

Kontakt / Contact Address: Lennuliiklusteeninduse Aktsiaselts Lennundusteabe osakond Kanali põik 3 Rae küla, Rae vald 10112 Harjumaa Estonia Tel: +372 625 8303 AFS: EETNYOYX Email: aip@eans.ee URL: aim.eans.ee	AIP Supplement for Estonia 	AIRAC AIP Lisa / AIP SUP 08/2022 Kehtiv alates Effective from 06 OCT 2022 kuni / to 03 NOV 2022 Avaldatud Published on 25 AUG 2022
--	--	---

Kuressaare lennuvälja (EEKE) ILS or LOC RWY 17 instrumentaallähenemisprotseduuri kehtestamine

Implementation of ILS or LOC RWY 17 Instrument Approach Procedures at Kuressaare Aerodrome (EEKE)

1 Üldine

See AIRAC AIP Lisa täiendab järgmist AIP-i osa: AD 2 EEKE.

AIP Lisa võimalikud muudatused avaldatakse NOTAM-iga.

See AIRAC AIP Lisa sisaldab instrumentaallähenemisprotseduuri EEKE ILS or LOC RWY 17 Kuressaare lennuvälja rajale 17.

1 General

This AIRAC AIP SUP supplements the following portion of the AIP: AD 2 EEKE.

Possible changes to AIP SUP shall be published by NOTAM.

This AIRAC AIP SUP contains instrument approach procedure EEKE ILS or LOC RWY 17 for Kuressaare aerodrome RWY 17.

2 Periood

6. oktoober 2022 00:00 UTC kuni 2. november 2022 23:59 UTC.

Peale antud ajavahemiku lõppu avaldatakse instrumentaallähenemisprotseduurid Eesti AIP-is.

2 Period

06 OCT 2022 00:00 UTC to 02 NOV 2022 23:59 UTC.

After the given period the instrument approach procedures shall be published in the Estonian AIP.

3 Lisad

3 Appendixes

Kaardi nimetus Name of chart	Leht Page
Instrumentaallähenemiskaart - ICAO - EEKE ILS or LOC RWY 17 <i>Instrument Approach Chart - ICAO - EEKE ILS or LOC RWY 17</i>	Lisa 1 <i>Appendix 1</i>
EEKE ILS or LOC rada 17 - kodeerimine <i>EEKE ILS or LOC RWY 17 - Coding</i>	Lisa 2 <i>Appendix 2</i>

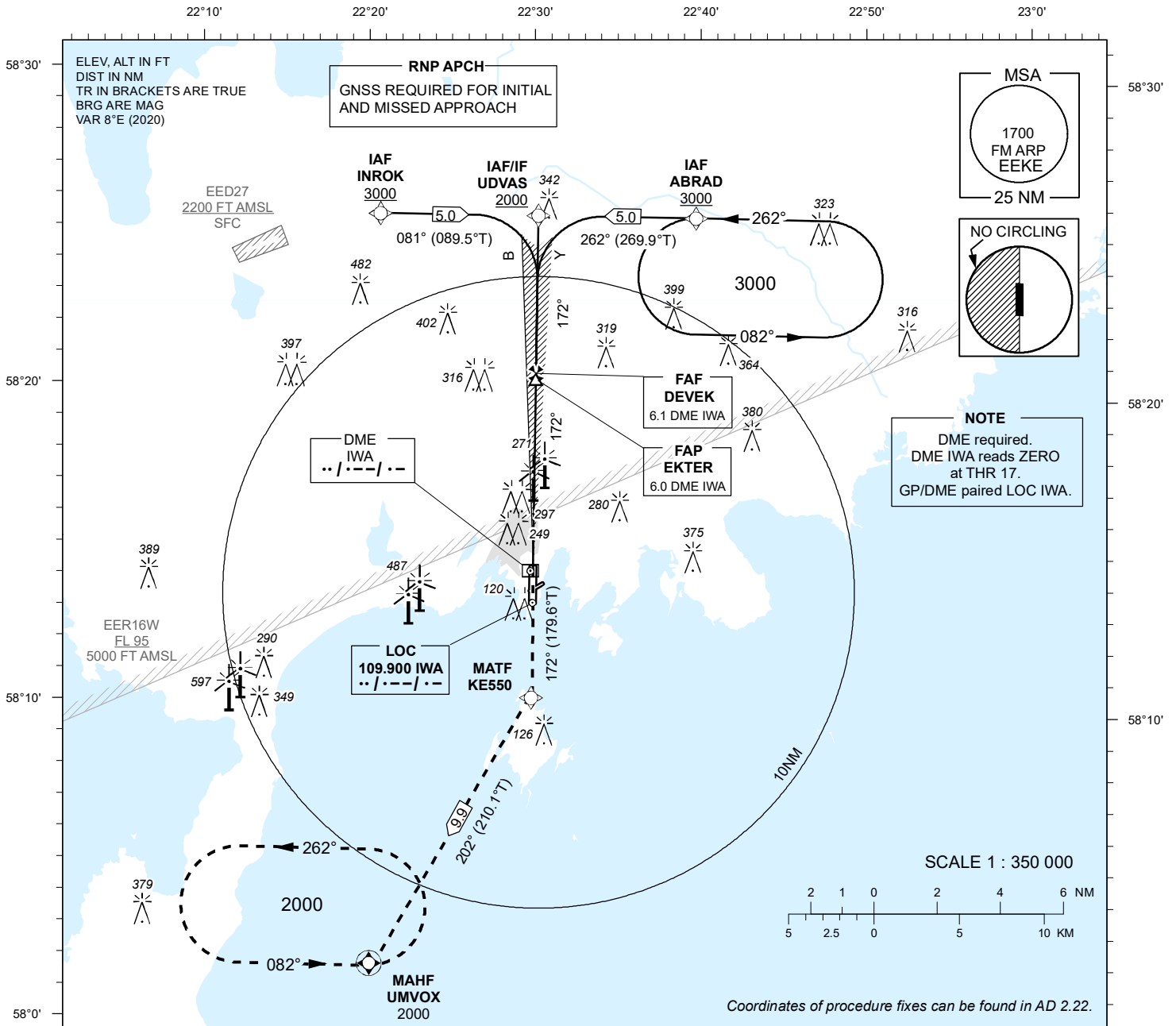
TÜHJAKS JÄETUD
PAGE INTENTIONALLY LEFT BLANK

INSTRUMENT APPROACH CHART - ICAO

AD ELEV 15 FT
HEIGHTS RELATED TO
THR RWY 17 ELEV 10 FT

INFORMATION 118.055

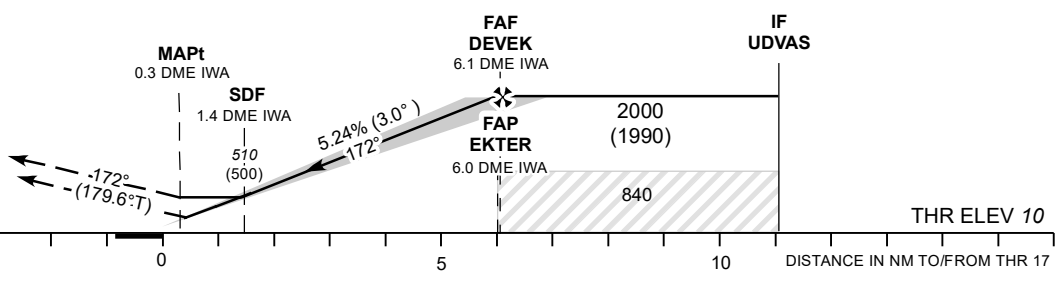
KURESSAARE (EEKE)
ILS or LOC RWY 17
(CAT A;B;C)



TRANSITION ALT 5000

DME IWA	DME 2	DME 3	DME 4	DME 5
ALT	700	1020	1340	1660
HGT	(690)	(1010)	(1330)	(1650)

MISSED APPROACH:
Climb on track 172° to MATF KE550. Turn right to UMVOX. Enter UMVOX holding at 2000 FT.



NO OFZ RWY 17

OCA (H)		A	B	C
Straight-in Approach	Cat I	176 (166)	188 (178)	196 (186)
	LOC ONLY	520 (510)		
	LOC ONLY +SDF	400 (390)		
Circling E of AD only		610 (600)	710 (700)	

Timing from table not authorized for defining the MAPt.

GS	KT	90	100	120	140	160
FAF-MAPt 5.75 NM	MIN:SEC	3:48	3:25	2:51	2:27	2:08
Rate of descent	FT / MIN	475	530	635	740	850

CHANGES: LOC only table and ILS FREQ added, editorial.

TÜHJAKS JÄETUD
PAGE INTENTIONALLY LEFT BLANK

EEKE ILS or LOC rada 17 - kodeerimine

EEKE ILS or LOC RWY 17 - Coding

PROC ID	Navigation specification	P/T	WPT name	Type	Flyover	Course ° T	Course ° MAG	Distance NM	Turn direction	Altitude ft	MAX IAS kt
ABRAD	RNP APCH	IF	ABRAD	IAF	-	-	-	-	-	+3000	-
		TF	UDVAS	IF	-	269.9	262	5.0	L	+2000	-
INROK	RNP APCH	IF	INROK	IAF	-	-	-	-	-	+3000	-
		TF	UDVAS	IF	-	089.5	081	5.0	R	+2000	-

EEKE ILS or LOC rada 17 - teekonnapunktide loetelu

EEKE ILS or LOC RWY 17 - Waypoint List

WPT name	Distance from Navaid	Coordinates
ABRAD	-	582536.7N 0223955.6E
FAF DEVEK	6.1 NM IWA	582036.0N 0223029.0E
FAP EKTER	6.0 NM IWA	582026.0N 0223028.0E
INROK	-	582533.6N 0222054.5E
KE550	-	581022.3N 0223037.1E
UDVAS	-	582536.0N 0223025.0E
UMVOX	-	580151.7N 0222119.9E

EEKE ILS or LOC rada 17 – ootetsoonid

EEKE ILS or LOC RWY 17 - Holdings

ID	INDB TR ° T	INBD ° MAG	Turn direction	MAX IAS (kt)	MNM HLDG LVL (ft)	Time (MIN)	Distance (NM)
ABRAD	269.7	262	Left	–	3000	1	–
UMVOX	089.5	082	Left	–	2000	1	–

TÜHJAKS JÄETUD
PAGE INTENTIONALLY LEFT BLANK