

**Kontakt / Contact**

Address: Lennuliiklusteeninduse  
Aktisiaselts  
Lennundusteabe  
osakond  
Kanali põik 3  
Rae küla, Rae vald  
10112 Harjumaa  
Estonia  
Tel: +372 671 0255  
Email: [aip@eans.ee](mailto:aip@eans.ee)  
URL: [aim.eans.ee](http://aim.eans.ee)

**AIP Supplement for Estonia**

**AIRAC**  
**AIP Lisa / AIP SUP**  
**06/2026**  
**Kehtiv alates**  
**Effective from**  
**14 MAY 2026**  
**kuni / to 01 DEC 2026**  
**Avaldatud**  
**Published on**  
**02 APR 2026**

**Tallinna lennuvälja (EETN) raja 08  
ajutine LOC 08 lähenemisprotseduur****Tallinn Aerodrome (EETN) Runway 08  
Temporary LOC 08 Approach Procedure****1 Üldine**

See AIP Lisa täiendab järgmist AIP-i osa: AD 2 EETN.

AIP Lisa võimalikud muudatused avaldatakse NOTAM-iga.

**1 General**

This AIP SUP supplements the following portion of the AIP:  
AD 2 EETN.

Possible changes to AIP SUP shall be published by NOTAM.

**2 Periood**

1. juuni 2026 kuni 30. november 2026.

**2 Period**

01 JUN 2026 to 30 NOV 2026.

**3 Eesmärk**

Seoses ehitustegevusega püstitatakse ajutine takistus:

**3 Purpose**

Temporary obstacle will be erected to construction works:

Type	Latitude	Longitude	Elevation (FT)	Marking	Lighting	Lighting colour	Lighting type	Remark
CRANE	592521.36N	0243831.45E	358	NO	YES	RED	FIXED	NIL

Lähenemisprotseduuri LOC 08 OCA (H) väärtus muutub  
ajutiselt 610 (480) ft peale.

Approach procedure LOC 08 OCA (H) value will be  
temporarily changed to 610 (480) ft.

**4 Lisa****4 Appendix**

Kaardi nimetus <i>Name of chart</i>	Leht <i>Page</i>
Instrumentaallähenemiskaart - ICAO - EETN ILS or LOC RWY 08 <i>Instrument Approach Chart - ICAO - EETN ILS or LOC RWY 08</i>	Lisa 1 <i>Appendix 1</i>

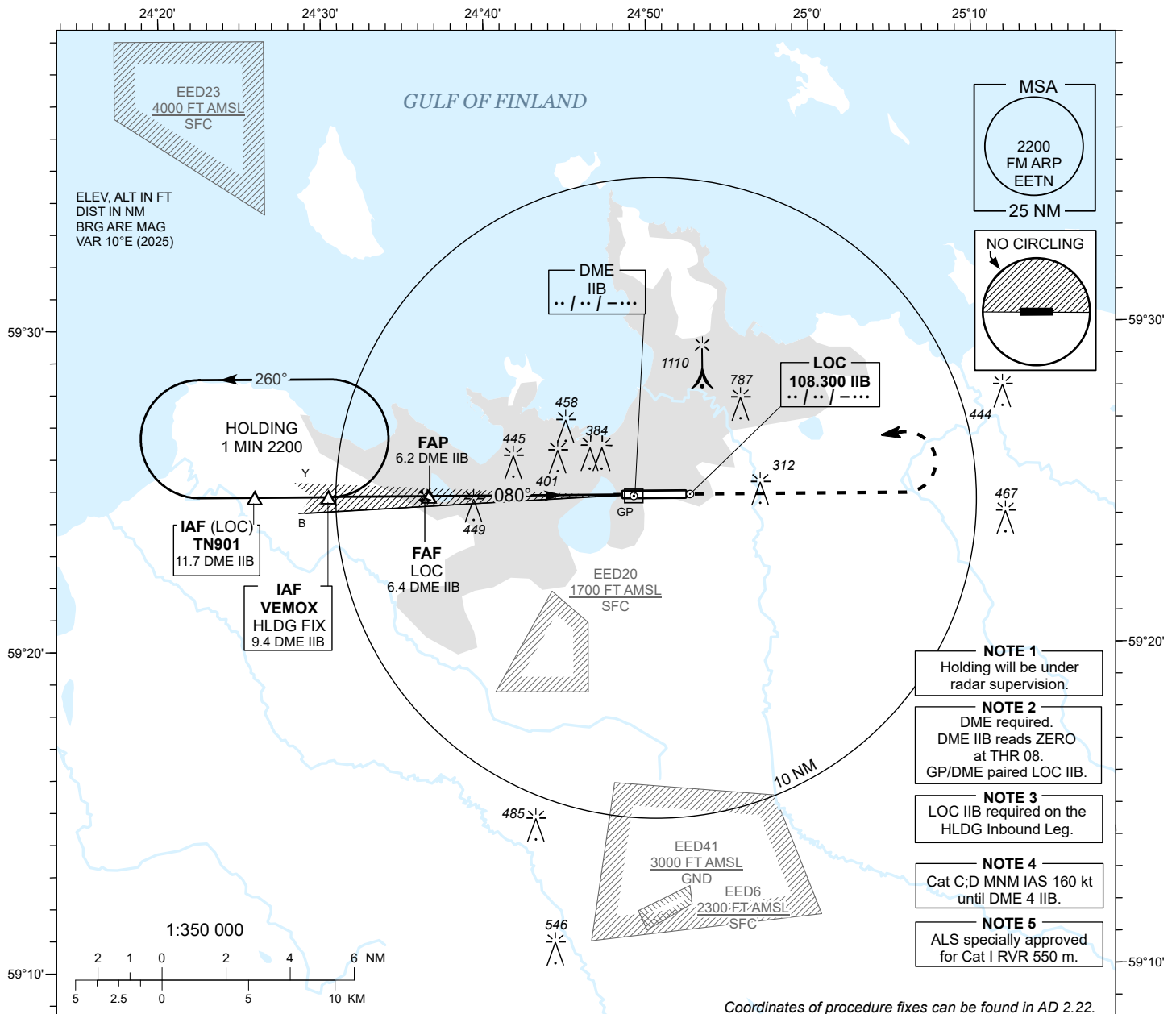
TÜHJAKS JÄETUD  
*PAGE INTENTIONALLY LEFT BLANK*

**INSTRUMENT  
APPROACH  
CHART - ICAO**

AD ELEV **135 FT**  
HEIGHTS RELATED TO  
THR RWY 08 ELEV **130 FT**

RADAR 127.905  
TOWER 135.905  
ATIS 124.880 / TEL: +372 625 8210

**LENNART MERI  
TALLINN (EETN)  
ILS or LOC RWY 08**



DME IIB	DME 6	DME 5	DME 4	DME 3	DME 2
ALT	2130	1800	1470	1150	820
HGT	(2000)	(1670)	(1340)	(1020)	(690)

Table for LOC ONLY approach

TRANSITION ALT 5000

**MISSED APPROACH**

Climb on track 080° to 2200 (2070) and contact radar CH 127.905.

**RADIO FAILURE**

After reaching 2200 (2070) turn left and join VEMOX holding. Start new approach after one full holding and land.

ILS RDH 54 FT  
THR ELEV 130

DISTANCE IN NM TO/FROM THR 08

OCA (H)	A	B	C	D
Straight-in Approach				
CAT I	300 (170)	312 (182)	321 (191)	331 (201)
CAT II	236 (106)	253 (123)	265 (135)	280 (150)
LOC ONLY	610 (480)			
Circling (S of AD only)	1360 (1230)		1510 (1380)	

GS	KT	90	100	120	140	160
FAF-MAPt 5.9 NM	MIN:SEC	3:56	3:32	2:57	2:32	2:13
Rate of descent	FT / MIN	475	530	635	740	850

Timing not authorized for defining the MAPt.

CHANGES: LOC ONLY OCA(H).

TÜHJAKS JÄETUD  
*PAGE INTENTIONALLY LEFT BLANK*