

STANDARD DEPARTURE CHART  
INSTRUMENT (SID) - ICAO

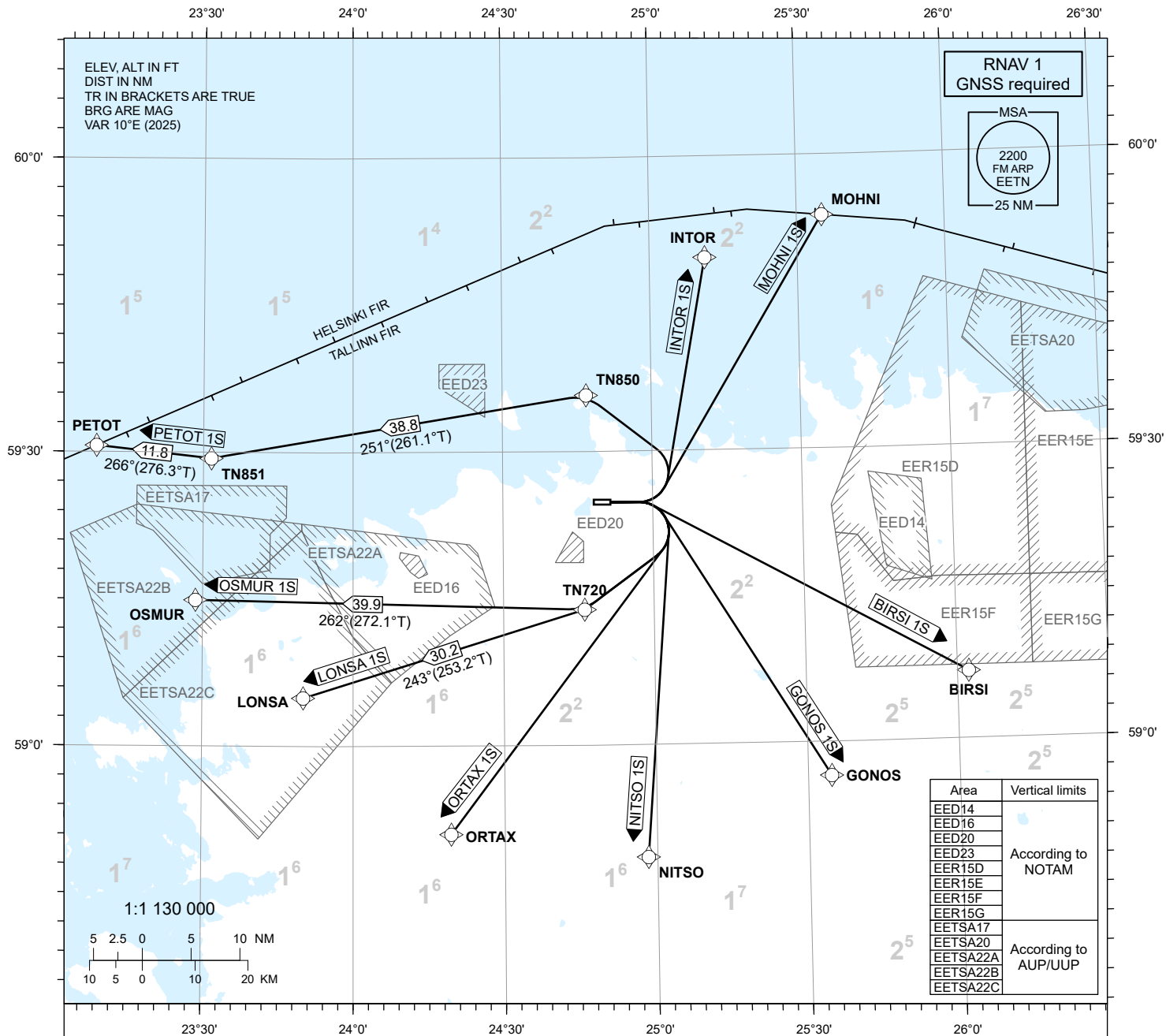
TRANSITION ALTITUDE  
5000

TOWER 135.905  
RADAR 127.905  
ATIS 124.880 / TEL: +372 625 8210

LENNART MERI  
TALLINN (EETN)

RNAV RWY 08

BIRSI 1S GONOS 1S INTOR 1S LONSA 1S MOHNI 1S  
NITSO 1S ORTAX 1S OSMUR 1S PETOT 1S



NAV SPECIFICATION

RNAV 1 CAPABILITY REQUIRED. OTHERWISE INFORM ATC.

EN-ROUTE CLEARANCE

CONTACT TALLINN TWR ON CH 135.905 NOT EARLIER THAN 10 MINUTES PRIOR TO EOBT OR ESTIMATED ENGINE START-UP, ADVISE CALL SIGN, STAND/GATE NUMBER AND IF NOT ABLE TO FOLLOW RNAV SID.

PROC DESCRIPTION AND RNAV-UNABLE PROC INSTRUCTION: REF AD 2.22.

SQUAWK

SQUAWK THE ASSIGNED SSR-CODE IMMEDIATELY PRIOR PUSH-BACK OR TAXI.

INITIAL CLIMB

CLIMB TO 4000 FT MSL OR ASSIGNED ALTITUDE IF LOWER. CLIMB TO A HIGHER LEVEL ONLY WHEN CLEARED BY ATC.  
MNM CLIMB GRADIENT 6,6% (400 FT/NM) UP TO 4000 FT MSL. AIRCRAFT UNABLE TO COMPLY SHALL INFORM ATC.

RADIO CONTACT

AFTER TAKE-OFF CONTACT TALLINN RADAR 127.905.

CHANGES: EER16E and EER16W removed.