

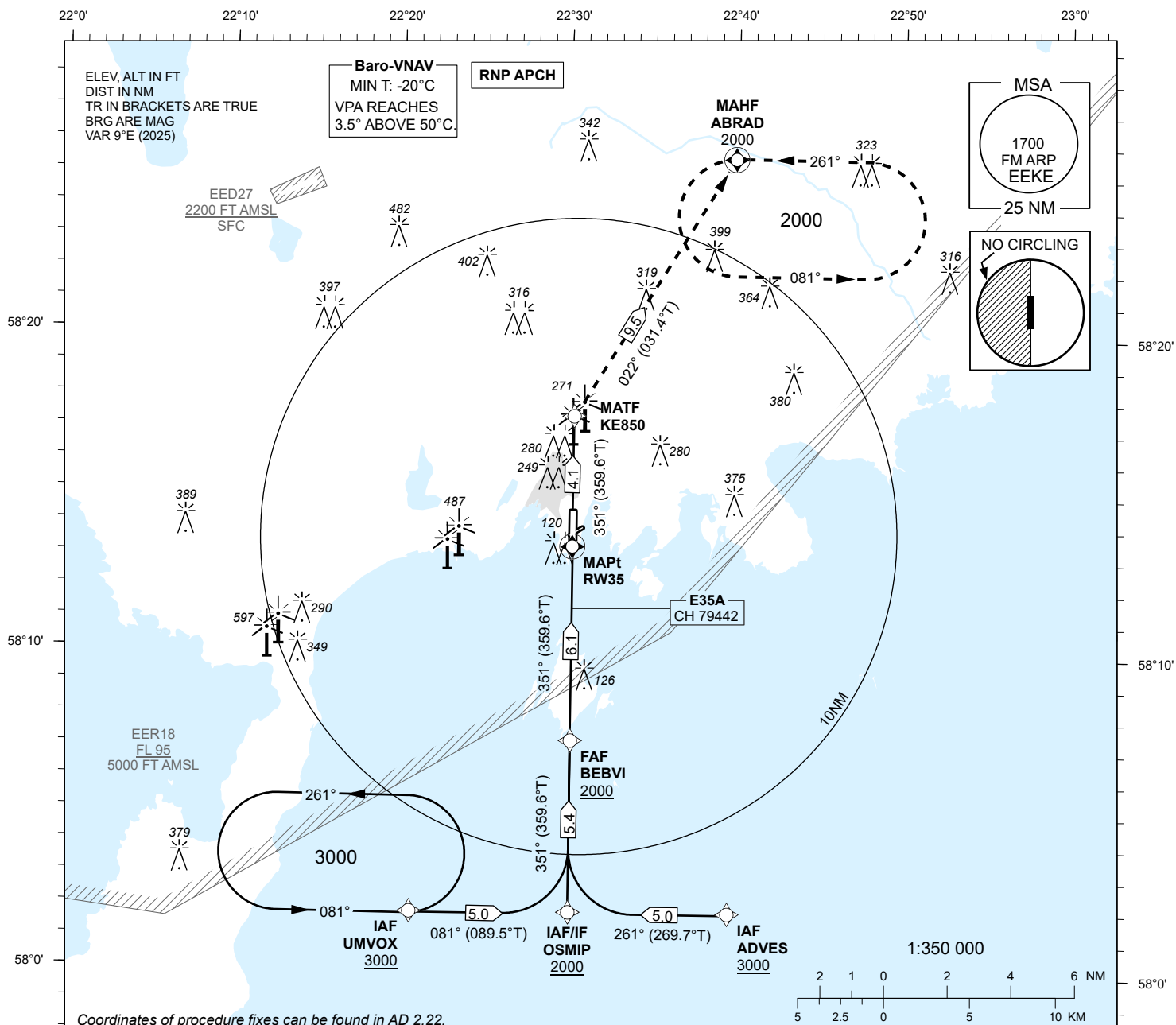
# INSTRUMENT APPROACH CHART - ICAO

SBAS  
CH 79442  
E35A

AD ELEV 15 FT  
HEIGHTS RELATED TO  
THR RWY 35 ELEV 8 FT

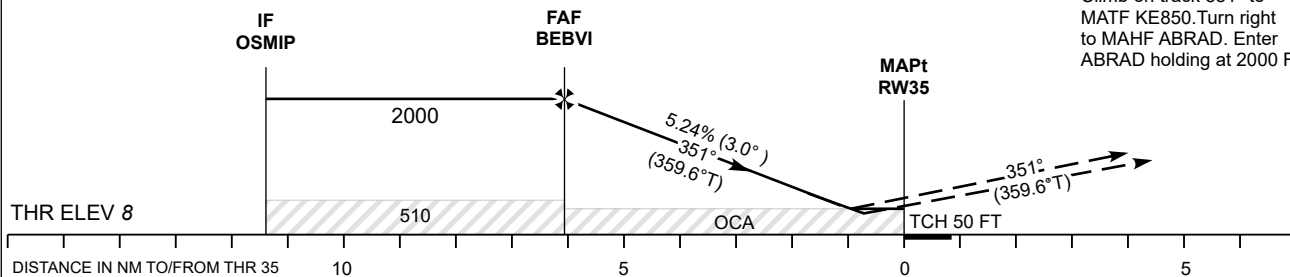
INFORMATION 118.055

**KURESSAARE (EEKE)**  
**RNP RWY 35**  
(CAT A;B;C)



Coordinates of procedure fixes can be found in AD 2.22.

TRANSITION ALT 5000



**MISSED APPROACH:**  
Climb on track 351° to  
MATF KE850. Turn right  
to MAHF ABRAD. Enter  
ABRAD holding at 2000 FT.

Decision heights (DH) below 250 FT shall not be used due to APV  
approach operation Type A limitations.

Decision heights (DH) below 250' F1 shall not be used due to APV approach operation Type A limitations.				Final Approach DIST	5.0 NM	4.0 NM	3.0 NM	2.0 NM	1.0 NM (LPV)
OCA (H)	A	B	C	ALT	1650	1340	1020	700	390
LPV	249 (241)	262 (254)	270 (262)	HGT	1640	1330	1010	690	380
LNAV/VNAV	250 (240)	270 (260)			KT	90	100	120	140 160
LNAV	380 (370)			FAF-MAPt 6.1 NM	MIN:SEC	4:04	3:40	3:03	2:37 2:17
Circling E of AD only	610 (600)		710 (700)	Rate of descent	FT / MIN	475	530	635	740 850