

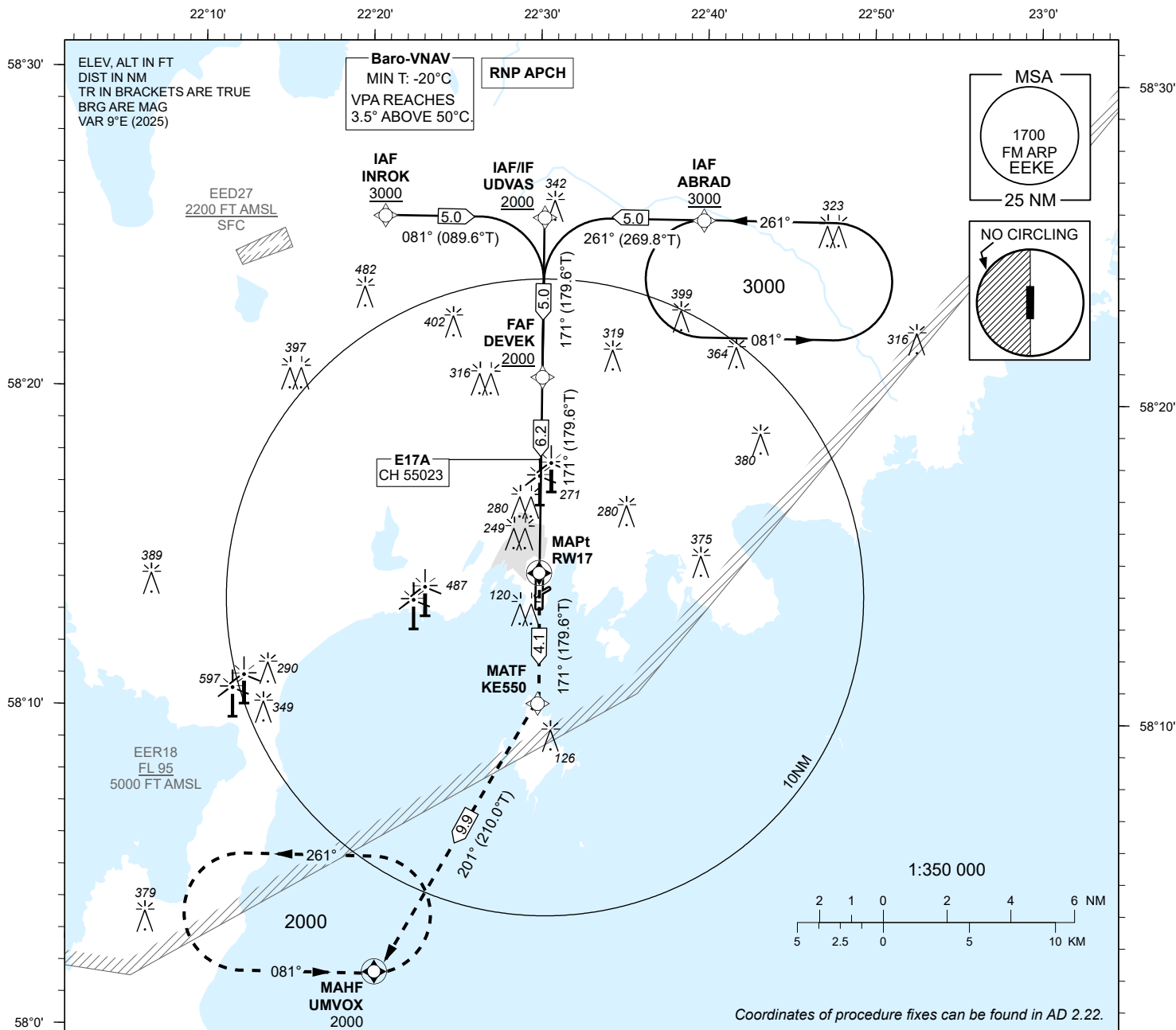
INSTRUMENT APPROACH CHART - ICAO

SBAS
CH 55023
E17A

AD ELEV **15 FT**
HEIGHTS RELATED TO
THR RWY 17 ELEV **10 FT**

INFORMATION 118.055

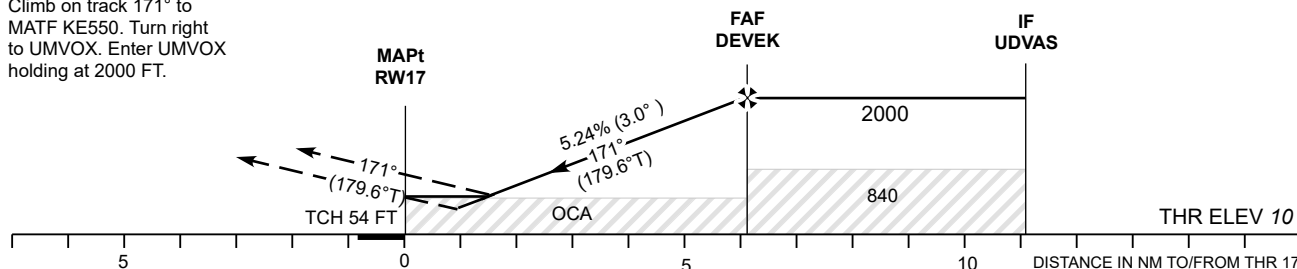
KURESSAARE (EEKE)
RNP RWY 17
(CAT A;B;C)



MISSED APPROACH:

Climb on track 171° to
MATF KE550. Turn right
to UMVOX. Enter UMVOX
holding at 2000 FT.

TRANSITION ALT 5000



Decision heights (DH) below 250 FT shall not be used due to APV
approach operation Type A limitations.

Decision heights (DH) below 250 FT shall not be used due to APV approach operation Type A limitations.				Final Approach DIST	5.0 NM	4.0 NM	3.0 NM	2.0 NM	1.0 NM (LPV)
OCA (H)	A	B	C	ALT	1660	1340	1030	710	400
LPV	242 (232)	255 (245)	263 (253)	HGT	1650	1330	1020	700	390
LNAV/VNAV	410 (400)	430 (420)			KT	90	100	120	140 160
LNAV	530 (520)			FAF-MAPt 6.2 NM	MIN:SEC	4:08	3:43	3:06	2:39 2:20
Circling E of AD only	610 (600)		710 (700)	Rate of descent	FT / MIN	475	530	635	740 850

CHANGES: EER16W removed.