

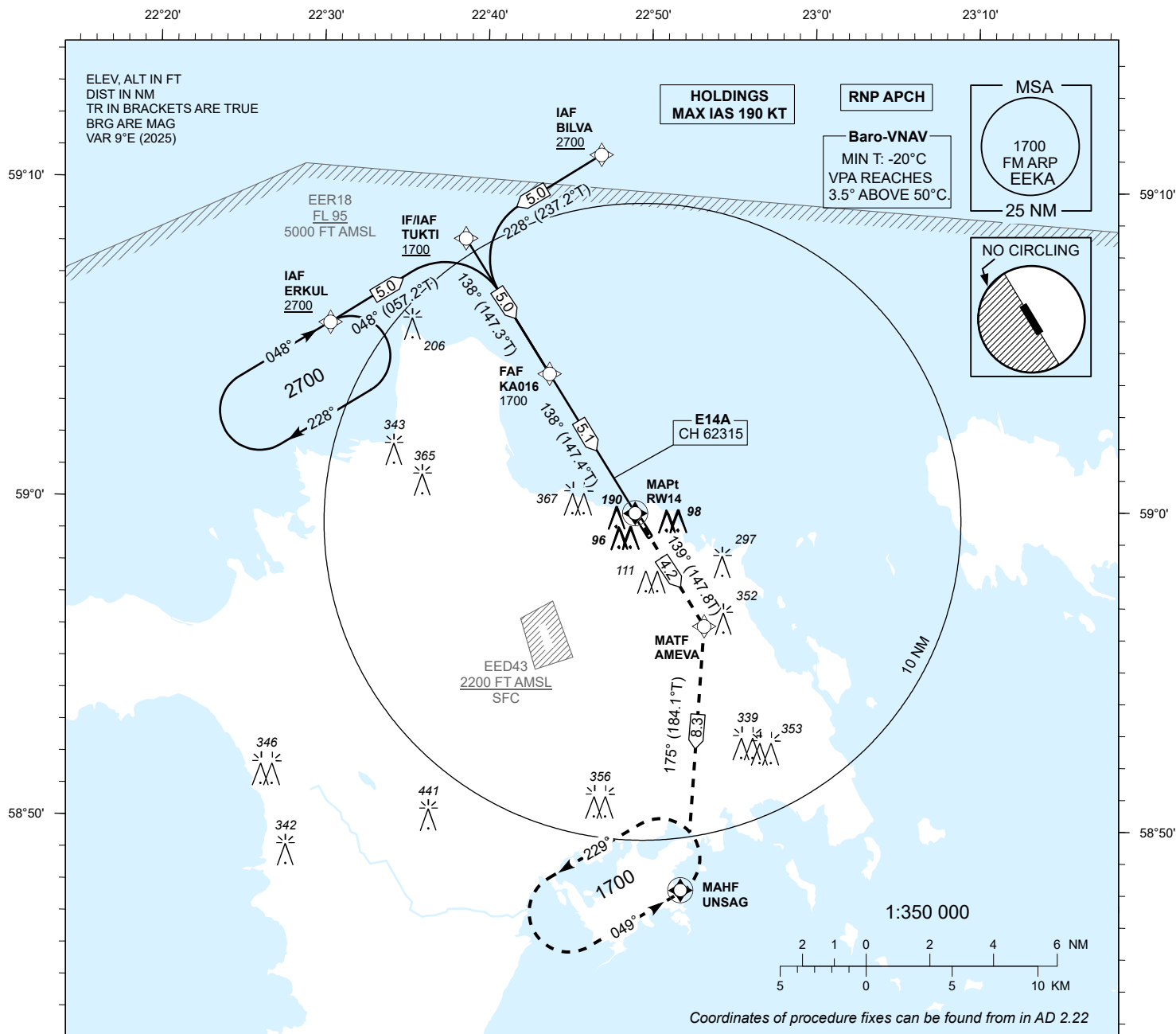
# INSTRUMENT APPROACH CHART - ICAO

SBAS  
CH 62315  
E14A

AD ELEV 18 FT  
HEIGHTS RELATED TO  
THR RWY 14 ELEV 12 FT

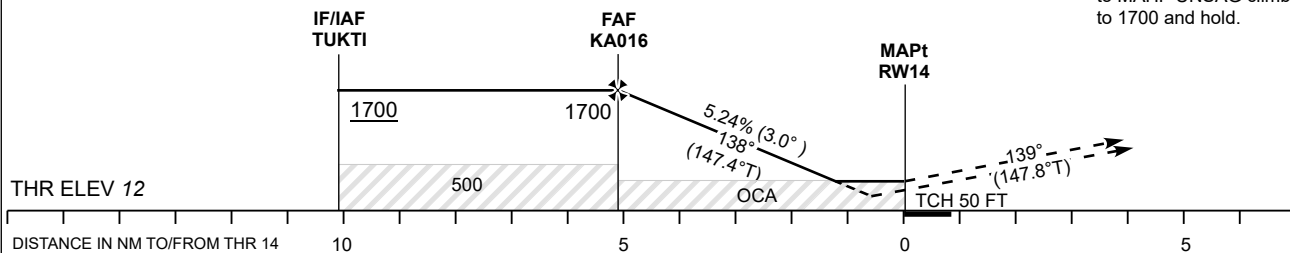
INFORMATION 133.405

**KÄRDLA (EEKA)**  
**RNP RWY 14**  
(CAT A;B;C)



TRANSITION ALT 5000

**MISSED APPROACH:**  
Climb on track 139° to  
MATF AMEVA. Turn right  
to MAHF UNSAG climbing  
to 1700 and hold.



Decision heights (DH) below 250 FT shall not be used due to APV  
approach operation Type A limitations.

				Final Approach DIST	5.0 NM	4.0 NM	3.0 NM	2.0 NM	1.0 NM
OCA (H)	A	B	C	ALT	1660	1340	1020	700	380
LPV	228 (216)	241 (229)	249 (237)	HGT	1650	1330	1010	690	370
LNAV/VNAV	253 (241)	258 (246)	262 (250)		KT	90	100	120	140
LNAV		340 (320)		FAF-MAPt 5.1 NM	MIN:SEC	3:26	3:06	2:35	2:13
Circling E of AD only	420 (410)	510 (500)	750 (740)	Rate of descent	FT / MIN	480	535	640	745

CHANGES: EER16W removed.