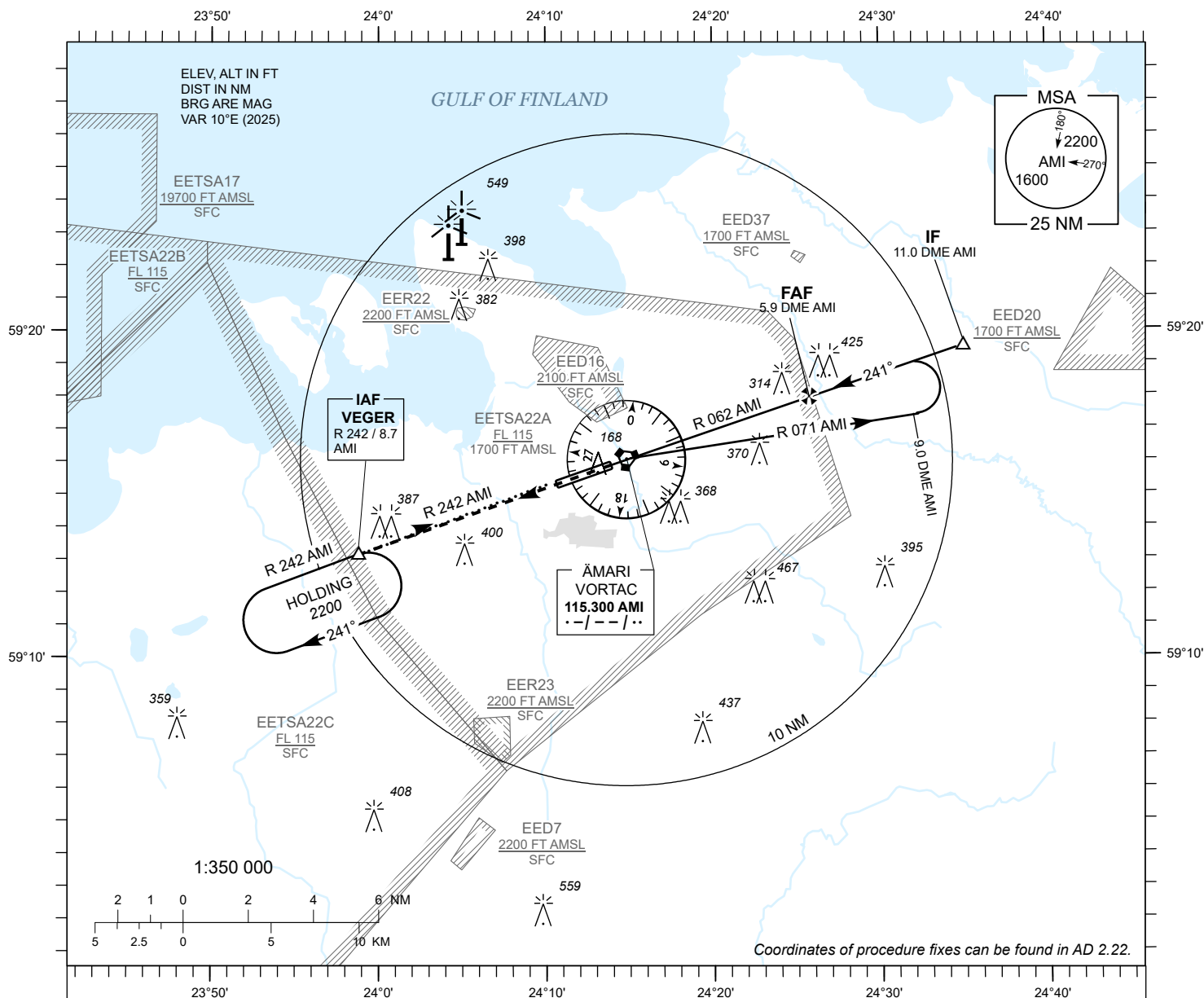


INSTRUMENT  
APPROACH  
CHART - ICAO

AD ELEV 70 FT  
HEIGHTS RELATED TO  
THR RWY 24 ELEV 60 FT

TALLINN RADAR 127.905  
ÄMARI TOWER 122.100 / 257.800

ÄMARI (EEEE)  
MILITARY AERODROME  
VORTAC RWY 24  
(CAT A;B)



**MISSED APPROACH**

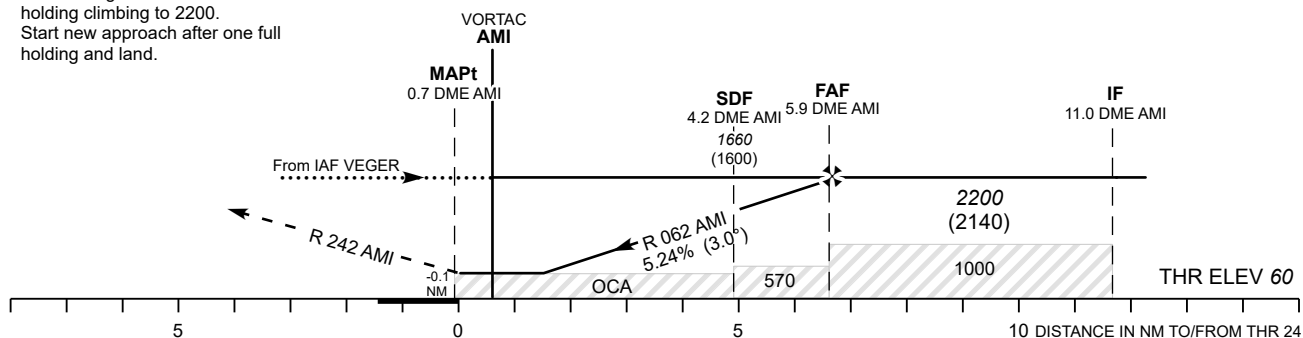
Climb on R 242 AMI to 2200 and expect radar vectors. Contact TALLINN RADAR CH 127.905.

**COMMUNICATION FAILURE**

Climb straight ahead. Join VEGER holding climbing to 2200. Start new approach after one full holding and land.

TRANSITION ALT 5000

TACAN AMI	2 NM	3 NM	4 NM	5 NM
ALT	970	1290	1540	1920
HGT	(910)	(1230)	(1480)	(1860)



OCA (H)	A	B	Timing not authorized for defining the MAPt.						
Straight - in Approach	570 (510)			KT	80	90	100	120	140
Straight - in Approach + SDF	420 (360)		FAF- MAPt 6.6 NM	MIN : SEC	4:57	4:24	3:57	3:18	2:49
Circling	640 (570)	660 (590)	Rate of descent	FT / MIN	425	480	535	640	745