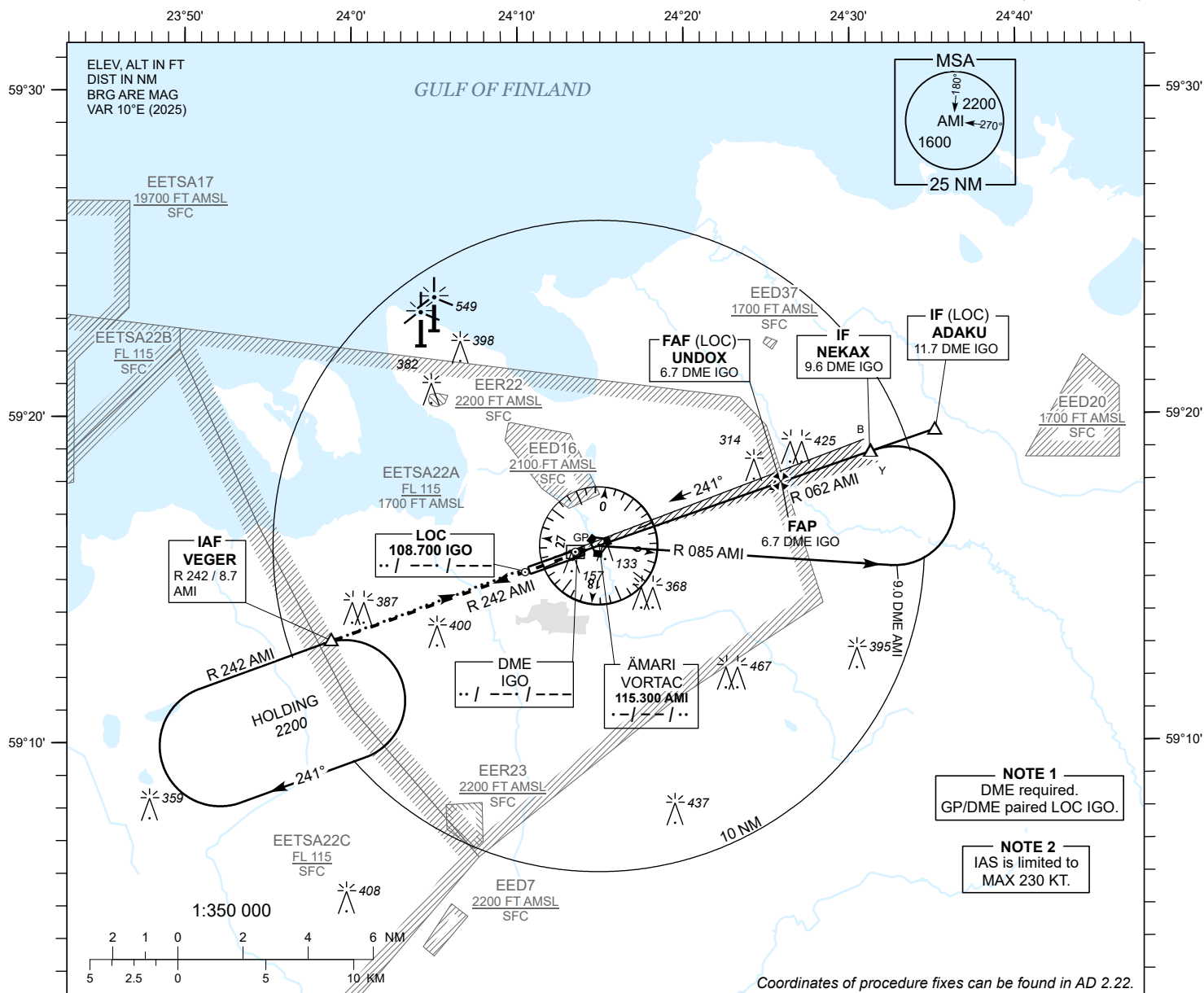


**INSTRUMENT  
APPROACH  
CHART - ICAO**

AD ELEV 70 FT  
HEIGHTS RELATED TO  
THR RWY 24 ELEV 60 FT

TALLINN RADAR 127.905  
ÄMARI TOWER 122.100 / 257.800

**ÄMARI (EEEE)  
MILITARY AERODROME**  
ILS or LOC RWY 24  
(CAT C;D;E)



**MISSED APPROACH**

Climb on track 241 to 2200 and expect radar vectors. Contact TALLINN RADAR CH 127.905.

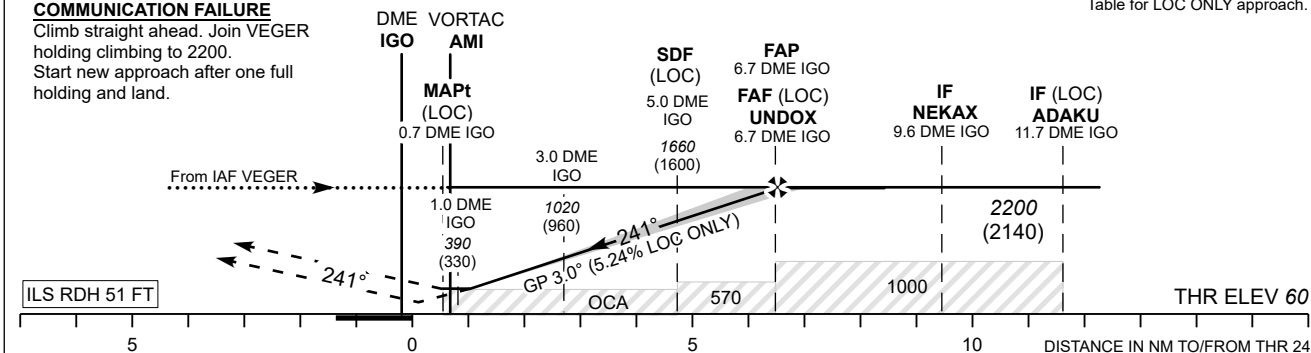
**COMMUNICATION FAILURE**

Climb straight ahead. Join VEGER holding climbing to 2200. Start new approach after one full holding and land.

TRANSITION ALT 5000

DME IGO	1 NM	2 NM	3 NM	4 NM	5 NM	6 NM
ALT	390	700	1020	1340	1660	1980
HGT	(330)	(640)	(960)	(1280)	(1600)	(1920)

Table for LOC ONLY approach.



NO OFZ RWY 24				DISTANCE IN NM FOR COM THR 24									
OCA (H)		C	D	E	Timing not authorized for defining the MAPt.								
Straight-in Approach	CAT I	318 (258)	328 (268)	347 (287)	LOC ONLY	KT	100	120	140	160	180	200	220
	LOC ONLY	570 (510)			FAF- MAPt 6.0 NM	MIN : SEC	3:36	3:00	2:34	2:15	2:00	1:48	1:38
	LOC ONLY + SDF	400 (340)											
Circling		800 (730)		970 (900)	Rate of descent	FT / MIN	535	640	745	850	960	1065	1170