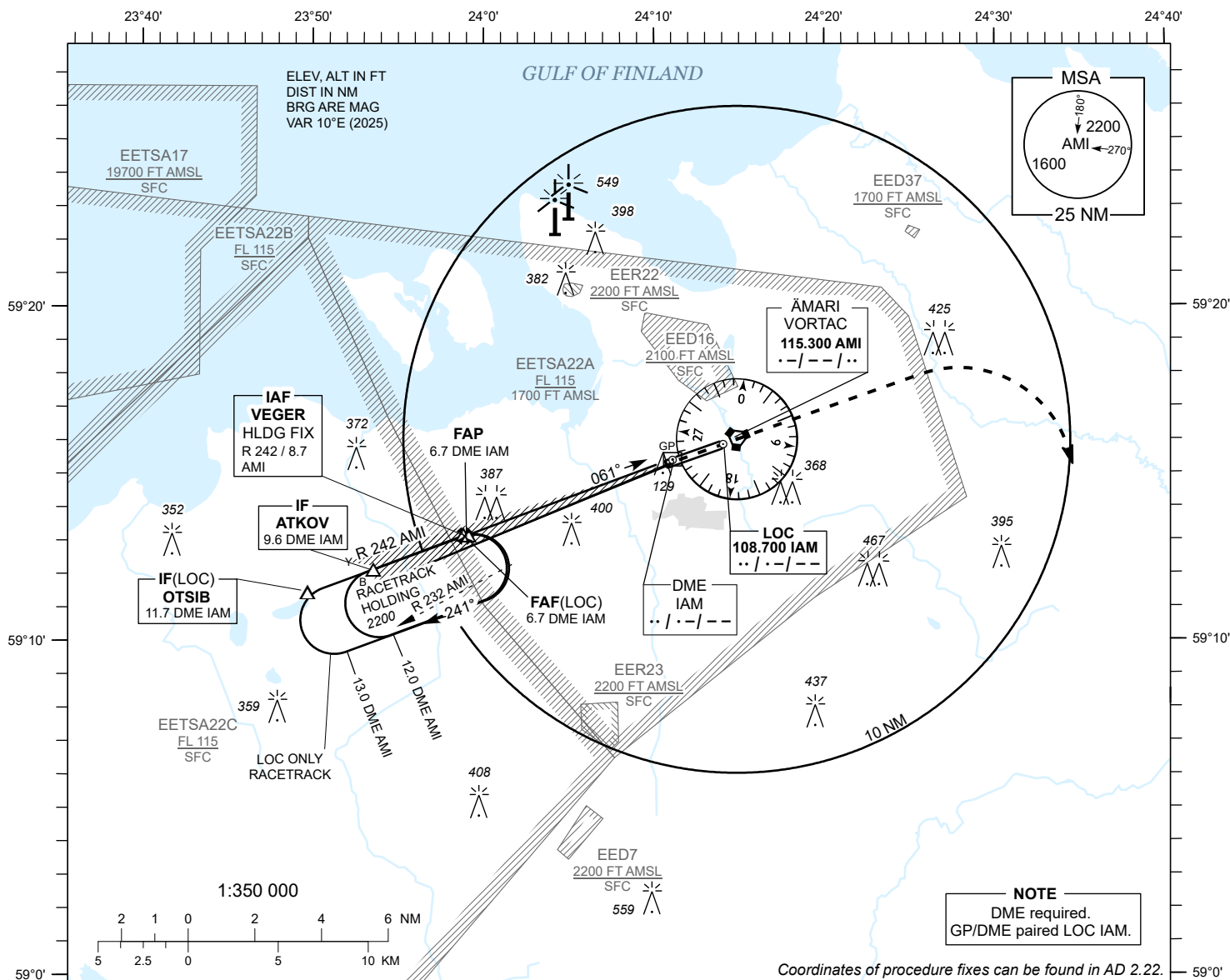


INSTRUMENT  
APPROACH  
CHART - ICAO

AD ELEV 70 FT  
HEIGHTS RELATED TO  
THR RWY 06 ELEV 66 FT

TALLINN RADAR 127.905  
ÄMARI TOWER 122.100 / 257.800

ÄMARI (EEEE)  
MILITARY AERODROME  
ILS or LOC RWY 06  
(CAT A;B)



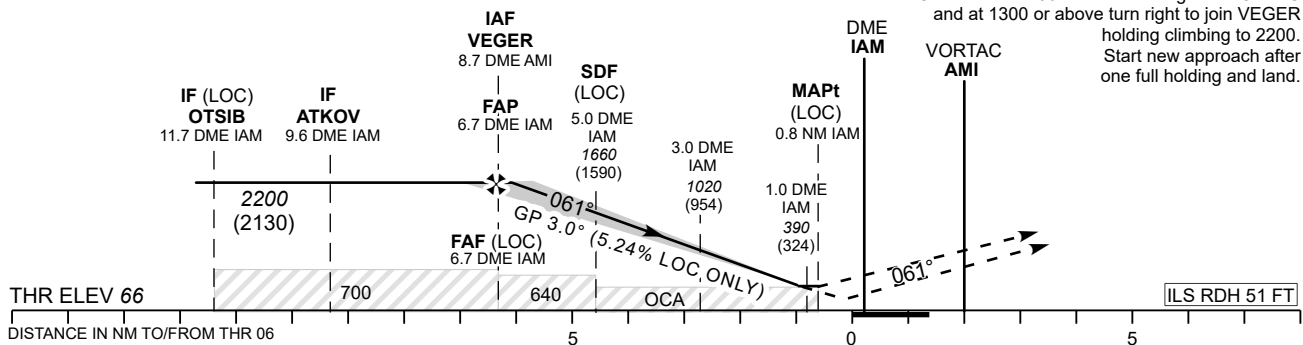
| DME IAM | 6 NM   | 5 NM   | 4 NM   | 3 NM  | 2 NM  | 1 NM  |
|---------|--------|--------|--------|-------|-------|-------|
| ALT     | 1980   | 1660   | 1340   | 1020  | 700   | 390   |
| HGT     | (1910) | (1590) | (1270) | (950) | (630) | (320) |

Table for LOC ONLY approach.

TRANSITION ALT 5000

**MISSED APPROACH**  
Climb on track 061. After crossing AMI VORTAC and at 1300 or above turn right heading 160 climbing to 2200. Contact TALLINN RADAR CH 127.905.

**COMMUNICATION FAILURE**  
Climb on track 061. After crossing AMI VORTAC and at 1300 or above turn right to join VEGER holding climbing to 2200. Start new approach after one full holding and land.



| NO OFZ RWY 06        |                |           |           |  |           |      |      |      |      |      |  |
|----------------------|----------------|-----------|-----------|--|-----------|------|------|------|------|------|--|
| OCA (H)              |                | A         | B         | Timing not authorized for defining the MAPt. |           |      |      |      |      |      |  |
| Straight-in Approach | CAT I          | 275 (209) | 287 (221) | LOC ONLY                                     | KT        | 80   | 90   | 100  | 120  | 140  |  |
|                      | LOC ONLY       | 640 (570) |           | FAF- MAPt 5.9 NM                             | MIN : SEC | 4:30 | 4:00 | 3:36 | 3:00 | 2:34 |  |
|                      | LOC ONLY + SDF | 410 (340) |           |  |           |      |      |      |      |      |  |
| Circling             |                | 640 (570) | 660 (590) | Rate of descent                              | FT / MIN  | 425  | 480  | 535  | 640  | 745  |  |