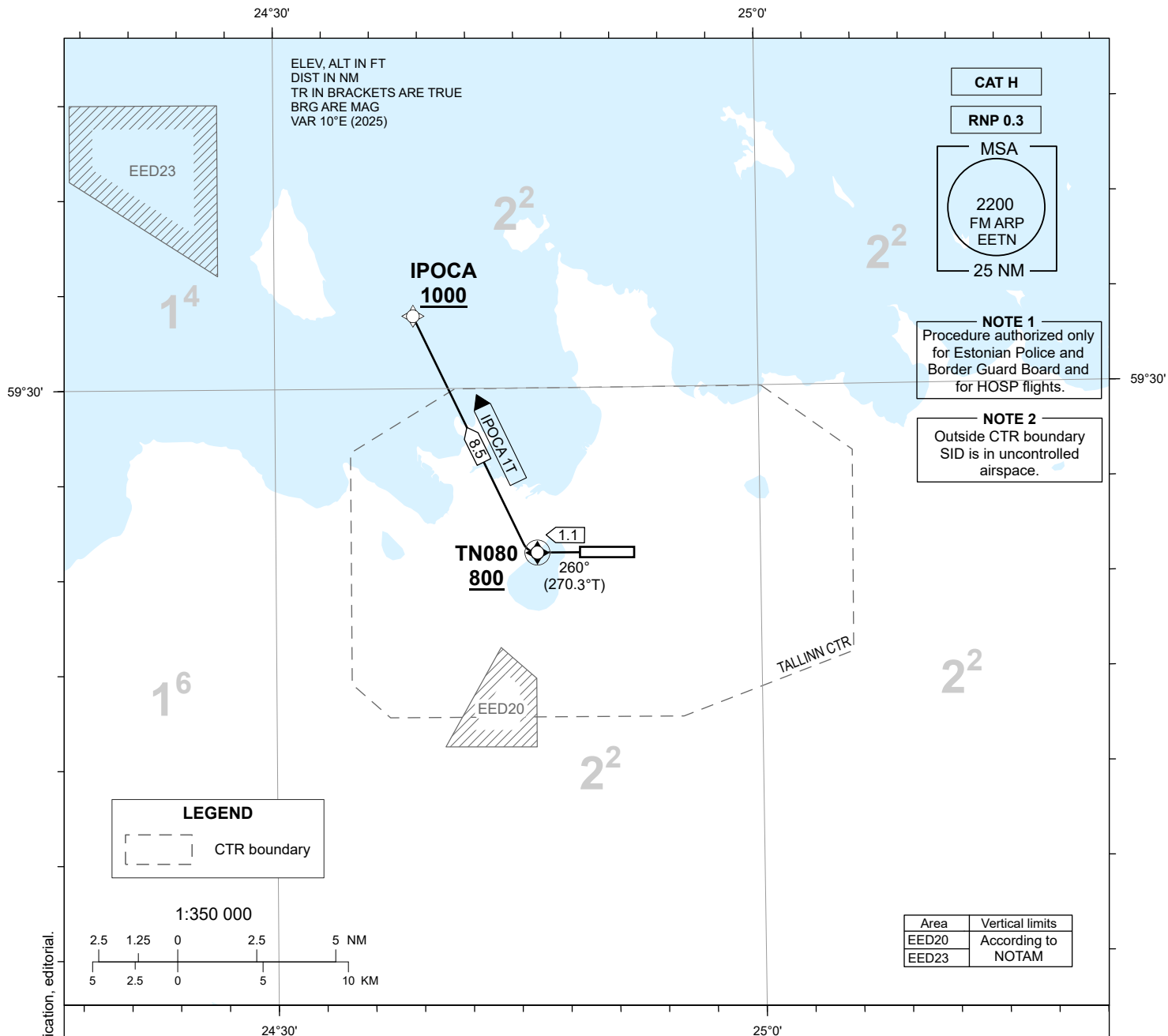


STANDARD DEPARTURE CHART  
INSTRUMENT (SID) - ICAO

TRANSITION ALTITUDE  
5000

TOWER 135.905  
RADAR 127.905  
ATIS 124.880 / TEL: +372 625 8210

LENNART MERI  
TALLINN (EETN)  
RNP RWY 26  
IPOCA 1T



CHANGES: Magnetic variation and course, chart identification, editorial.

**NAV SPECIFICATION**  
RNP 0.3 CAPABILITY REQUIRED. OTHERWISE INFORM ATC.

**EN-ROUTE CLEARANCE**  
CONTACT TALLINN TWR ON CH 135.905 NOT EARLIER THAN 10 MINUTES PRIOR TO EOBT OR ESTIMATED ENGINE START-UP, ADVISE CALL SIGN, STAND/GATE NUMBER AND IF NOT ABLE TO FOLLOW RNP SID.

CODING TABLES AND WPT LIST: REF AD 2.22.

**SQUAWK**  
SQUAWK THE ASSIGNED SSR-CODE IMMEDIATELY PRIOR PUSH-BACK OR TAXI.

**INITIAL CLIMB**  
MNM CLIMB GRADIENT 9,8% (600 FT/NM) UP TO 800 FT MSL. AIRCRAFT UNABLE TO COMPLY SHALL INFORM ATC.

**RADIO CONTACT**  
AFTER TAKE-OFF REMAIN TALLINN TOWER 135.905.