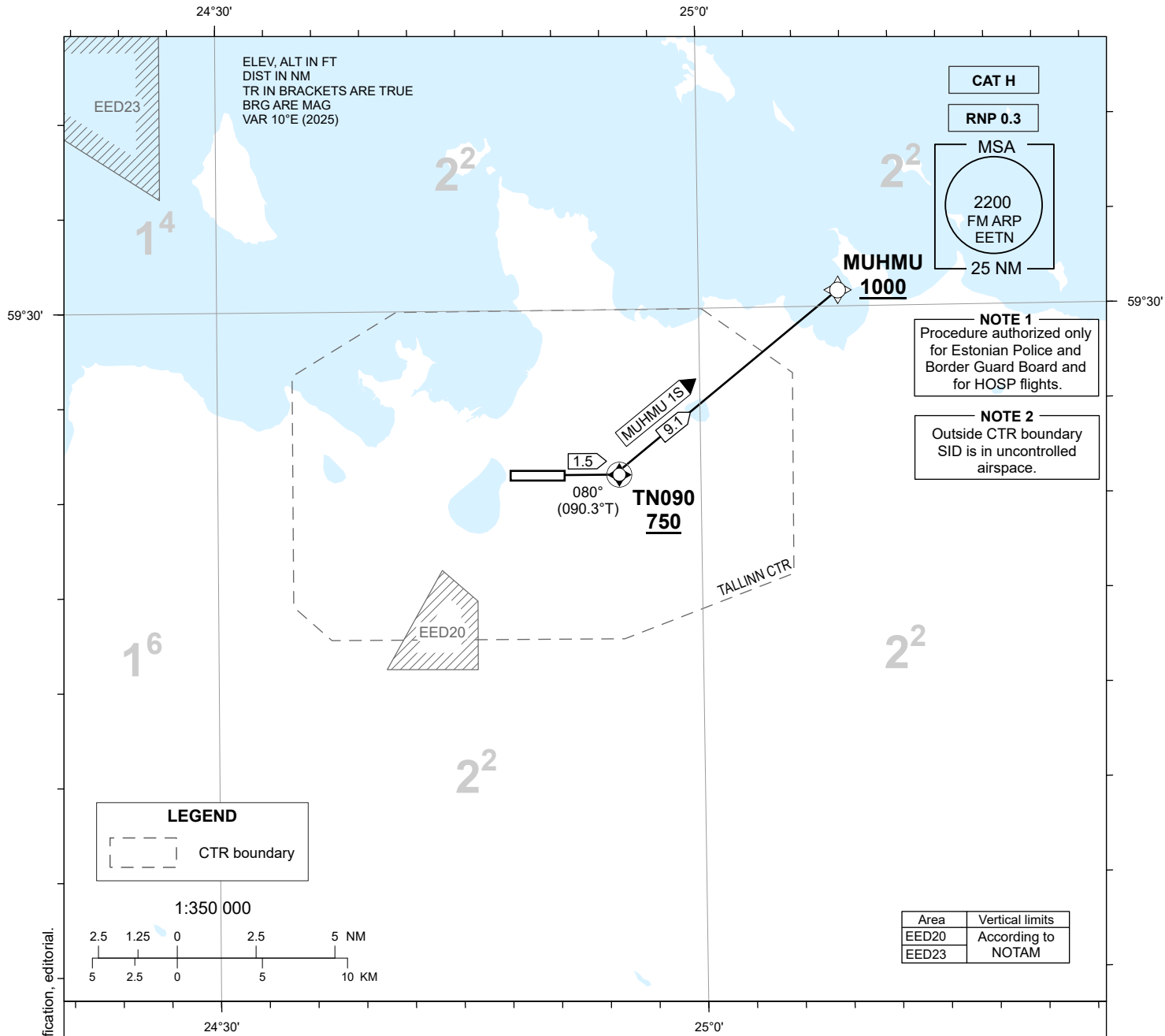


STANDARD DEPARTURE CHART
INSTRUMENT (SID) - ICAO

TRANSITION ALTITUDE
5000

TOWER 135.905
RADAR 127.905
ATIS 124.880 / TEL: +372 625 8210

LENNART MERI
TALLINN (EETN)
RNP RWY 08
MUHMU 1S



NAV SPECIFICATION
RNP 0.3 CAPABILITY REQUIRED. OTHERWISE INFORM ATC.

EN-ROUTE CLEARANCE
CONTACT TALLINN TWR ON CH 135.905 NOT EARLIER THAN 10 MINUTES PRIOR TO EOBT OR ESTIMATED ENGINE START-UP, ADVISE CALL SIGN, STAND/GATE NUMBER AND IF NOT ABLE TO FOLLOW RNP SID.

CODING TABLES AND WPT LIST: REF AD 2.22.

SQUAWK
SQUAWK THE ASSIGNED SSR-CODE IMMEDIATELY PRIOR PUSH-BACK OR TAXI.

INITIAL CLIMB
MNM CLIMB GRADIENT 6,6% (400 FT/NM) UP TO 750 FT MSL. AIRCRAFT UNABLE TO COMPLY SHALL INFORM ATC.

RADIO CONTACT
AFTER TAKE-OFF REMAIN TALLINN TOWER 135.905.

CHANGES: Magnetic variation and course, chart identification, editorial.