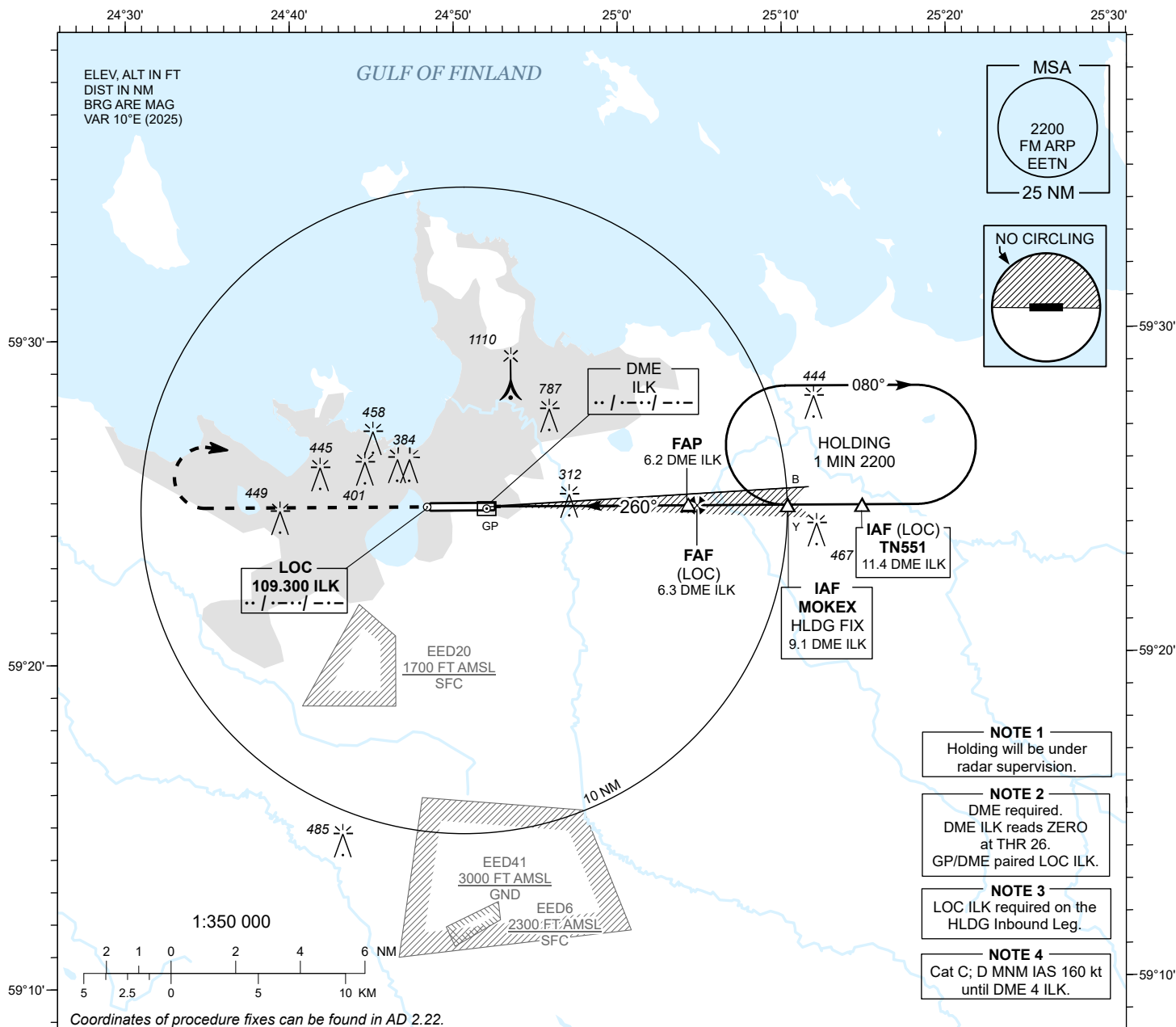


**INSTRUMENT  
APPROACH  
CHART - ICAO**

AD ELEV **135 FT**  
HEIGHTS RELATED TO  
THR RWY 26 ELEV **135 FT**

RADAR 127.905  
TOWER 135.905  
ATIS 124.880 / TEL: +372 625 8210

**LENNART MERI  
TALLINN (EETN)  
ILS or LOC RWY 26**



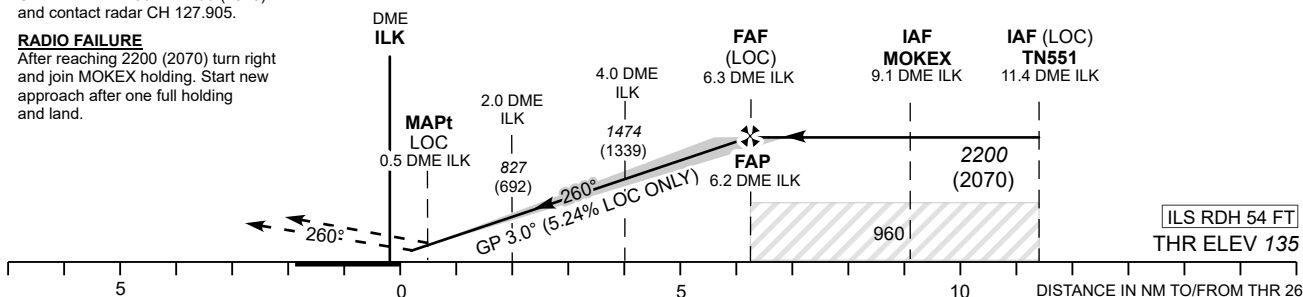
TRANSITION ALT 5000

**MISSED APPROACH**  
Climb on track 260° to 2200 (2070) and contact radar CH 127.905.

**RADIO FAILURE**  
After reaching 2200 (2070) turn right and join MOKEX holding. Start new approach after one full holding and land.

DME ILK	DME 2	DME 3	DME 4	DME 5	DME 6
ALT	830	1160	1480	1810	2140
HGT	(690)	(1020)	(1340)	(1670)	(2000)

Table for LOC ONLY approach



OCA (H)		A	B	C	D								
Straight-in Approach	CAT I	308 (173)	320 (185)	328 (193)	338 (203)	Timing not authorized for defining the MAPt.							
	CAT II	200 (65)	218 (83)	246 (111)	260 (125)	GS	KT	90	100	120	140	160	
	LOC ONLY	560 (430)				FAF-MAPt 5.8 NM	MIN:SEC	3:52	3:29	2:54	2:29	2:11	
Circling (S of AD only)		1360 (1230)		1510 (1380)		Rate of descent	FT / MIN	475	530	635	740	850	