

**INSTRUMENT
APPROACH
CHART - ICAO**

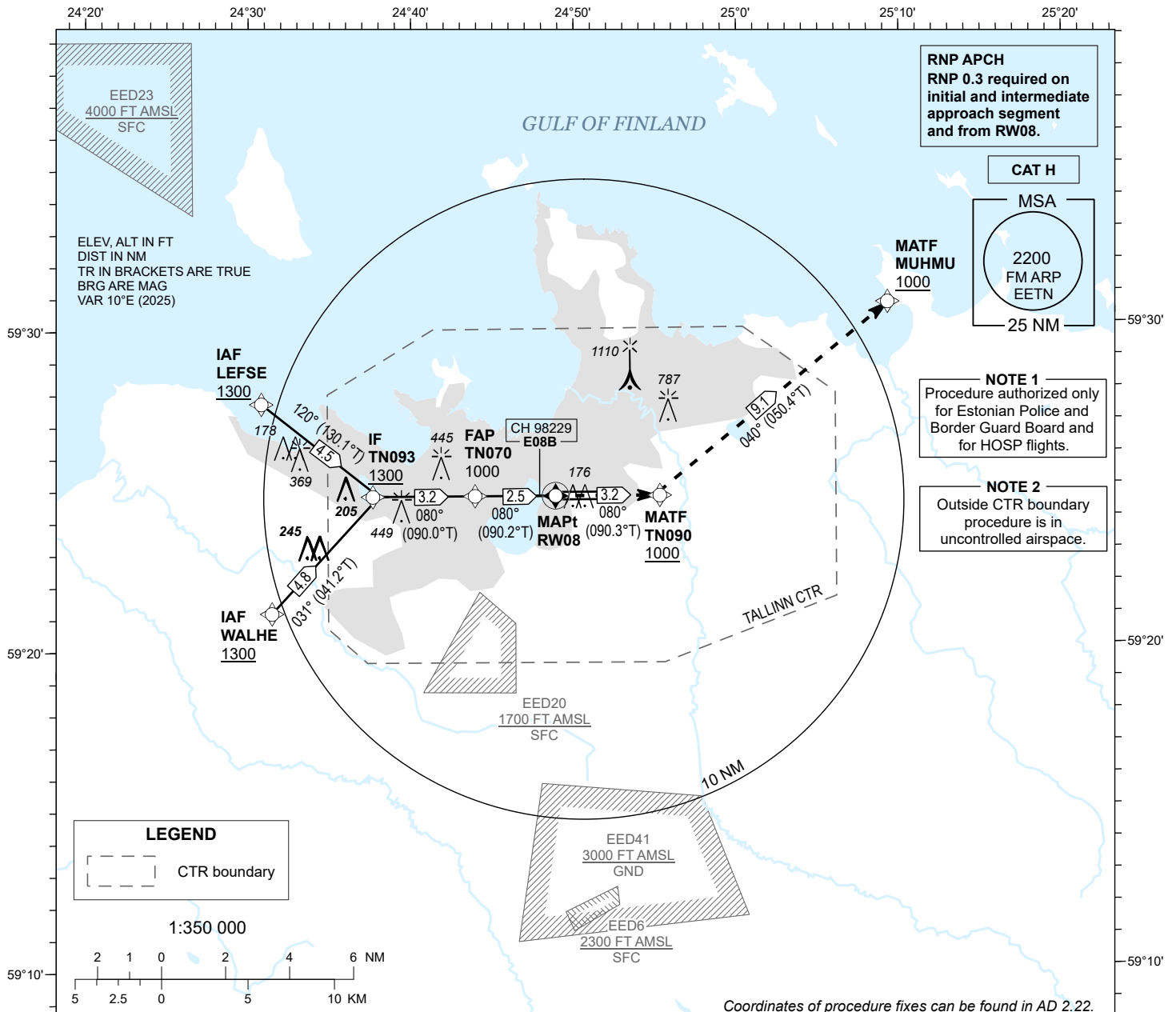
EGNOS
CH 98229
E08B

AD ELEV 135 FT
HEIGHTS RELATED TO
THR RWY 08 ELEV 130 FT

RADAR 127.905
TOWER 135.905
ATIS 124.880 / TEL: +372 625 8210

**LENNART MERI
TALLINN (EETN)**

**RNP H RWY 08
(CAT H)**



RNP APCH
RNP 0.3 required on
initial and intermediate
approach segment
and from RW08.

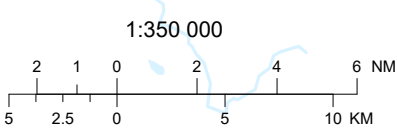
CAT H

MSA
2200
FM ARP
EETN
25 NM

NOTE 1
Procedure authorized only
for Estonian Police and
Border Guard Board and
for HOSP flights.

NOTE 2
Outside CTR boundary
procedure is in
uncontrolled airspace.

LEGEND
CTR boundary



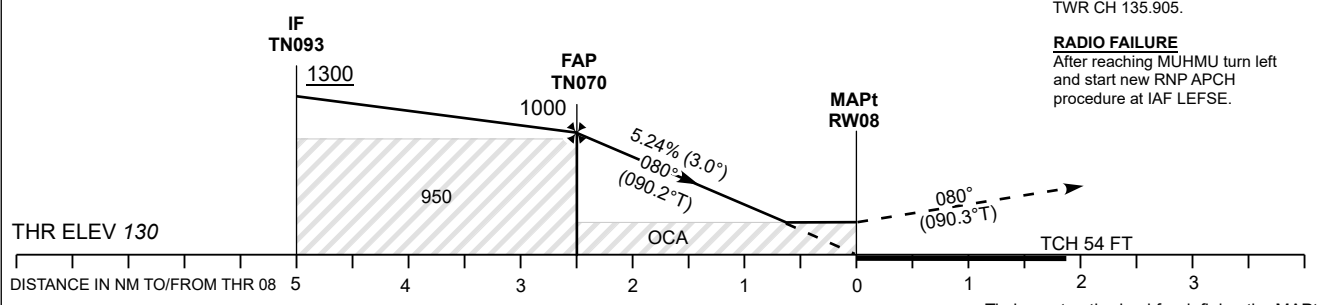
Coordinates of procedure fixes can be found in AD 2.22.

TRANSITION ALT 5000

MISSED APPROACH
Climb to TN090 reaching 1000 FT,
turn left to MUHMU and remain
TWR CH 135.905.

RADIO FAILURE
After reaching MUHMU turn left
and start new RNP APCH
procedure at IAF LEFSE.

CHANGES: Magnetic variation and courses.



ALS specially approved for Cat I RVR 550 m.

OCA (H)	CAT H
LPV Cat I	324 (194)

Final Approach DIST	2.5 NM	2.0 NM	1.5 NM	1.0 NM	0.5 NM	
ALT	980	820	660	500	340	
HGT	850	690	530	370	210	
	KT	60	80	100	120	140
FAP-MAPt 2.5 NM	MIN:SEC	2:32	1:54	1:32	1:16	1:06
Rate of descent	FT / MIN	310	420	530	630	740