

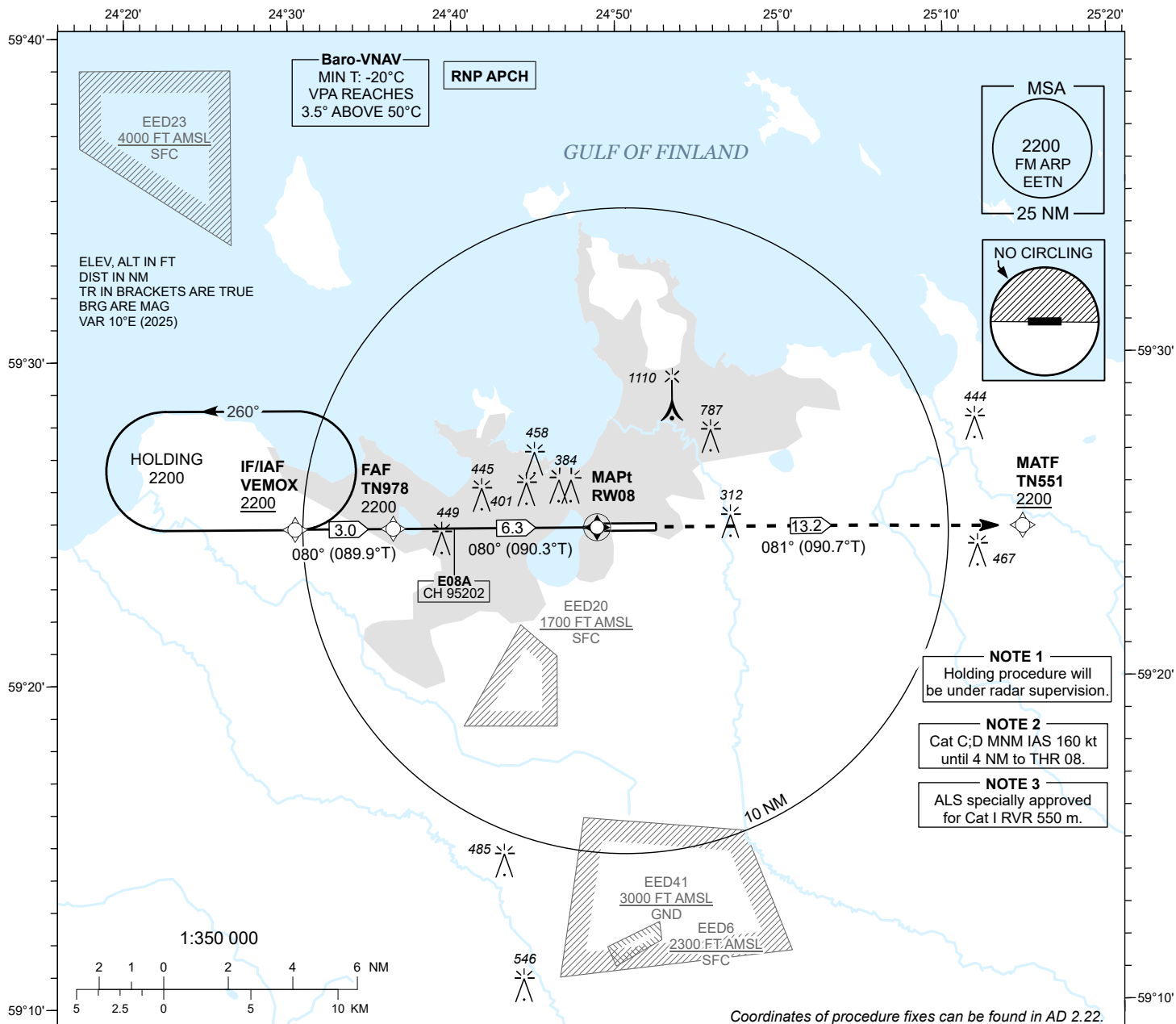
**INSTRUMENT
APPROACH
CHART - ICAO**

**SBAS
CH 95202
E08A**

**AD ELEV 135 FT
HEIGHTS RELATED TO
THR RWY 08 ELEV 130 FT**

**RADAR 127.905
TOWER 135.905
ATIS 124.880 / TEL: +372 625 8210**

**LENNART MERI
TALLINN (EETN)
RNP Z RWY 08**



NOTE 1
Holding procedure will be under radar supervision.

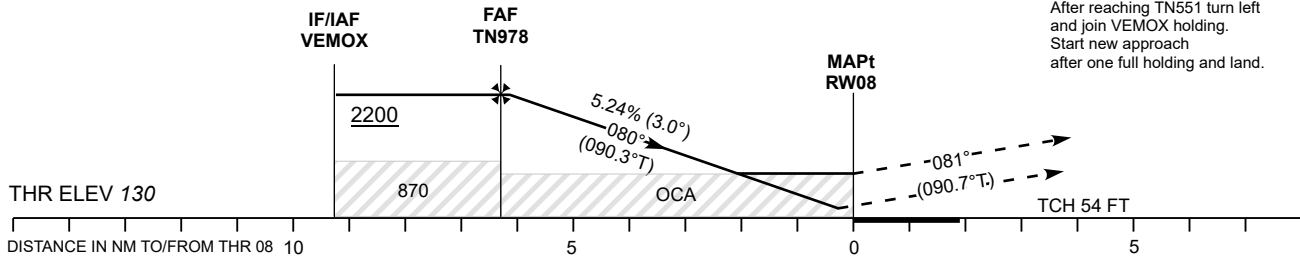
NOTE 2
Cat C; D MNM IAS 160 kt until 4 NM to THR 08.

NOTE 3
ALS specially approved for Cat I RVR 550 m.

TRANSITION ALT 5000

MISSED APPROACH
Climb to TN551 to 2200 and contact radar CH 127.905.

RADIO FAILURE
After reaching TN551 turn left and join VEMOX holding. Start new approach after one full holding and land.



ALS specially approved for Cat I RVR 550 m.

Timing not authorized for defining the MAPt.

OCA (H)	A	B	C	D	Final Approach DIST	6.0 NM	5.0 NM	4.0 NM	3.0 NM	2.0 NM
LPV Cat I	336 (206)	349 (219)	357 (227)	367 (237)	ALT	2100	1780	1460	1140	820
LNAV/VNAV	520 (390)	530 (400)	540 (410)	550 (420)	HGT	1970	1650	1330	1010	690
LNAV	650 (520)				FAF-MAPt 6.3 NM	MIN:SEC	4:14	3:48	3:10	2:43
Circling (S of AD only)	1360 (1230)				Rate of descent	FT / MIN	475	530	635	740

CHANGES: Magnetic variation and courses, editorial.