

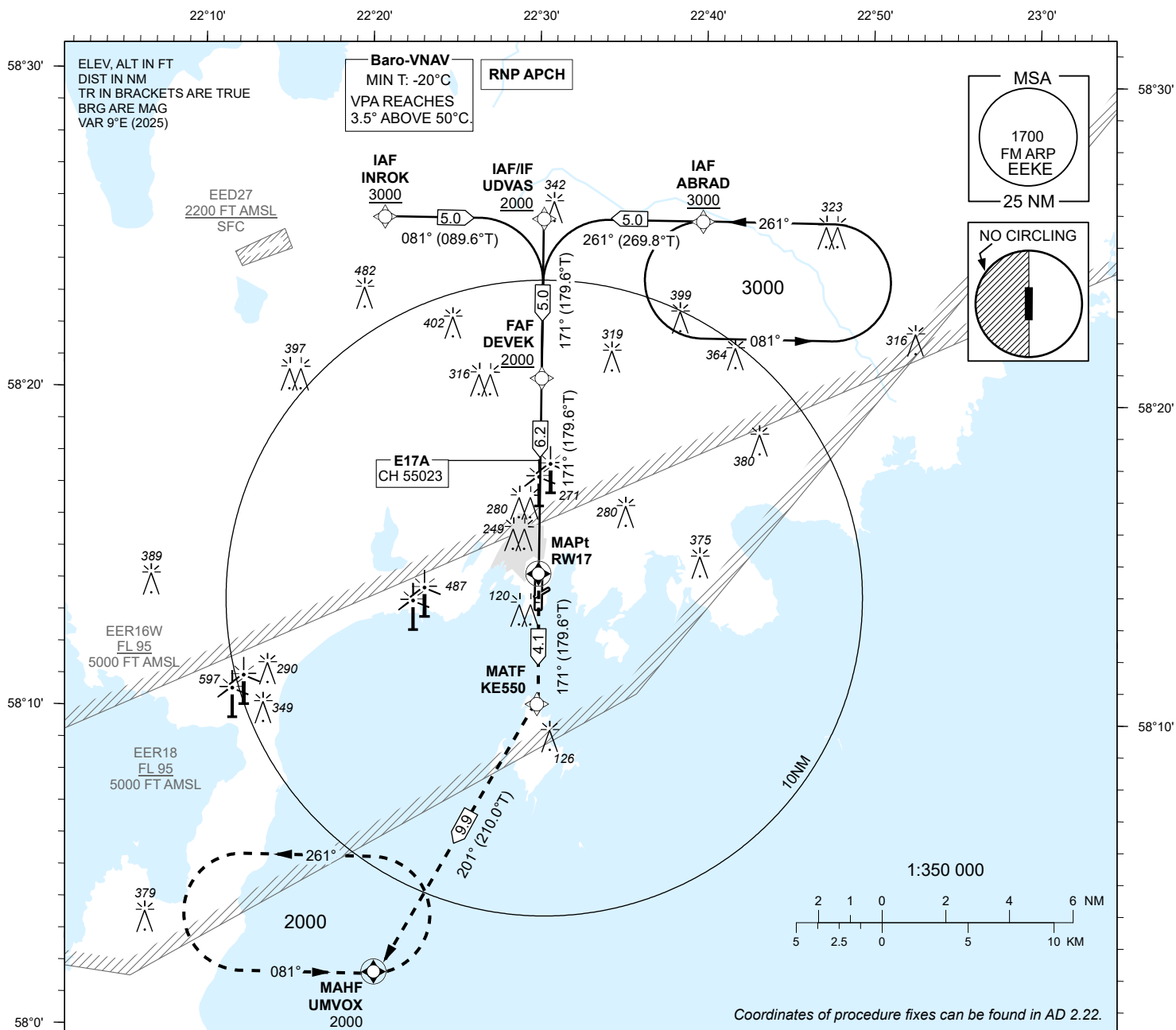
# INSTRUMENT APPROACH CHART - ICAO

SBAS  
CH 55023  
E17A

AD ELEV **15 FT**  
HEIGHTS RELATED TO  
THR RWY 17 ELEV **10 FT**

INFORMATION 118.055

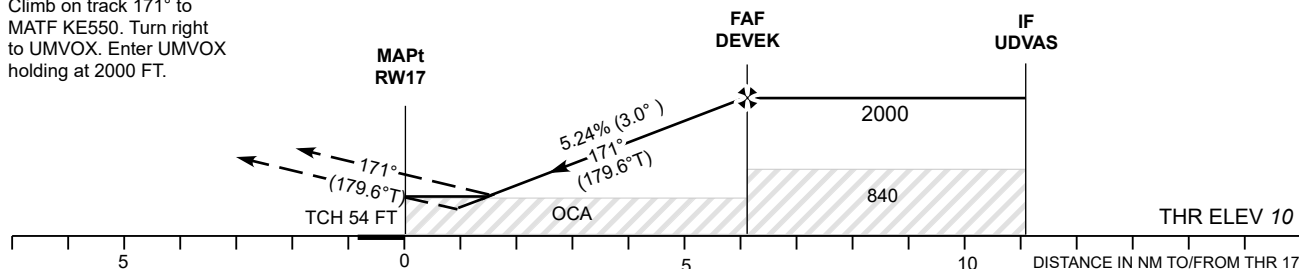
**KURESSAARE (EEKE)**  
**RNP RWY 17**  
(CAT A;B;C)



## MISSED APPROACH:

Climb on track 171° to MATF KE550. Turn right to UMVOX. Enter UMVOX holding at 2000 FT.

TRANSITION ALT 5000



Decision heights (DH) below 250 FT shall not be used due to APV approach operation Type A limitations.

Decision heights (DH) below 250 FT shall not be used due to APV approach operation Type A limitations.				Final Approach DIST	5.0 NM	4.0 NM	3.0 NM	2.0 NM	1.0 NM (LPV)		
OCA (H)	A	B	C	ALT	1660	1340	1030	710	400		
LPV	242 (232)	255 (245)	263 (253)	HGT	1650	1330	1020	700	390		
LNAV/VNAV	410 (400)	430 (420)			KT		90	100	120	140	160
LNAV	530 (520)			FAF-MAPt 6.2 NM	MIN:SEC		4:08	3:43	3:06	2:39	2:20
Circling E of AD only	610 (600)		710 (700)	Rate of descent	FT / MIN		475	530	635	740	850

CHANGES: Magnetic variation and courses, editorial.