

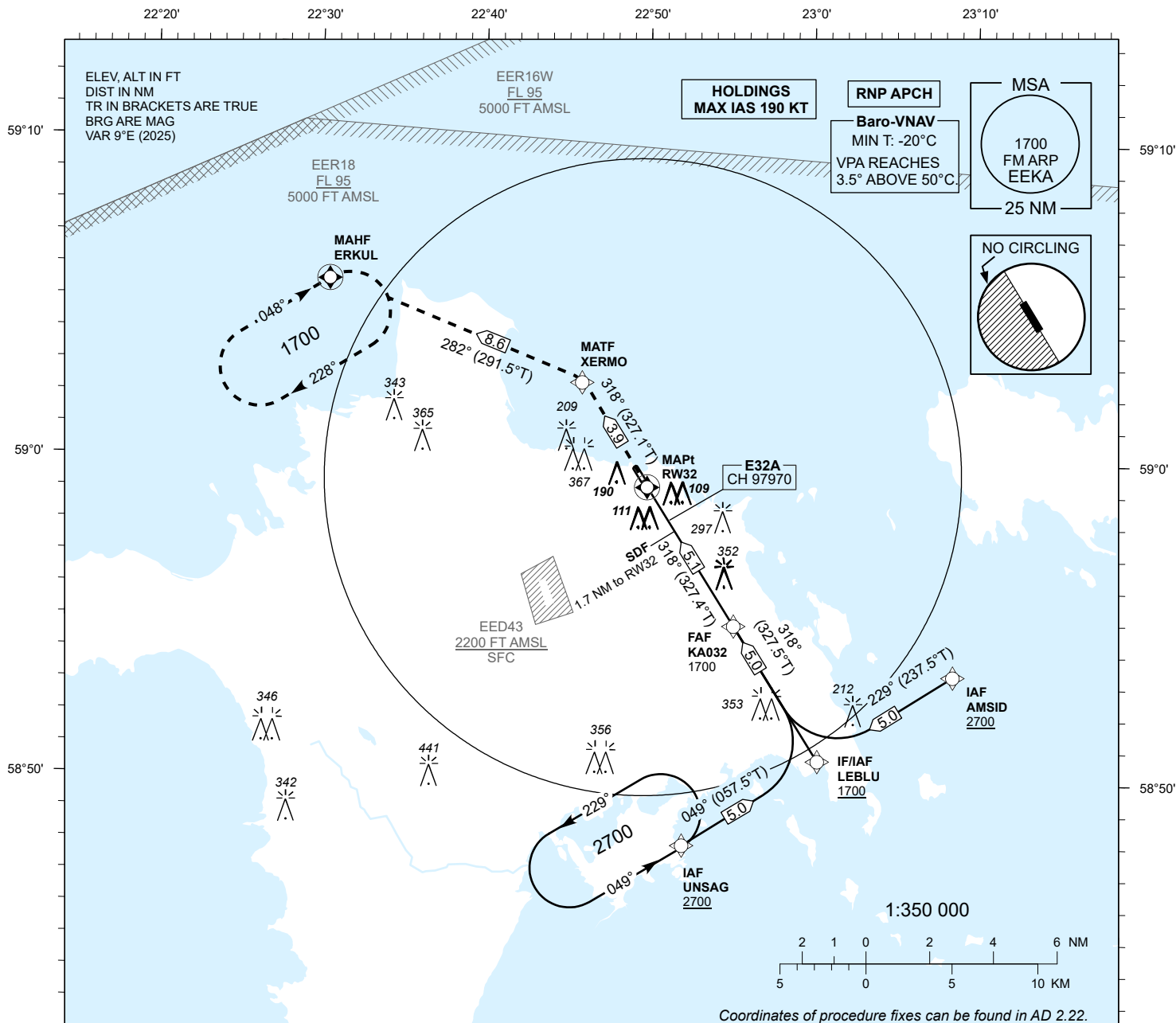
INSTRUMENT APPROACH CHART - ICAO

SBAS
CH 97970
E32A

AD ELEV 18 FT
HEIGHTS RELATED TO
THR RWY 32 ELEV 15 FT

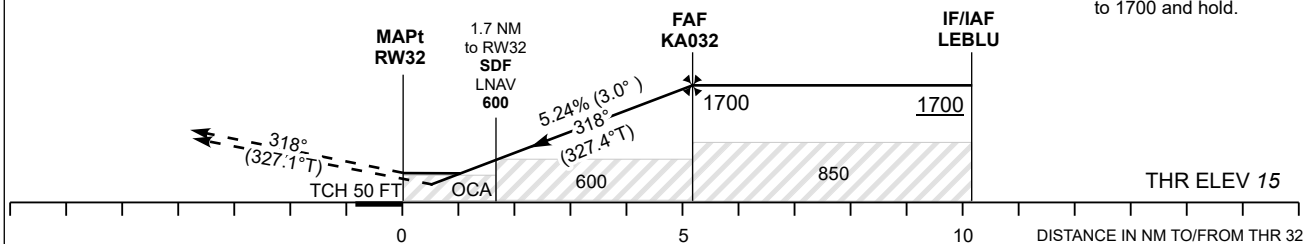
INFORMATION 133.405

KÄRDLA (EEKA)
RNP RWY 32
(CAT A;B;C)



TRANSITION ALT 5000

MISSED APPROACH:
Climb on track 318° to
MATF XERMO. Turn left to
MAHF ERKUL climbing to
1700 and hold.



Decision heights (DH) below 250 FT shall not be used due to APV
approach operation Type A limitations.

				Final Approach DIST	5.0 NM	4.0 NM	3.0 NM	2.0 NM	1.0 NM
OCA (H)	A	B	C	ALT	1660	1340	1020	700	380
LPV	232 (217)	245 (230)	253 (238)	HGT	1650	1330	1010	690	370
LNAV/VNAV	239 (224)	252 (237)	266 (251)		KT	90	100	120	140
LNAV	360 (350)			FAF-MAPt 5.1 NM	MIN:SEC	3:26	3:05	2:35	2:13
Circling E of AD only	420 (410)	510 (500)	750 (740)	Rate of descent	FT / MIN	480	535	640	745

CHANGES: Magnetic variation and courses, editorial.