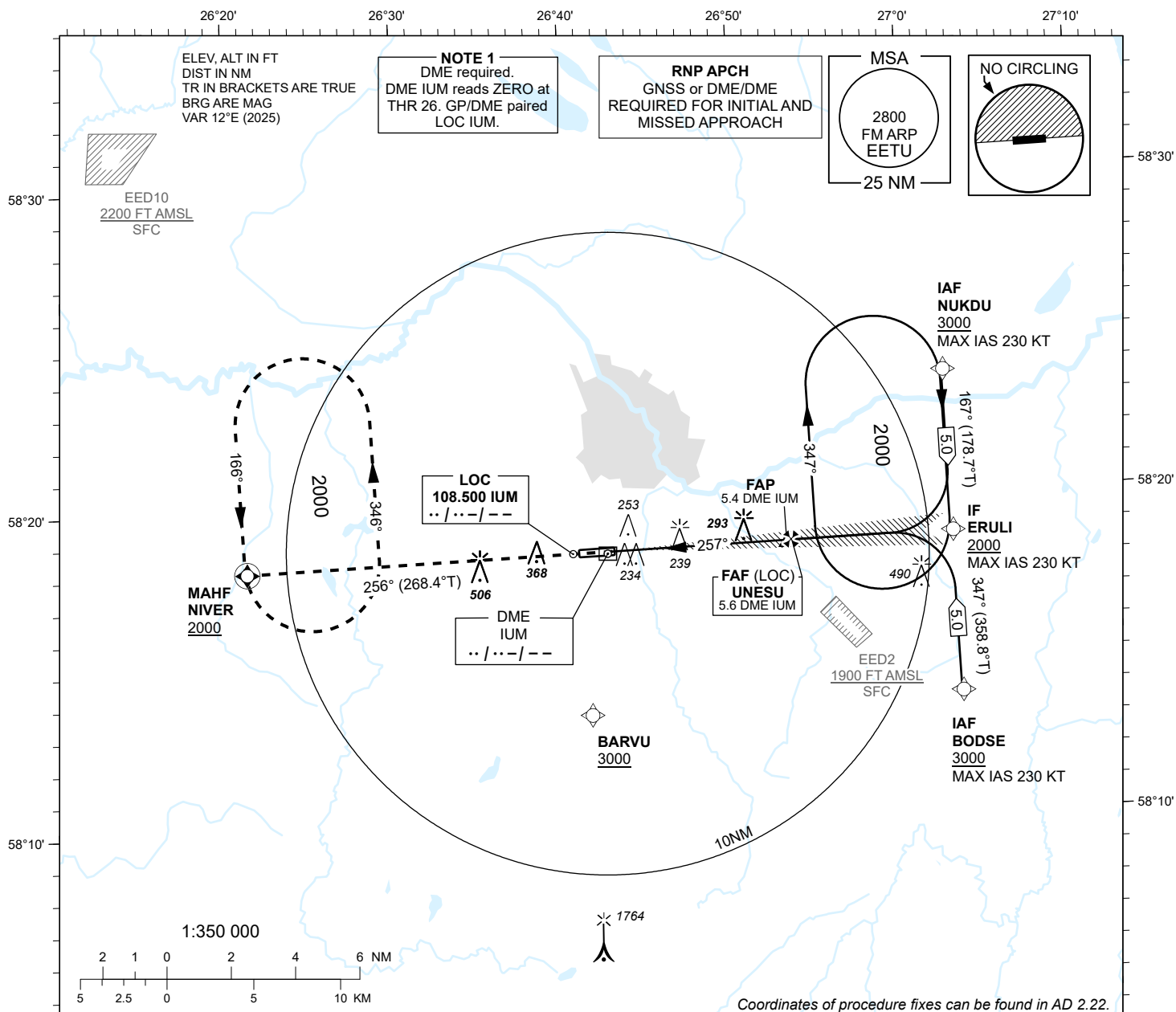


INSTRUMENT
APPROACH
CHART - ICAO

AD ELEV 220 FT
HEIGHTS RELATED TO
THR RWY 26 ELEV 193 FT

INFORMATION 133.905
ATIS 123.130 / TEL: +372 730 9212

TARTU (EETU)
ILS or LOC RWY 26
(CAT A;B;C)

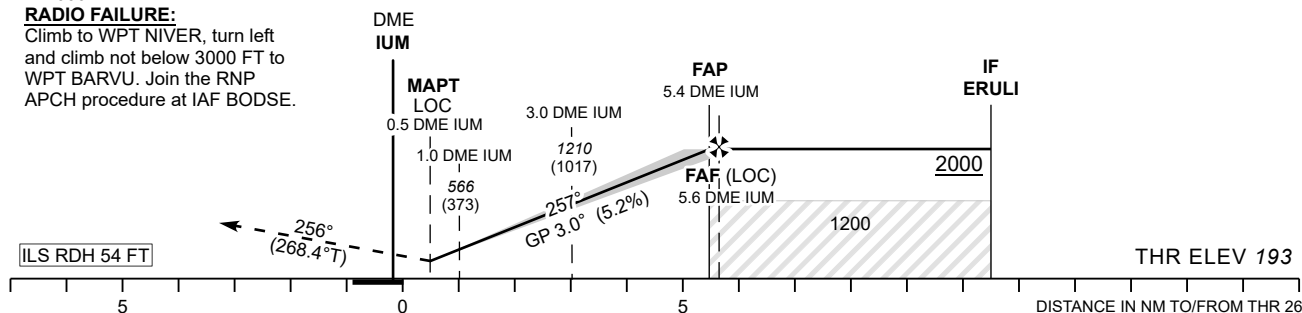


MISSED APPROACH:
Climb on track 256° to NIVER.
Enter NIVER holding climbing to 2000 FT.
RADIO FAILURE:
Climb to WPT NIVER, turn left and climb not below 3000 FT to WPT BARVU. Join the RNP APCH procedure at IAF BODSE.

TRANSITION ALT 5000

| DME IUM | DME 2 | DME 3 | DME 4 | DME 5 |
|---------|-------|--------|--------|--------|
| ALT | 880 | 1200 | 1520 | 1800 |
| HGT | (690) | (1010) | (1330) | (1610) |

Table for LOC ONLY approach.



NO OFZ RWY 26

| OCA (H) | | A | B | C | Timing not authorized for defining the MAPt. | | | | | | |
|-------------------------|----------|-----------|-----------|-----------|--|----------|------|------|------|------|------|
| Straight-in Approach | CAT I | 434 (241) | 447 (254) | 455 (262) | GS | KT | 90 | 100 | 120 | 140 | 160 |
| | LOC ONLY | 570 (380) | | | FAF-MAPT 5.1 NM | MIN:SEC | 3:24 | 3:04 | 2:33 | 2:11 | 1:55 |
| Circling (S of AD only) | | 680 (460) | 720 (500) | 900 (680) | Rate of descent | FT / MIN | 475 | 530 | 635 | 740 | 850 |