

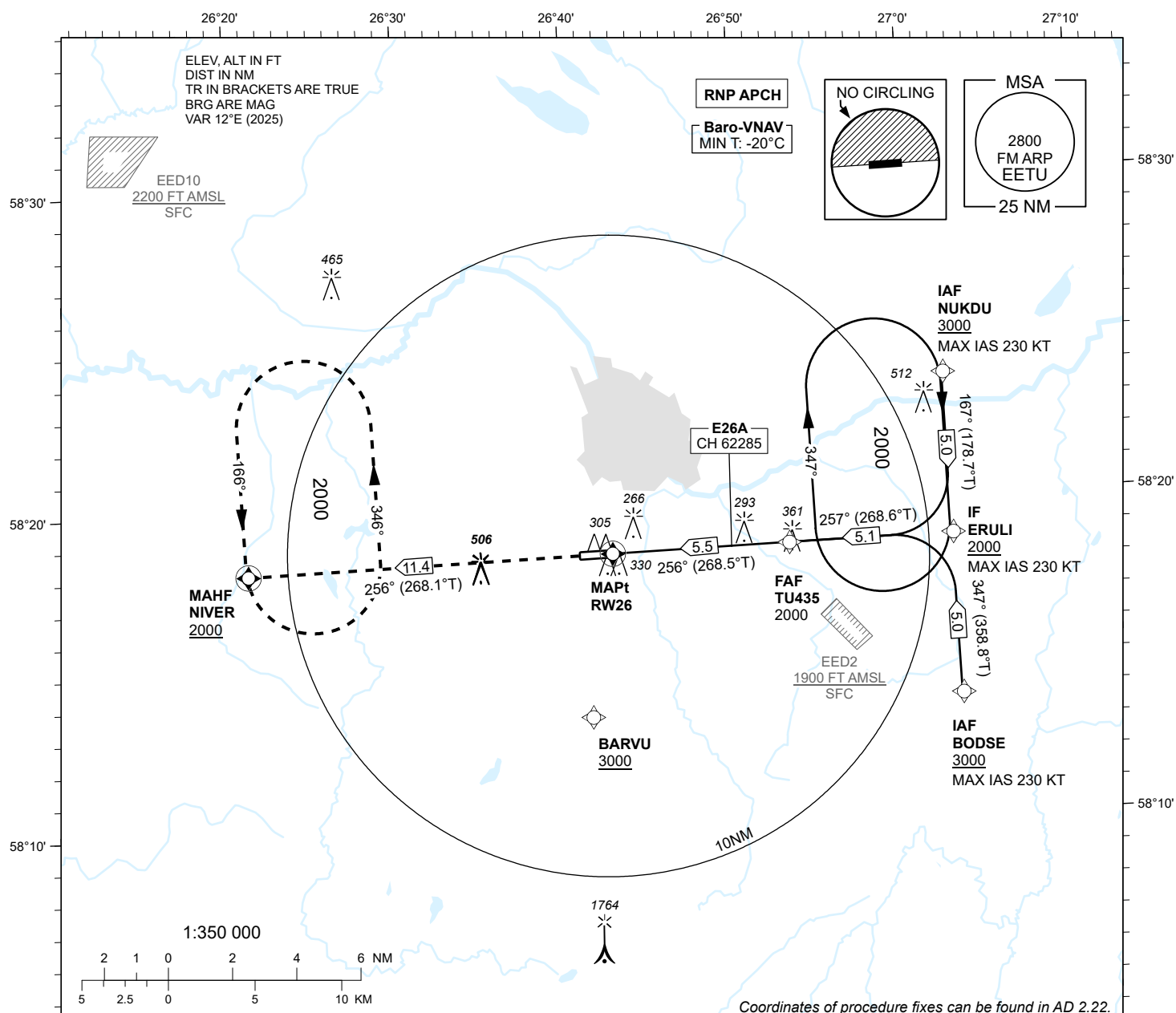
**INSTRUMENT  
APPROACH  
CHART - ICAO**

**SBAS  
CH 62285  
E26A**

**AD ELEV 220 FT  
HEIGHTS RELATED TO  
THR RWY 26 ELEV 193 FT**

INFORMATION 133.905  
ATIS 123.130 / TEL: +372 730 9212

**TARTU (EETU)  
RNP RWY 26  
(CAT A;B;C)**



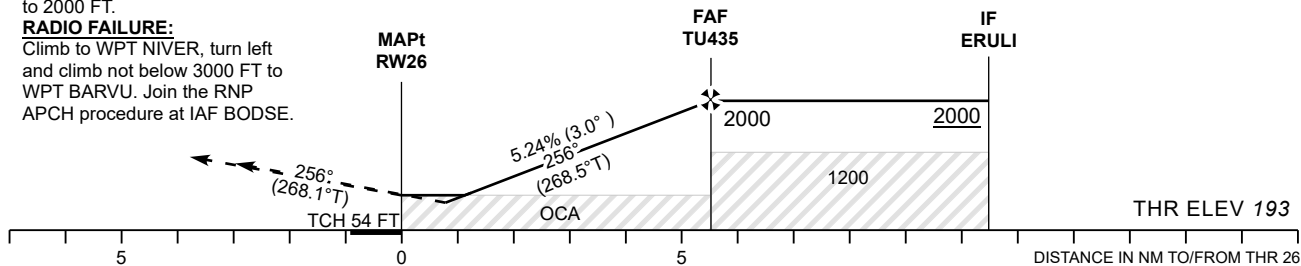
**MISSED APPROACH:**

Climb on track 256° to NIVER.  
Enter NIVER holding climbing  
to 2000 FT.

**RADIO FAILURE:**

Climb to WPT NIVER, turn left  
and climb not below 3000 FT to  
WPT BARVU. Join the RNP  
APCH procedure at IAF BODSE.

TRANSITION ALT 5000



				Final Approach DIST	5.0 NM	4.0 NM	3.0 NM	2.0 NM	1.0 NM	
OCA (H)	A	B	C	ALT	1840	1520	1200	880	570	
LPV Cat I	434 (241)	447 (254)	455 (262)	HGT	1650	1330	1010	690	370	
LNAV/VNAV	434 (241)	447 (254)	459 (266)		KT	90	100	120	140	160
LNAV	540 (350)			FAF-MAPt 5.5 NM	MIN:SEC	3:40	3:18	2:45	2:22	2:04
Circling (S of AD only)	680 (460)	720 (500)	900 (680)	Rate of descent	FT / MIN	480	535	640	745	850