

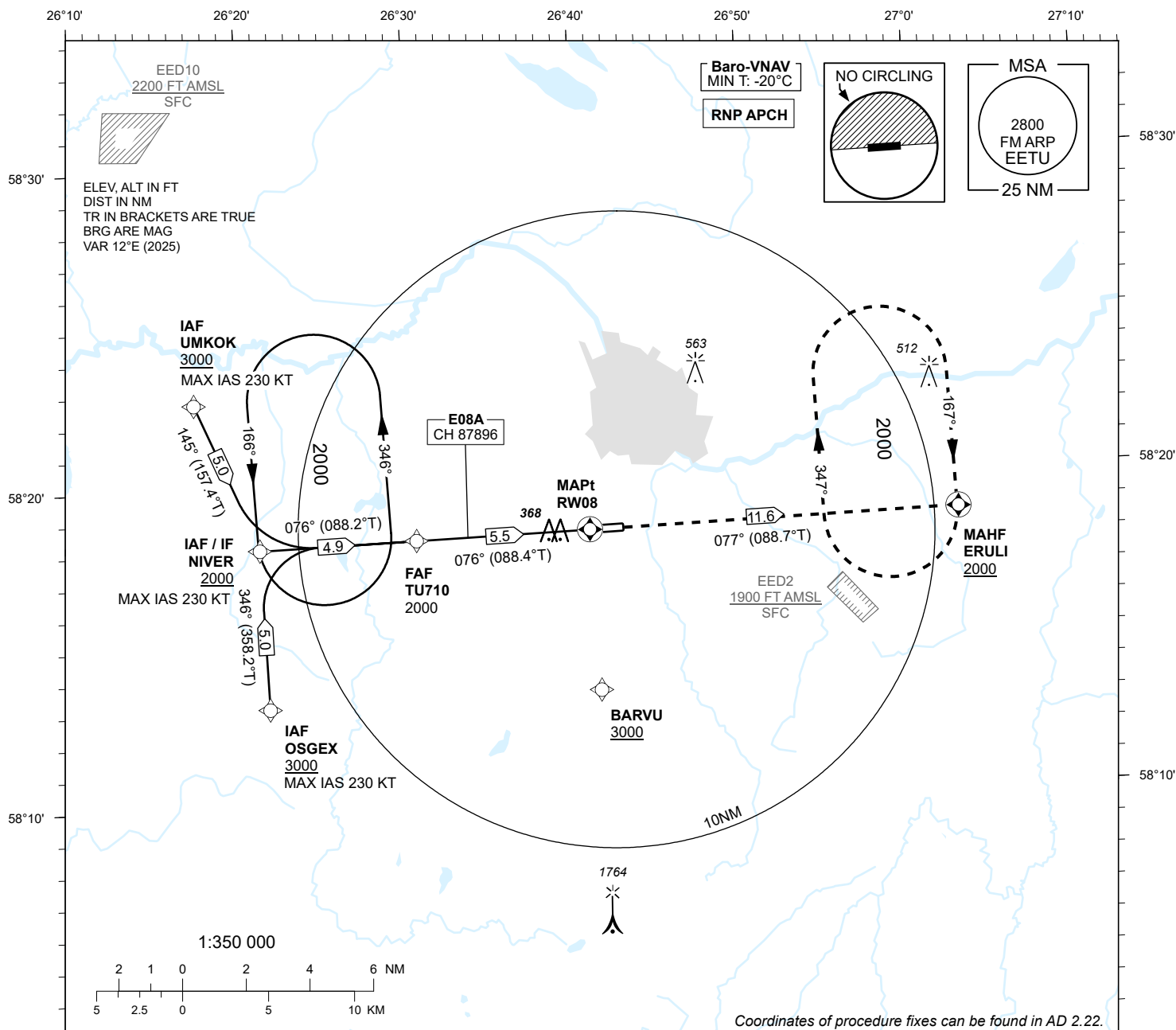
INSTRUMENT
APPROACH
CHART - ICAO

SBAS
CH 87896
E08A

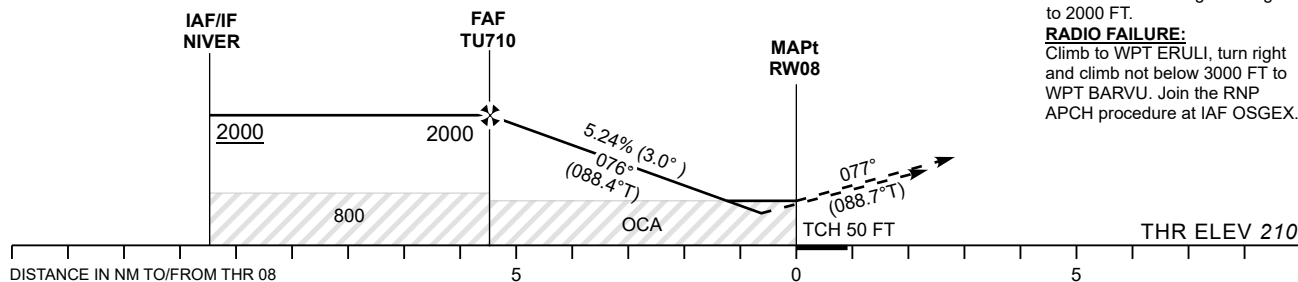
AD ELEV 220 FT
HEIGHTS RELATED TO
THR RWY 08 ELEV 210 FT

INFORMATION 133.905
ATIS 123.130 / TEL: +372 730 9212

TARTU (EETU)
RNP RWY 08
(CAT A;B;C)



TRANSITION ALT 5000



MISSED APPROACH:
Climb on track 077° to ERULI.
Enter ERULI holding climbing
to 2000 FT.
RADIO FAILURE:
Climb to WPT ERULI, turn right
and climb not below 3000 FT to
WPT BARVU. Join the RNP
APCH procedure at IAF OSGEX.

Decision heights (DH) below 250 FT shall not be used due to APV
approach operation Type A limitations.

Final Approach DIST				5.0 NM	4.0 NM	3.0 NM	2.0 NM	1.0 NM
OCA (H)				ALT	1850	1530	1210	580
LPV				HGT	1640	1320	1000	370
LNAV/VNAV				KT	90	100	120	160
LNAV				MIN:SEC	3:40	3:18	2:45	2:04
Circling (S of AD only)				Rate of descent	FT / MIN	480	535	850