

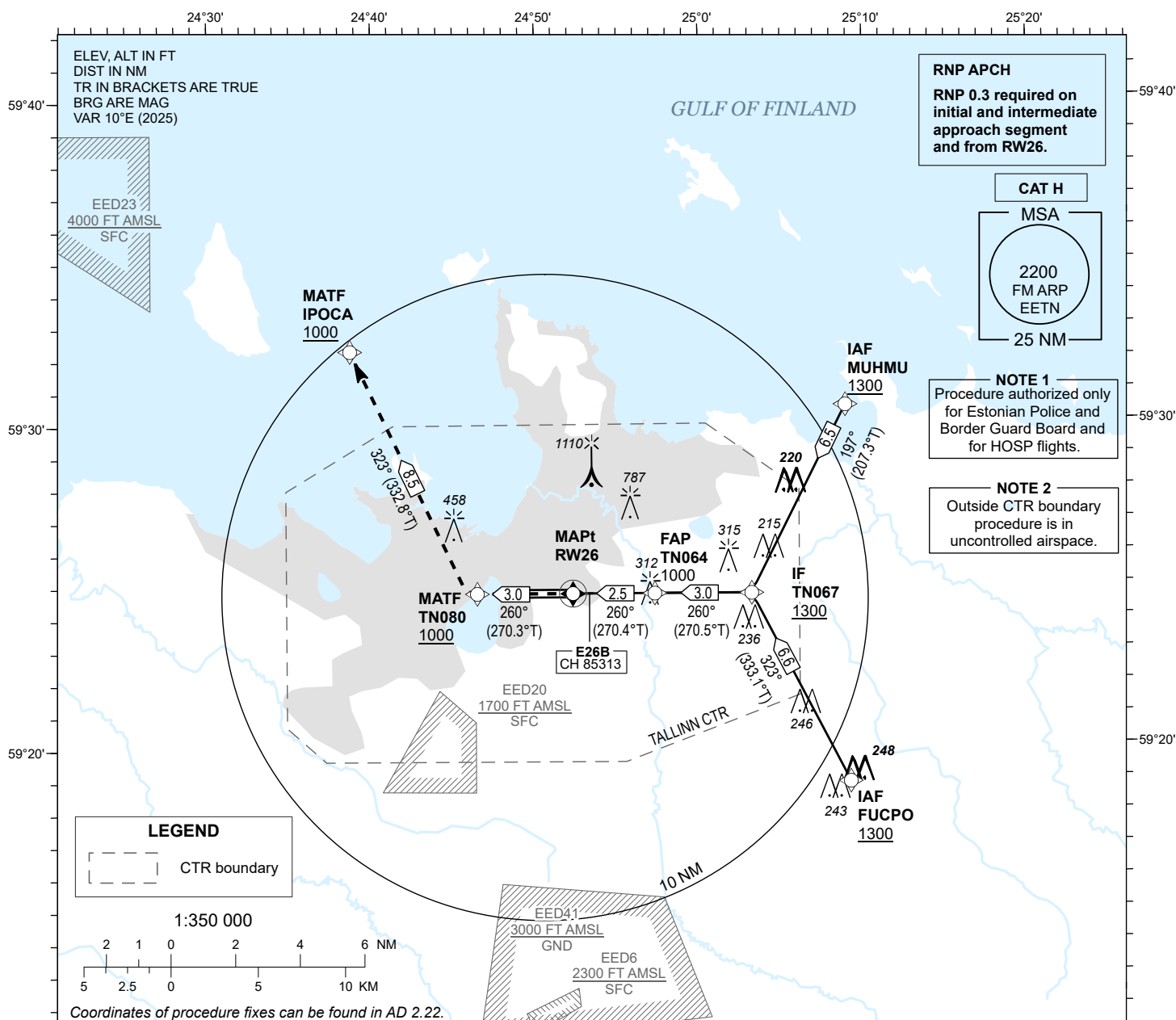
**INSTRUMENT
APPROACH
CHART - ICAO**

**EGNOS
CH 85313
E26B**

**AD ELEV 135 FT
HEIGHTS RELATED TO
THR RWY 26 ELEV 135 FT**

RADAR 127.905
TOWER 135.905
ATIS 124.880 / TEL: +372 625 8210

**LENNART MERI
TALLINN (EETN)
RNP H RWY 26
(CAT H)**



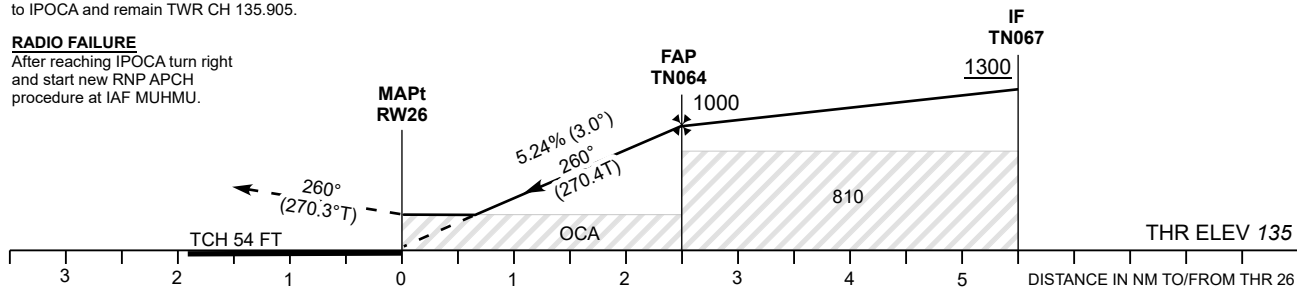
MISSED APPROACH

Climb to TN080 reaching 1000 FT, turn right to IPOCA and remain TWR CH 135.905.

RADIO FAILURE

After reaching IPOCA turn right and start new RNP APCH procedure at IAF MUHMU.

TRANSITION ALT 5000



Timing not authorized for defining the MAPt.

OCA (H)	CAT H
LPV Cat I 4.2%*	366 (231)
LPV Cat I 4.5%*	335 (200)

* MNM MISSED APCH CLIMB GRADIENT

Final Approach DIST	0.5 NM	1.0 NM	1.5 NM	2.0 NM	2.5 NM
ELEV	350	510	670	830	990
HGT	210	370	530	690	850
	KT	60	80	100	120
FAP-MAPt 2.5 NM	MIN:SEC	2:31	1:54	1:31	1:16
Rate of descent	FT / MIN	310	420	530	630