

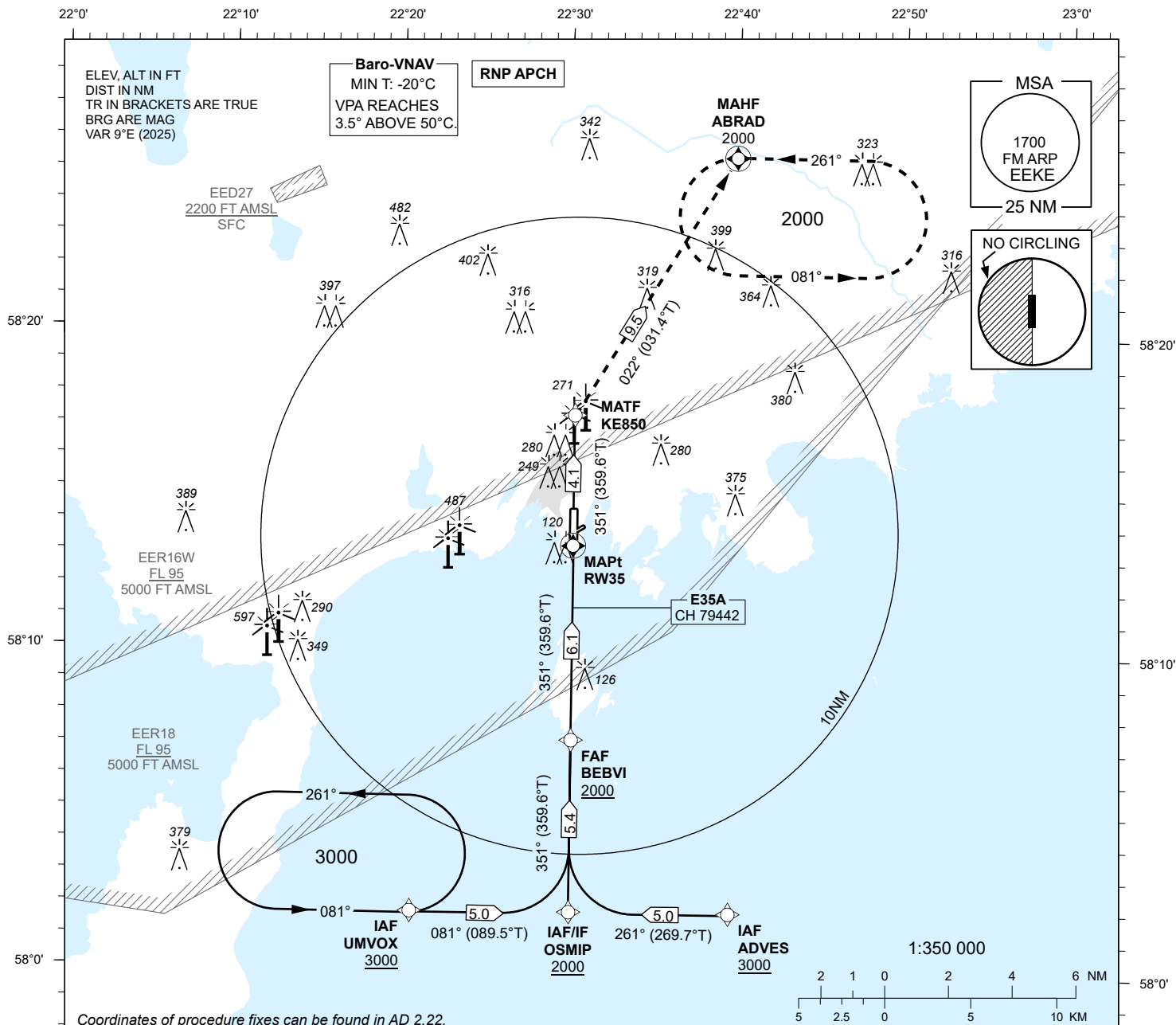
INSTRUMENT APPROACH CHART - ICAO

SBAS
CH 79442
E35A

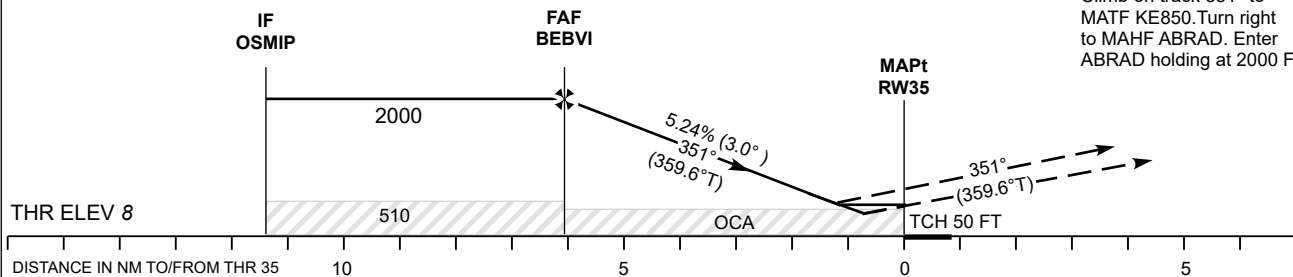
AD ELEV 15 FT
HEIGHTS RELATED TO
THR RWY 35 ELEV 8 FT

INFORMATION 118.055

KURESSAARE (EEKE)
RNP RWY 35
(CAT A;B;C)



TRANSITION ALT 5000



MISSED APPROACH:
Climb on track 351° to
MATF KE850. Turn right
to MAHF ABRAD. Enter
ABRAD holding at 2000 FT.

Decision heights (DH) below 250 FT shall not be used due to APV
approach operation Type A limitations.

Decision heights (DH) below 250' F1 shall not be used due to APV approach operation Type A limitations.				Final Approach DIST	5.0 NM	4.0 NM	3.0 NM	2.0 NM	1.0 NM (LPV)
OCA (H)	A	B	C	ALT	1650	1340	1020	700	390
LPV	249 (241)	262 (254)	270 (262)	HGT	1640	1330	1010	690	380
LNAV/VNAV	250 (240)	270 (260)			KT	90	100	120	140 160
LNAV	380 (370)			FAF-MAPt 6.1 NM	MIN:SEC	4:04	3:40	3:03	2:37 2:17
Circling E of AD only	610 (600)		710 (700)	Rate of descent	FT / MIN	475	530	635	740 850

CHANGES: Magnetic variation and courses, editorial.