

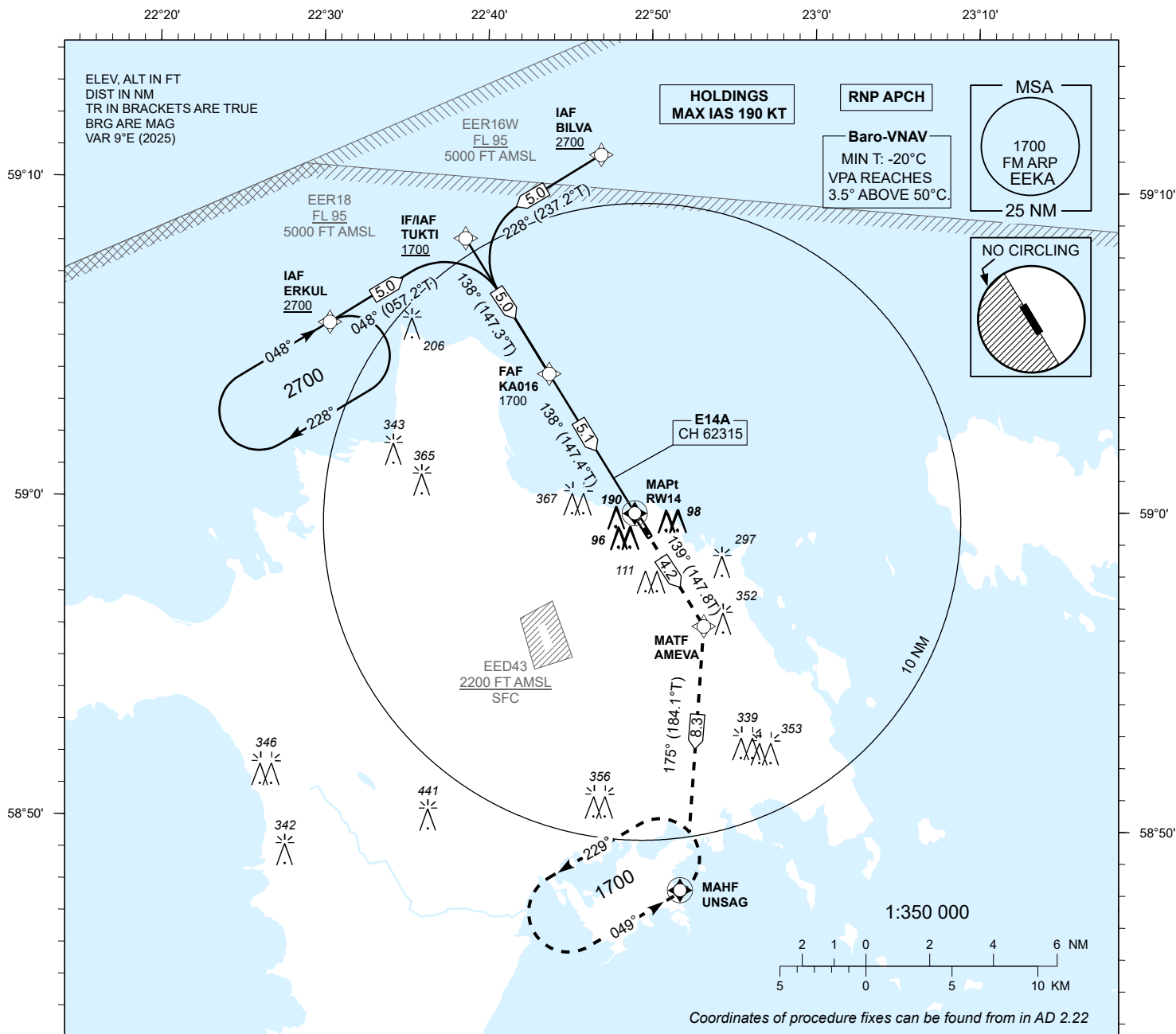
# INSTRUMENT APPROACH CHART - ICAO

SBAS  
CH 62315  
E14A

AD ELEV 18 FT  
HEIGHTS RELATED TO  
THR RWY 14 ELEV 12 FT

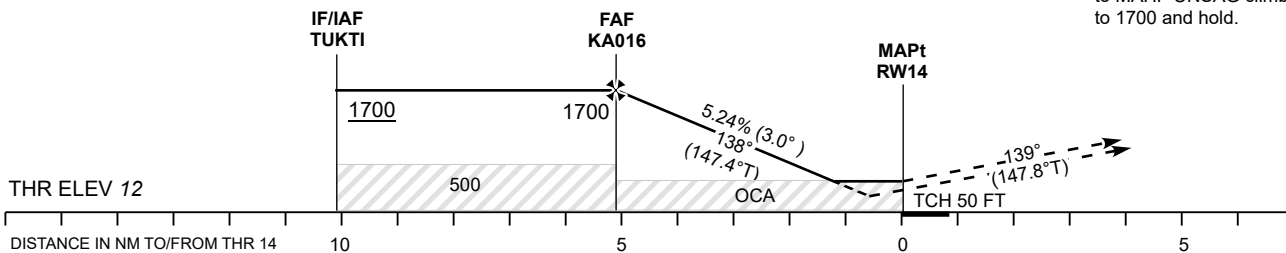
INFORMATION 133.405

**KÄRDLA (EEKA)**  
**RNP RWY 14**  
(CAT A;B;C)



TRANSITION ALT 5000

**MISSED APPROACH:**  
Climb on track 139° to  
MATF AMEVA. Turn right  
to MAHF UNSAG climbing  
to 1700 and hold.



Decision heights (DH) below 250 FT shall not be used due to APV  
approach operation Type A limitations.

				Final Approach DIST	5.0 NM	4.0 NM	3.0 NM	2.0 NM	1.0 NM
OCA (H)				ALT	1660	1340	1020	700	380
				HGT	1650	1330	1010	690	370
LPV					228 (216)	241 (229)	249 (237)		
LNAV/VNAV					253 (241)	258 (246)	262 (250)		
LNAV					340 (320)				
Circling E of AD only					420 (410)	510 (500)	750 (740)		
				FAF-MAPt 5.1 NM	MIN:SEC	3:26	3:06	2:35	2:13
				Rate of descent	FT / MIN	480	535	640	745

CHANGES: Magnetic variation and courses, editorial.