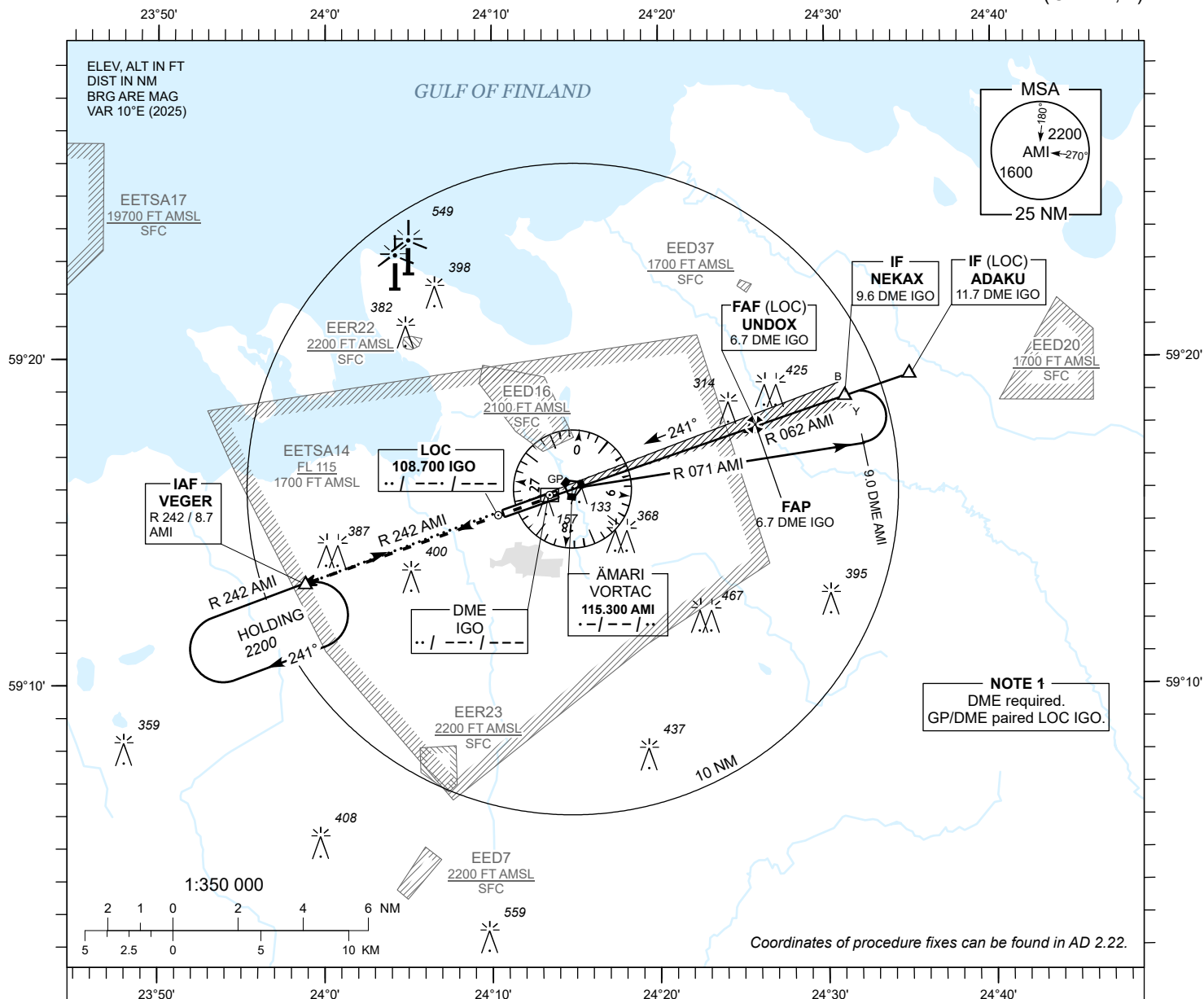


INSTRUMENT  
APPROACH  
CHART - ICAO

AD ELEV 70 FT  
HEIGHTS RELATED TO  
THR RWY 24 ELEV 60 FT

TALLINN RADAR 127.905  
ÄMARI TOWER 122.100 / 257.800

ÄMARI (EEEE)  
MILITARY AERODROME  
ILS or LOC RWY 24  
(CAT A;B)



**MISSED APPROACH**

Climb on track 241 to 2200 and expect radar vectors. Contact TALLINN RADAR CH 127.905.

**COMMUNICATION FAILURE**

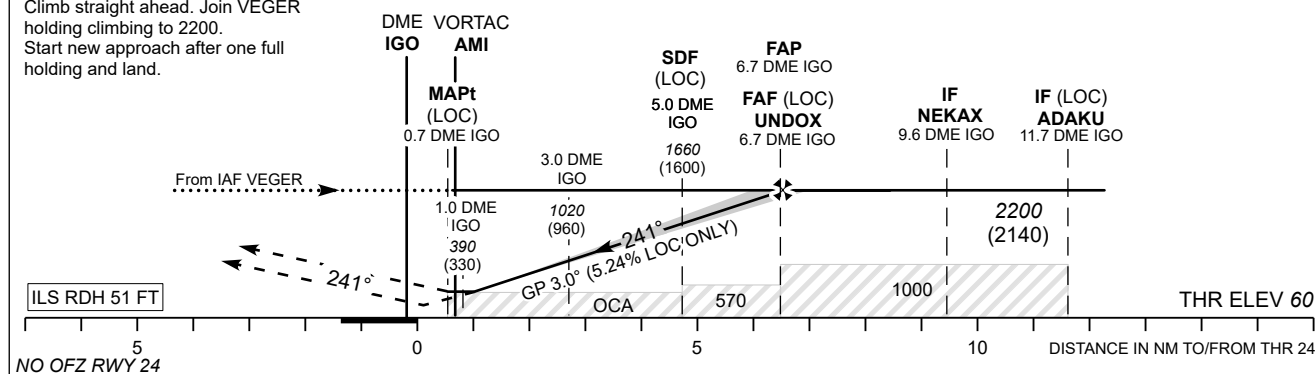
Climb straight ahead. Join VEGE holding climbing to 2200. Start new approach after one full holding and land.

TRANSITION ALT 5000

DME IGO	1 NM	2 NM	3 NM	4 NM	5 NM	6 NM
ALT	390	700	1020	1340	1660	1980
HGT	(330)	(640)	(960)	(1280)	(1600)	(1920)

Table for LOC ONLY approach.

CHANGES: AD elevation, CAT A circling OCA(H).



OCA (H)			Timing not authorized for defining the MAPt.					
Straight-in Approach	CAT I	A	B	LOC ONLY		KT	80	90
	LOC ONLY	298 (238)	310 (250)	570 (510)		MIN : SEC	4:30	4:00
	LOC ONLY + SDF	400 (340)		400 (340)			3:36	3:00
Circling				Rate of descent		FT / MIN	425	480
							535	640
							745	