

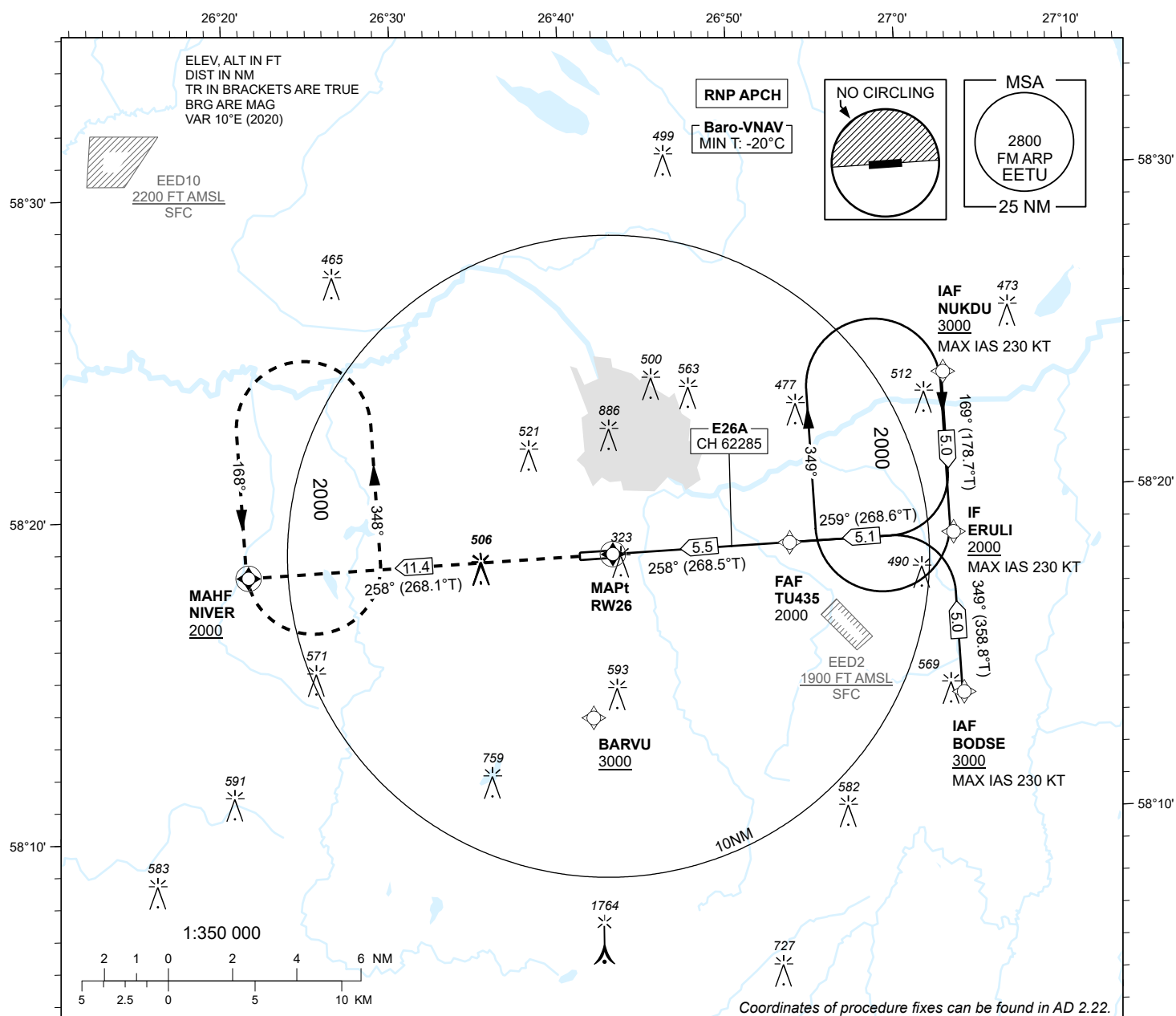
**INSTRUMENT  
APPROACH  
CHART - ICAO**

**SBAS  
CH 62285  
E26A**

**AD ELEV 220 FT  
HEIGHTS RELATED TO  
THR RWY 26 ELEV 193 FT**

INFORMATION 133.905  
ATIS 123.130 / TEL: +372 730 9212

**TARTU (EETU)  
RNP RWY 26  
(CAT A;B;C)**



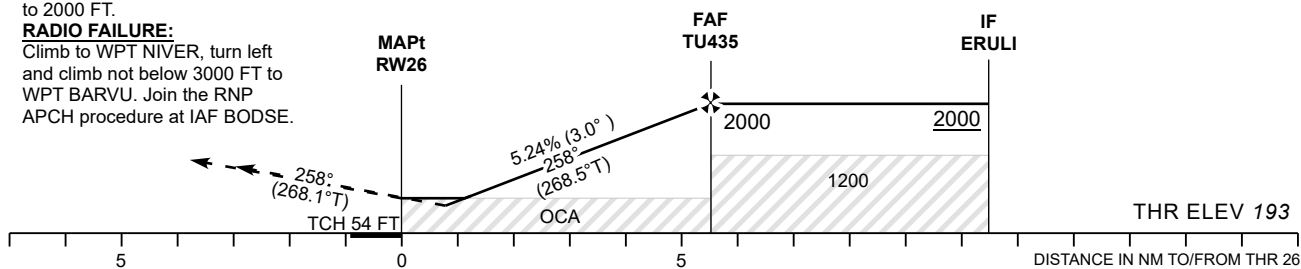
**MISSED APPROACH:**

Climb on track 258° to NIVER.  
Enter NIVER holding climbing  
to 2000 FT.

**RADIO FAILURE:**

Climb to WPT NIVER, turn left  
and climb not below 3000 FT to  
WPT BARVU. Join the RNP  
APCH procedure at IAF BODSE.

TRANSITION ALT 5000



OCA (H)	A	B	C	Final Approach DIST					
				5.0 NM	4.0 NM	3.0 NM	2.0 NM	1.0 NM	
LPV Cat I	417 (224)	429 (236)	437 (244)	ALT	1840	1520	1200	880	570
LNAV/VNAV	430 (240)	440 (250)	450 (260)	HGT	1650	1330	1010	690	370
LNAV	540 (350)			FAF-MAPt 5.5 NM	KT	90	100	120	140
Circling (S of AD only)	630 (410)	730 (510)	900 (680)	Rate of descent	MIN:SEC	3:40	3:18	2:45	2:22
					FT / MIN	480	535	640	745