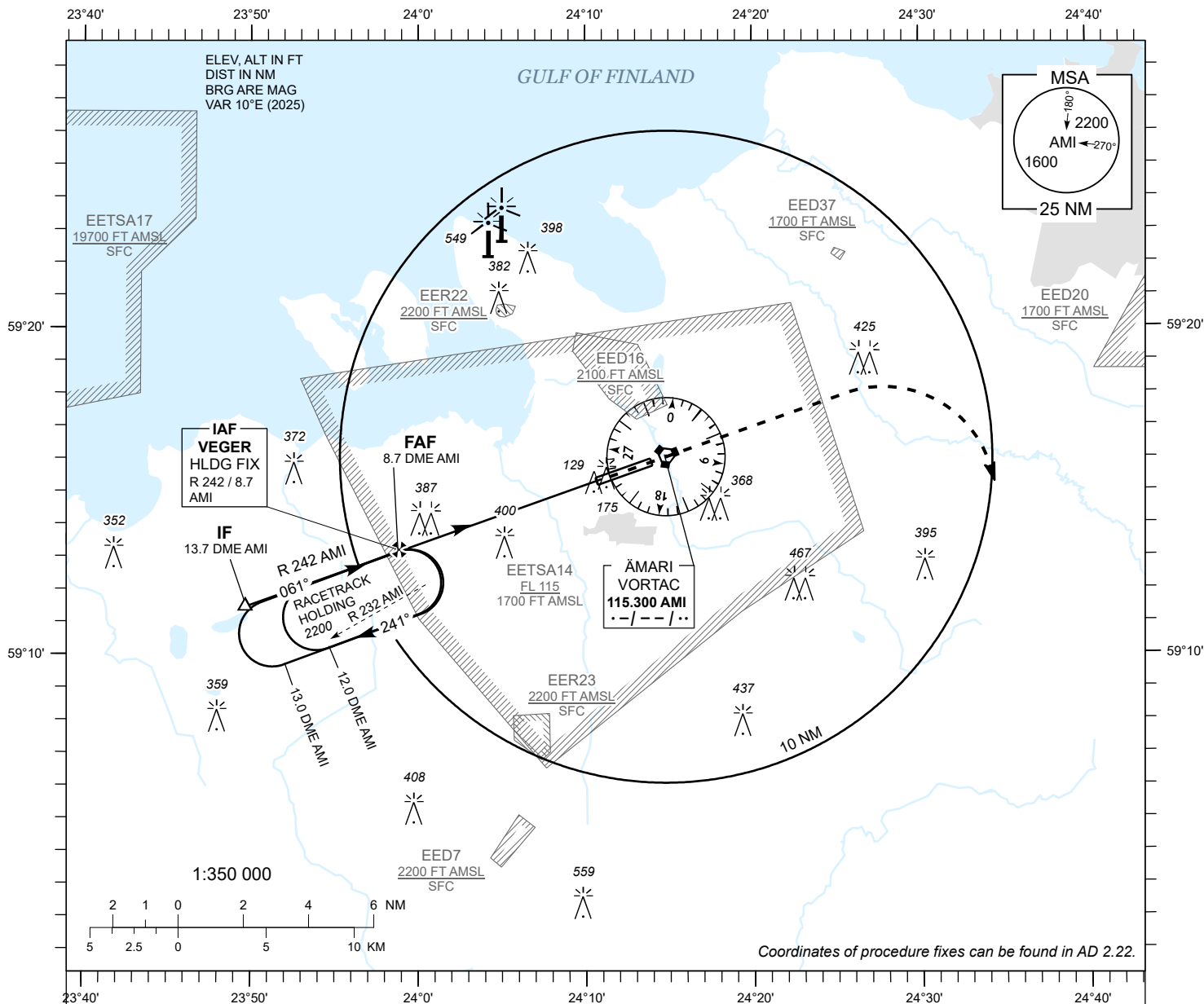


INSTRUMENT APPROACH CHART - ICAO

AD ELEV **68 FT**
HEIGHTS RELATED TO
THR RWY 06 ELEV **65 FT**

TALLINN RADAR 127.905
ÄMARI TOWER 122.100 / 257.800

ÄMARI (EEEE)
MILITARY AERODROME
VORTAC RWY 06
(CAT A;B)



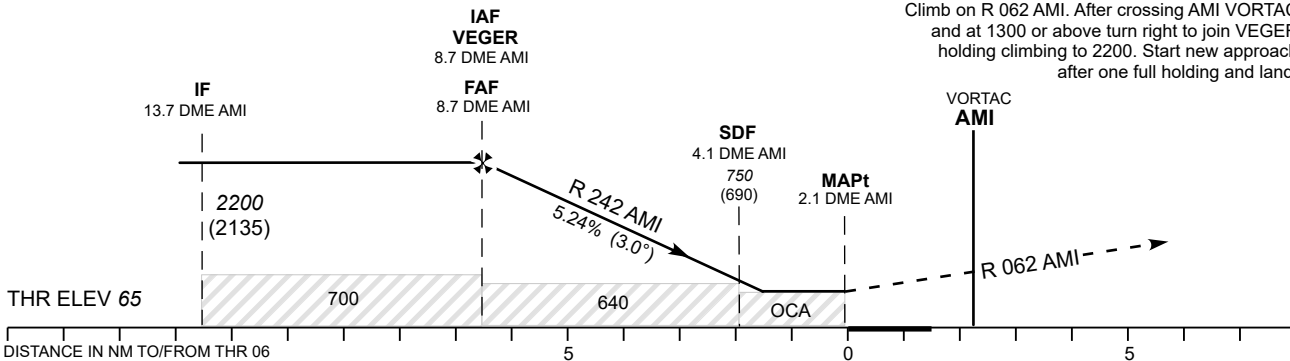
Coordinates of procedure fixes can be found in AD 2.22.

| TACAN AMI | 8 NM | 7 NM | 6 NM | 5 NM | 4 NM |
|-----------|--------|--------|--------|-------|-------|
| ALT | 1980 | 1670 | 1350 | 1030 | 720 |
| HGT | (1920) | (1610) | (1290) | (970) | (660) |

TRANSITION ALT **5000**

MISSED APPROACH
Climb on R 062 AMI. After crossing AMI VORTAC and at 1300 or above turn right heading 160 climbing to 2200. Contact TALLINN RADAR CH 127.905.

COMMUNICATION FAILURE
Climb on R 062 AMI. After crossing AMI VORTAC and at 1300 or above turn right to join VEGER holding climbing to 2200. Start new approach after one full holding and land.



| OCA (H) | A | B | Timing not authorized for defining the MAPt. | | | | | | |
|------------------------------|-----------|-----------|--|-----------|------|------|------|------|------|
| Straight - in Approach | 640 (580) | | | KT | 80 | 90 | 100 | 120 | 140 |
| Straight - in Approach + SDF | 430 (370) | | FAF- THR 6.6 NM | MIN : SEC | 4:57 | 4:24 | 3:58 | 3:18 | 2:50 |
| Circling | 500 (430) | 660 (590) | Rate of descent | FT / MIN | 425 | 480 | 535 | 640 | 745 |

CHANGES: Magnetic variation and bearings, EER22, EER23, EED37 and EETSA14 added, editorial.