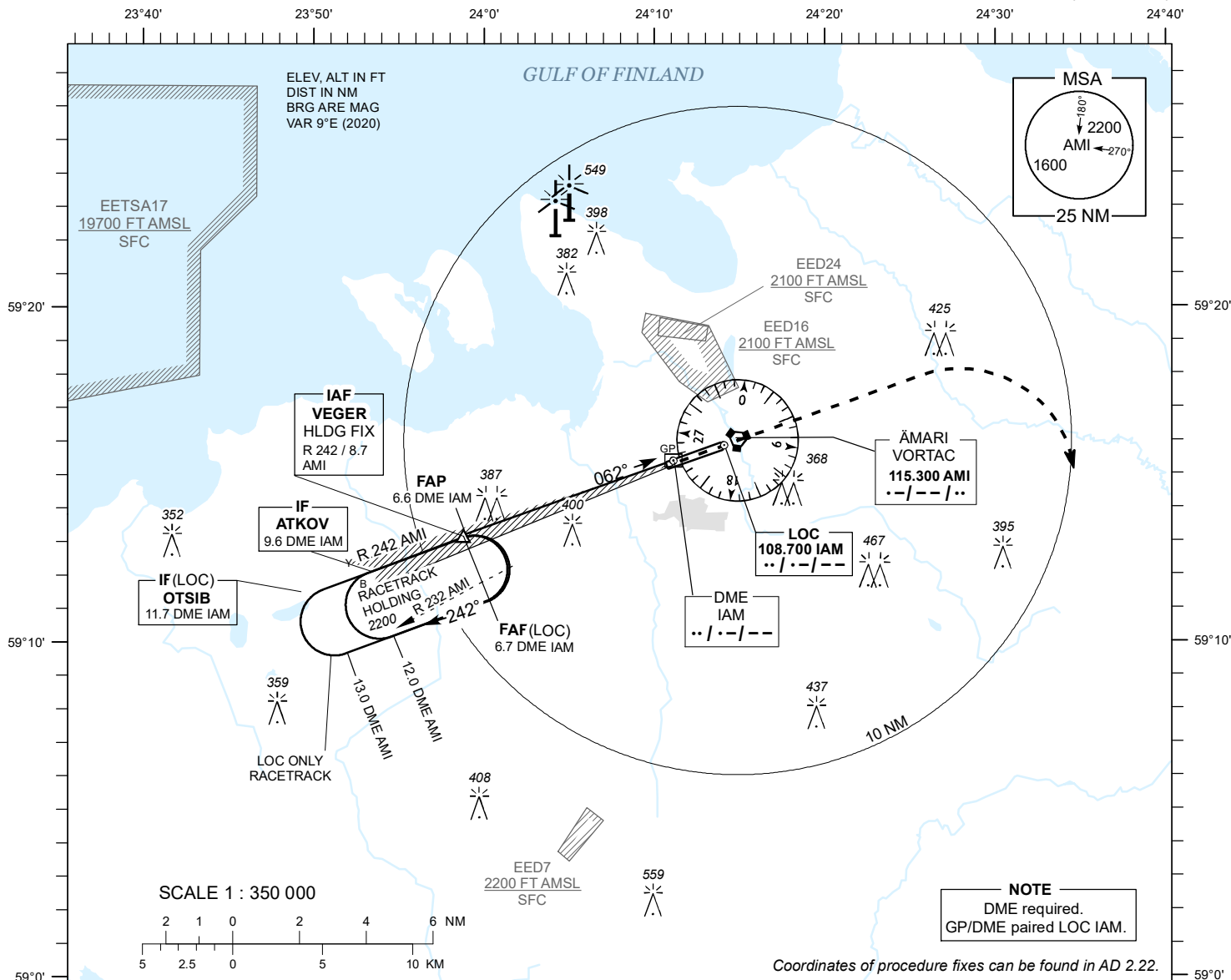


INSTRUMENT APPROACH CHART - ICAO

AD ELEV **68 FT**
HEIGHTS RELATED TO
THR RWY 06 ELEV **65 FT**

TALLINN RADAR 127.905
ÄMARI TOWER 122.100 / 257.800

ÄMARI (EEEE)
MILITARY AERODROME
ILS or LOC RWY 06
(CAT A;B)



DME IAM	6 NM	5 NM	4 NM	3 NM	2 NM	1 NM
ALT	1980	1660	1340	1020	700	390
HGT	(1920)	(1600)	(1280)	(960)	(640)	(320)

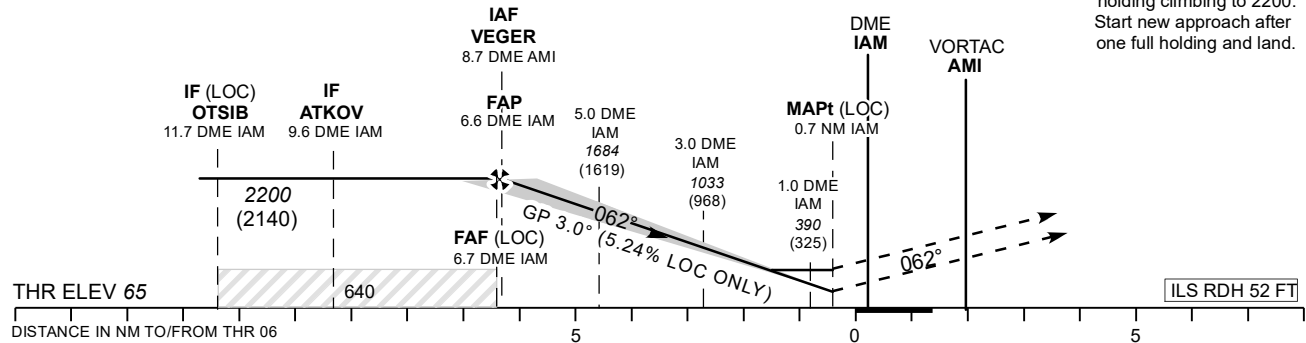
Table for LOC ONLY approach.

TRANSITION ALT **5000**

MISSED APPROACH
Climb on track 062. After crossing AMI VORTAC and at 1300 or above turn right heading 160 climbing to 2200. Contact TALLINN RADAR CH 127.905.

COMMUNICATION FAILURE
Climb on track 062. After crossing AMI VORTAC and at 1300 or above turn right to join VEGER holding climbing to 2200. Start new approach after one full holding and land.

CHANGES: correction of radials.



NO OFZ RWY 06

OCA (H)		A	B	LOC ONLY		KT	80	90	100	120	140
Straight-in Approach	CAT I	259 (194)	272 (207)	FAF- MAPt 6.0 NM	MIN : SEC	4:30	4:00	3:36	3:00	2:34	
	LOC ONLY	640 (580)									
Circling		500 (430)	660 (590)	Rate of descent	FT / MIN	425	480	535	640	745	