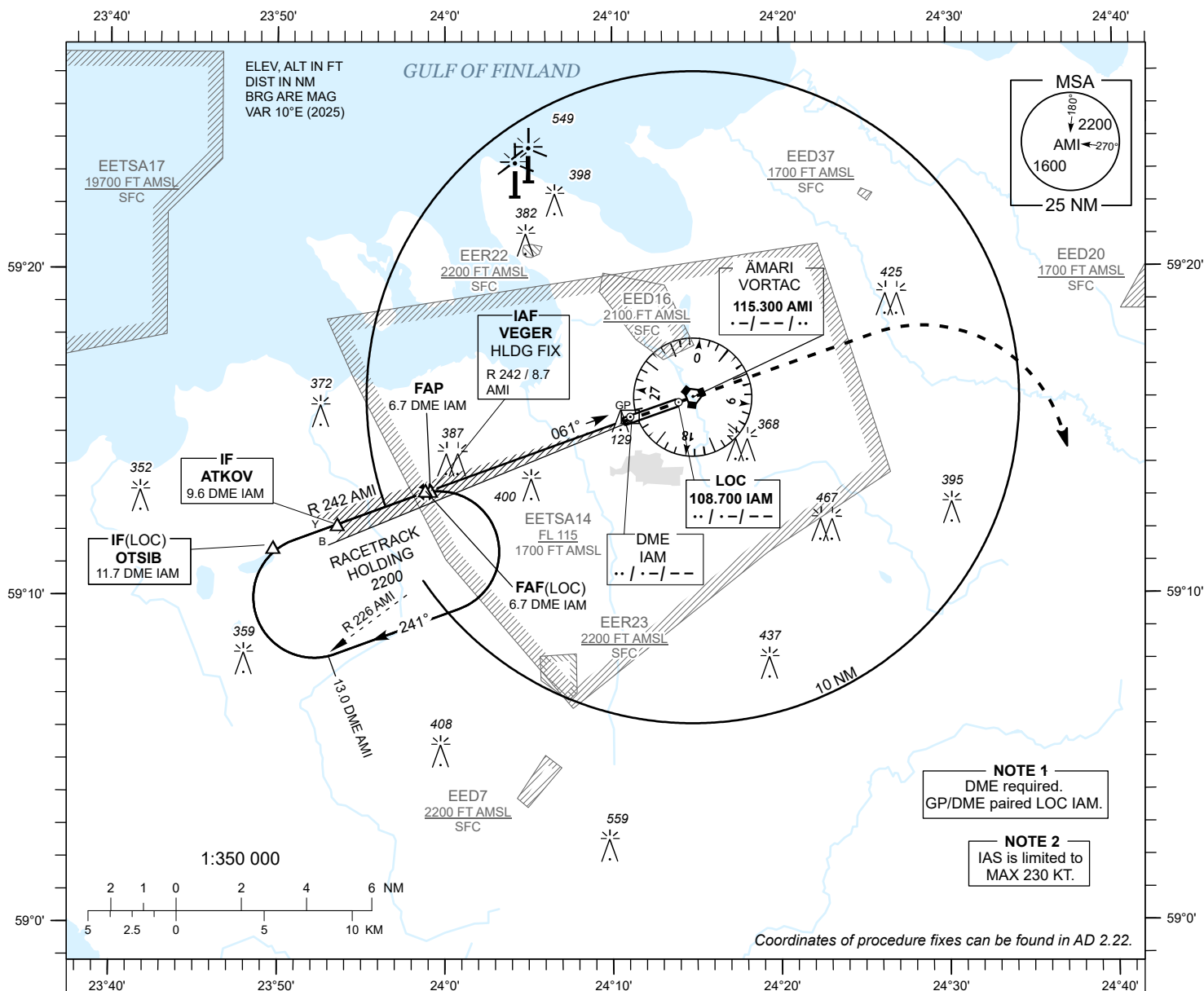


**INSTRUMENT
APPROACH
CHART - ICAO**

AD ELEV **68 FT**
HEIGHTS RELATED TO
THR RWY 06 ELEV **65 FT**

TALLINN RADAR 127.905
ÄMARI TOWER 122.100 / 257.800

**ÄMARI (EEEE)
MILITARY AERODROME**
ILS or LOC RWY 06
(CAT C;D;E)



DME IAM	6 NM	5 NM	4 NM	3 NM	2 NM	1 NM
ALT	1980	1660	1340	1020	700	390
HGT	(1920)	(1600)	(1280)	(960)	(640)	(320)

Table for LOC ONLY approach.

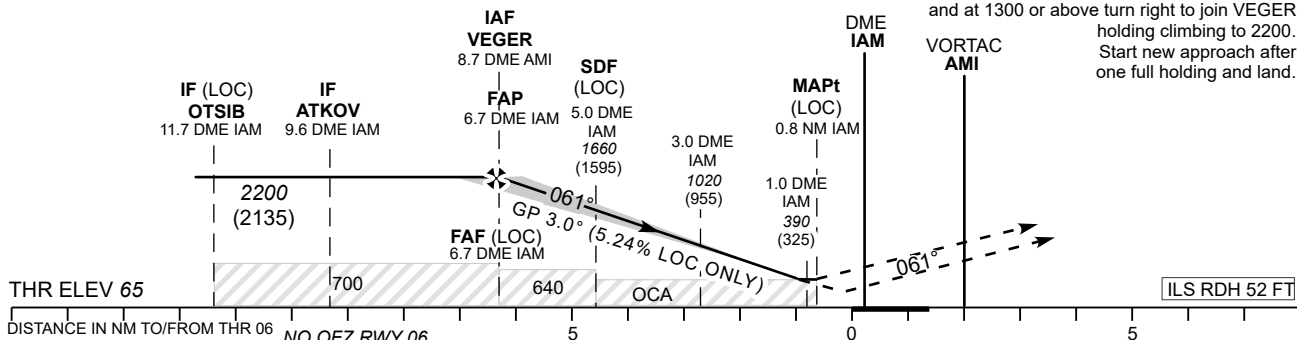
TRANSITION ALT 5000

MISSED APPROACH

Climb on track 061. After crossing AMI VORTAC and at 1300 or above turn right heading 160 climbing to 2200. Contact TALLINN RADAR CH 127.905.

COMMUNICATION FAILURE

Climb on track 061. After crossing AMI VORTAC and at 1300 or above turn right to join VEGER holding climbing to 2200. Start new approach after one full holding and land.



OCA (H)				Timing not authorized for defining the MAPt.							
				LOC ONLY	KT	100	120	140	160	180	200
CAT I				295 (230)	305 (240)	324 (259)					
LOC ONLY				640 (580)							
LOC ONLY + SDF				410 (350)							
Circling				800 (730)	970 (900)						
				Rate of descent	FT / MIN	535	640	745	850	960	1065

CHANGES: Magnetic variation and bearings, EER22, EER23, EED37 and EETSA14 added, editorial.