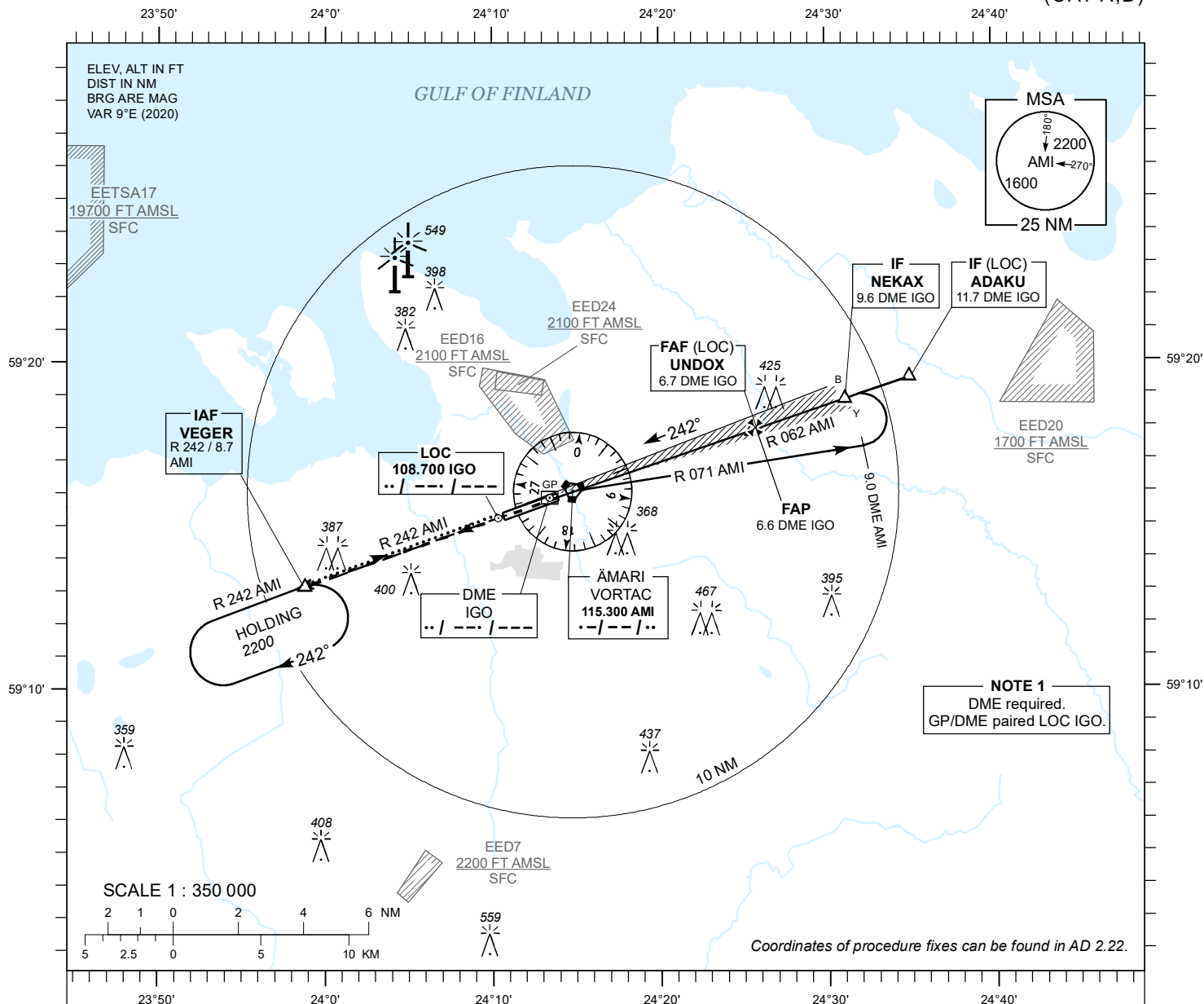


# INSTRUMENT APPROACH CHART - ICAO

AD ELEV 68 FT  
HEIGHTS RELATED TO  
THR RWY 24 ELEV 60 FT

TALLINN RADAR 127.905  
ÄMARI TOWER 122.100 / 257.800

## ÄMARI (EEEE) MILITARY AERODROME ILS or LOC RWY 24 (CAT A;B)



### MISSED APPROACH

Climb on track 242 to 2200 and expect radar vectors. Contact TALLINN RADAR CH 127.905.

### COMMUNICATION FAILURE

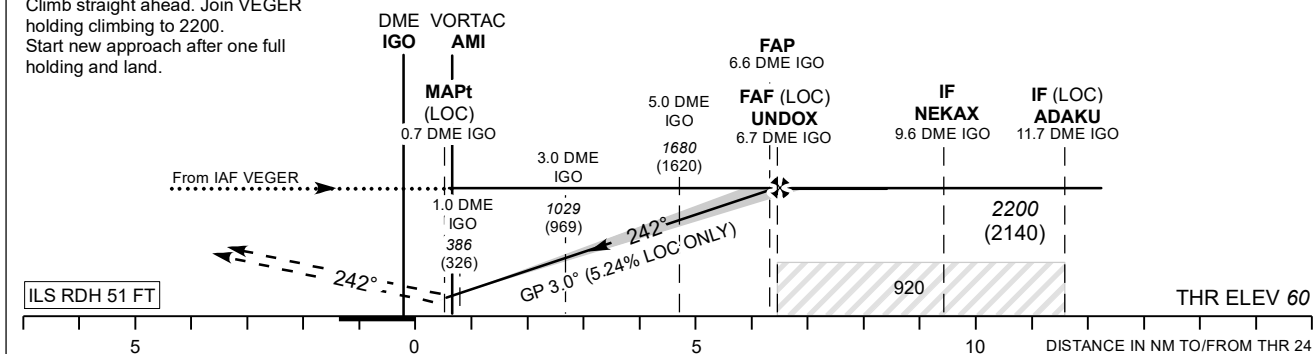
Climb straight ahead. Join VEGER holding climbing to 2200. Start new approach after one full holding and land.

TRANSITION ALT 5000

DME IGO	1 NM	2 NM	3 NM	4 NM	5 NM	6 NM
ALT	390	700	1020	1340	1660	1980
HGT	(330)	(650)	(960)	(1280)	(1600)	(1920)

Table for LOC ONLY approach.

CHANGES: correction of radials.



NO OFZ RWY 24

Timing not authorized for defining the MAPt.

OCA (H)		A	B	LOC ONLY	KT	80	90	100	120	140
Straight-in Approach	CAT I	298 (238)	310 (250)	FAF- MAPt 6.0 NM	MIN : SEC	4:30	4:00	3:36	3:00	2:34
	LOC ONLY	380 (320)								
Circling		500 (430)	660 (590)	Rate of descent	FT / MIN	425	480	535	640	745