

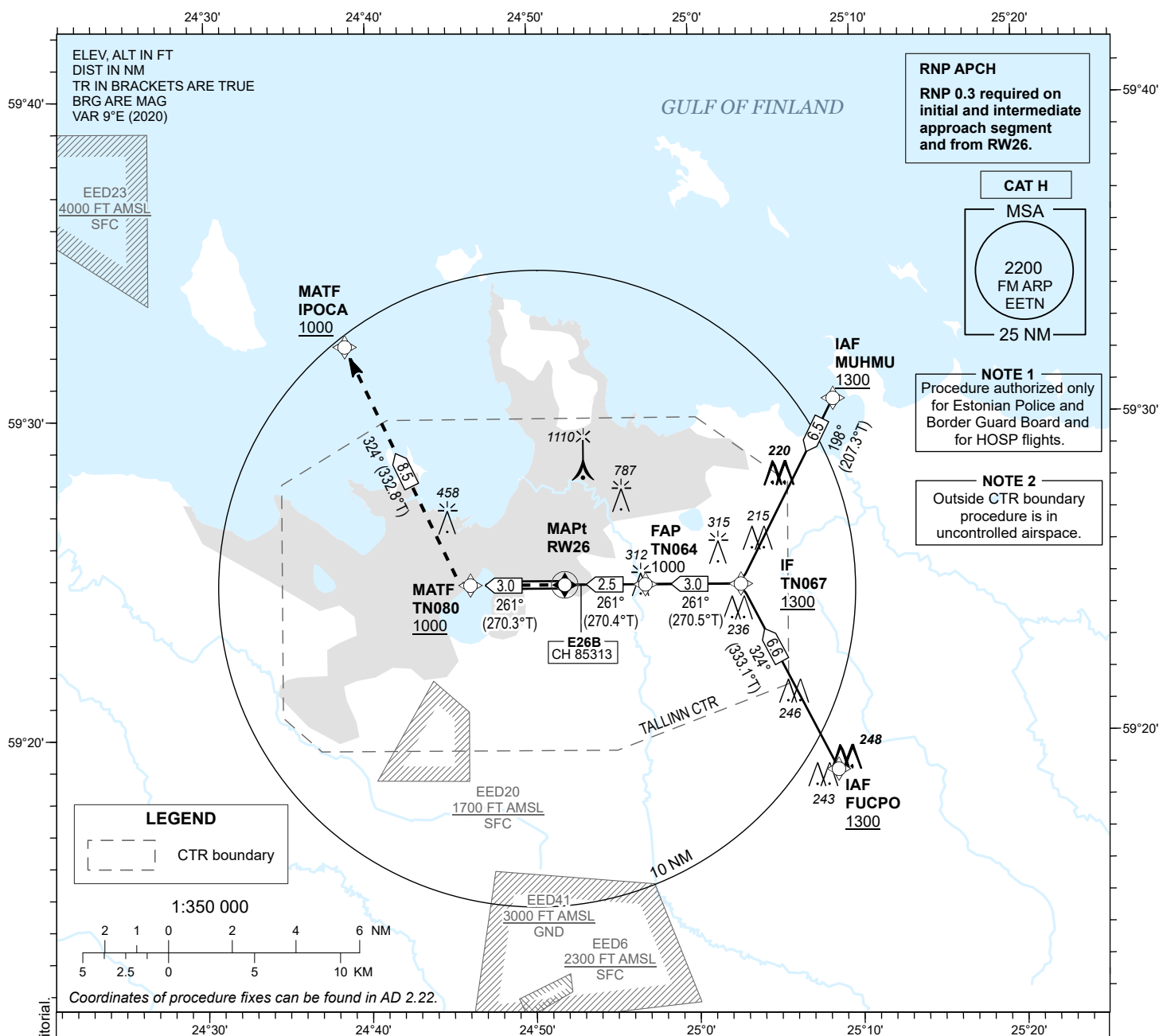
**INSTRUMENT  
APPROACH  
CHART - ICAO**

**EGNOS  
CH 85313  
E26B**

**AD ELEV 135 FT  
HEIGHTS RELATED TO  
THR RWY 26 ELEV 135 FT**

**RADAR 127.905  
TOWER 135.905  
ATIS 124.880 / TEL: +372 625 8210**

**LENNART MERI  
TALLINN (EETN)  
RNP H RWY 26  
(CAT H)**



**MISSED APPROACH**

Climb to TN080 reaching 1000 FT, turn right to IPOCA and remain TWR CH 135.905.

**RADIO FAILURE**

After reaching IPOCA turn right and start new RNP APCH procedure at IAF MUHMU.

