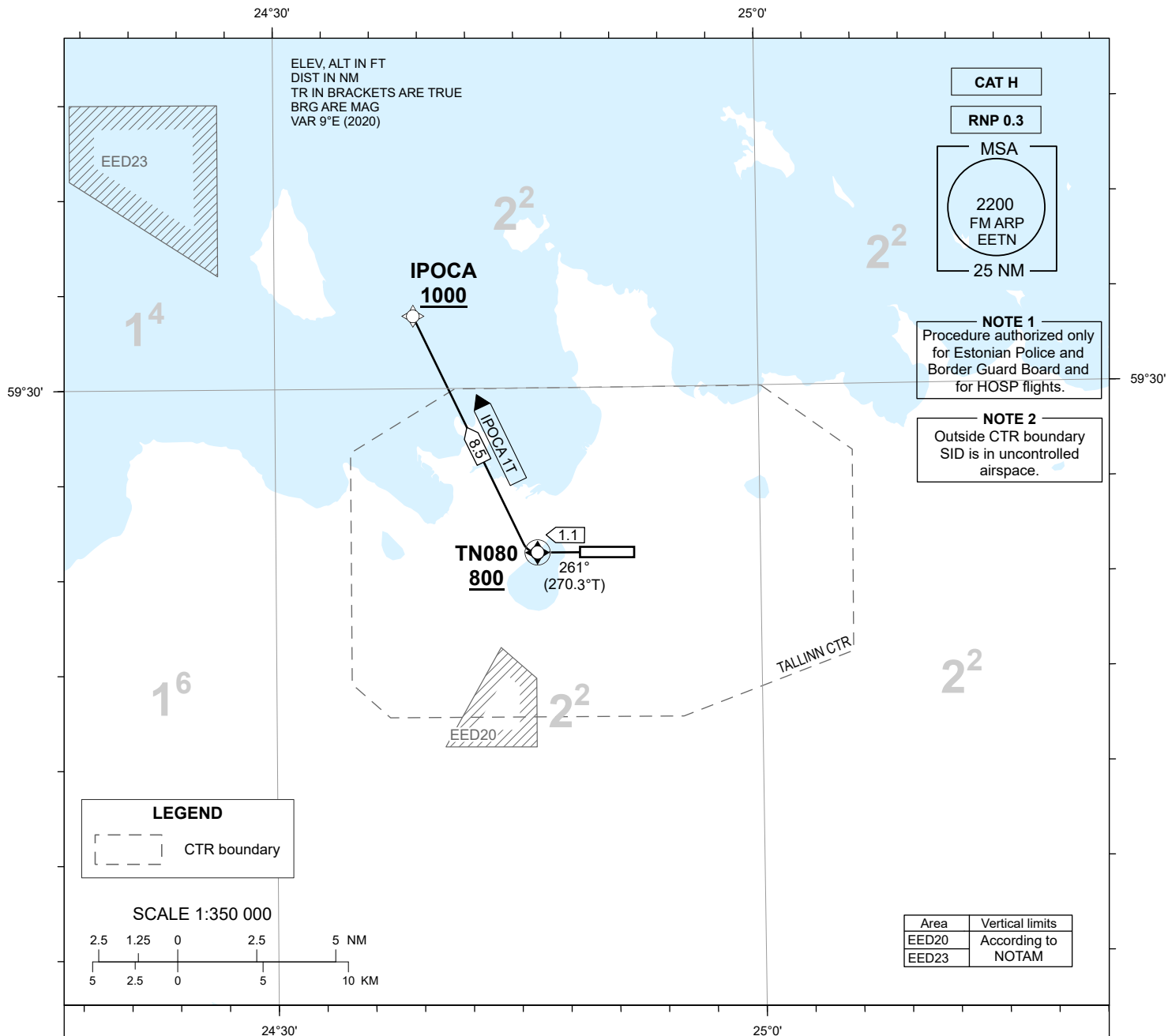


STANDARD DEPARTURE CHART  
INSTRUMENT (SID) - ICAO

TRANSITION ALTITUDE	TOWER 135.905
5000	RADAR 127.905
	ATIS 124.880 / TEL: +372 625 8210

LENNART MERI  
TALLINN (EETN)

RNP RWY 26  
(CAT H)  
IPOCA 1T



NAV SPECIFICATION

RNP 0.3 CAPABILITY REQUIRED. OTHERWISE INFORM ATC.

EN-ROUTE CLEARANCE

CONTACT TALLINN TWR ON CH 135.905 NOT EARLIER THAN 10 MINUTES PRIOR TO EOBT OR ESTIMATED ENGINE START-UP, ADVISE CALL SIGN, STAND/GATE NUMBER AND IF NOT ABLE TO FOLLOW RNP SID.

CODING TABLES AND WPT LIST: REF AD 2.22.

SQUAWK

SQUAWK THE ASSIGNED SSR-CODE IMMEDIATELY PRIOR PUSH-BACK OR TAXI.

INITIAL CLIMB

MNM CLIMB GRADIENT 9,8% (600 FT/NM) UP TO 800 FT MSL. AIRCRAFT UNABLE TO COMPLY SHALL INFORM ATC.

RADIO CONTACT

AFTER TAKE-OFF REMAIN TALLINN TOWER 135.905.

CHANGES: Chart Identification.