

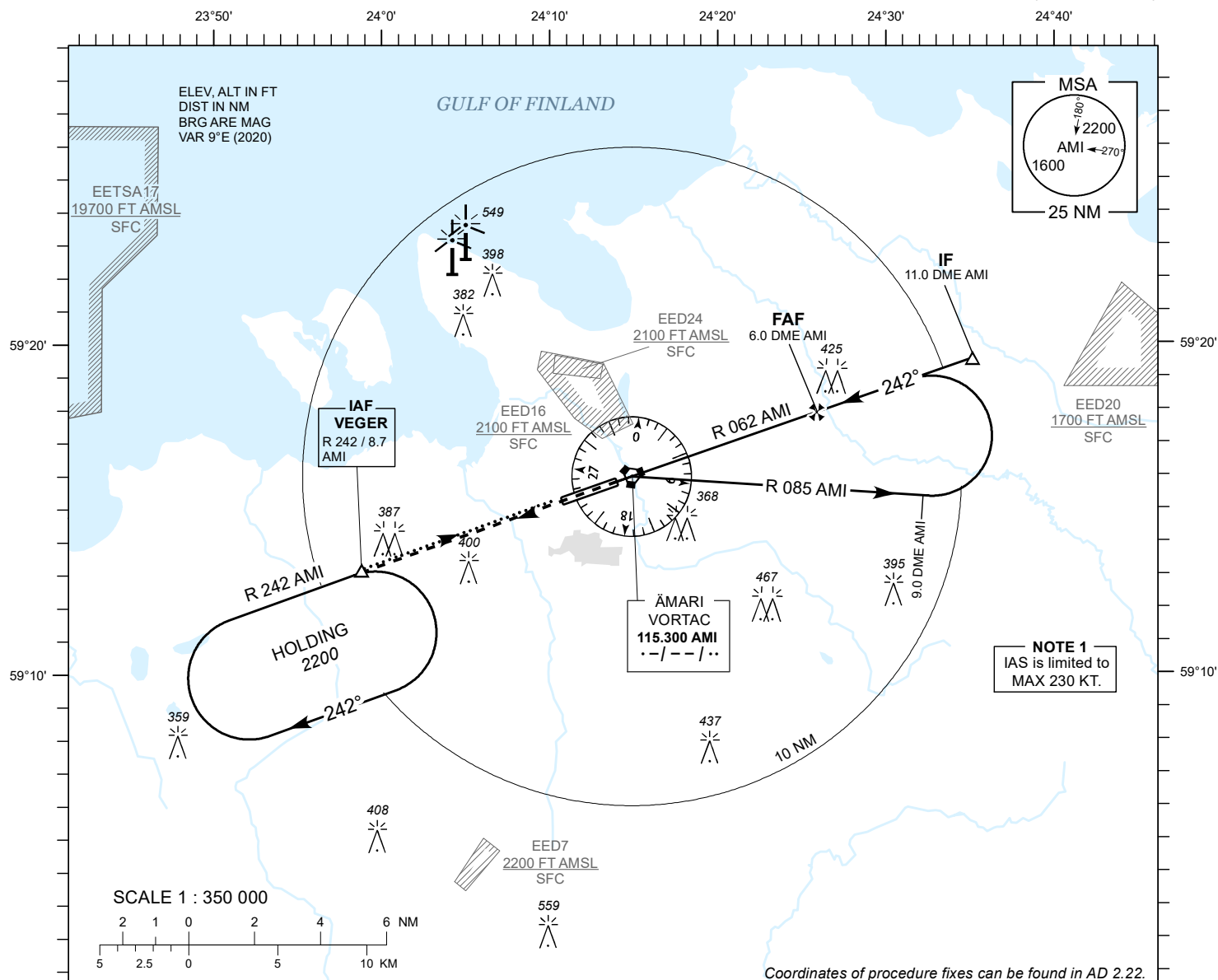
# INSTRUMENT APPROACH CHART - ICAO

AD ELEV 68 FT  
HEIGHTS RELATED TO  
THR RWY 24 ELEV 60 FT

TALLINN RADAR 127.905  
ÄMARI TOWER 122.100 / 257.800

# ÄMARI (EEEE) MILITARY AERODROME

VORTAC RWY 24  
(CAT C;D;E)



## MISSED APPROACH

Climb on R 242 AMI to 2200 and expect radar vectors. Contact TALLINN RADAR CH 127.905.

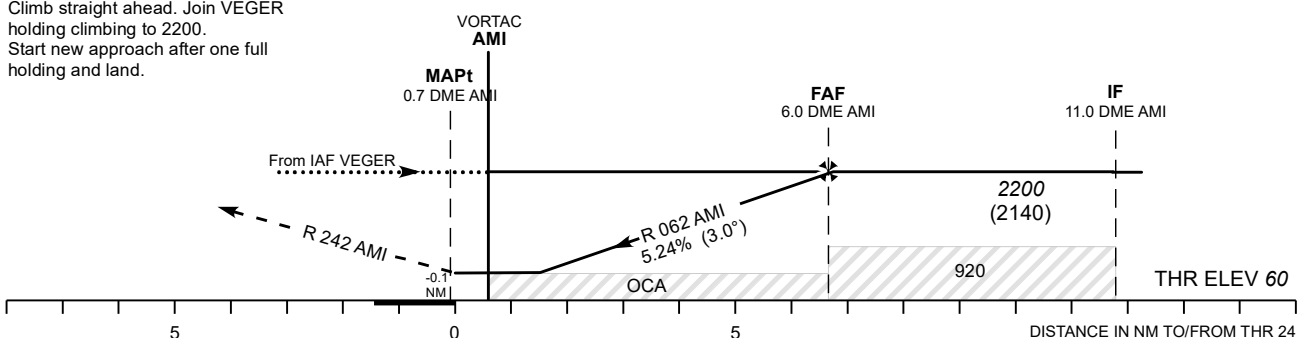
## COMMUNICATION FAILURE

Climb straight ahead. Join VEGER holding climbing to 2200. Start new approach after one full holding and land.

TRANSITION ALT 5000

TACAN AMI	2 NM	3 NM	4 NM	5 NM
ALT	970	1290	1540	1920
HGT	(910)	(1230)	(1480)	(1860)

CHANGES: correction of radials.



Timing not authorized for defining the MAPt.

OCA (H)	C	D	E		KT	100	120	140	160	180	200	220
Straight - in - Approach	450 (390)			FAF- MAPt 6.7 NM	MIN : SEC	4:02	3:21	2:52	2:31	2:14	2:01	1:50
Circling	800 (730)		970 (900)	Rate of descent	FT / MIN	535	640	745	845	960	1065	1170