

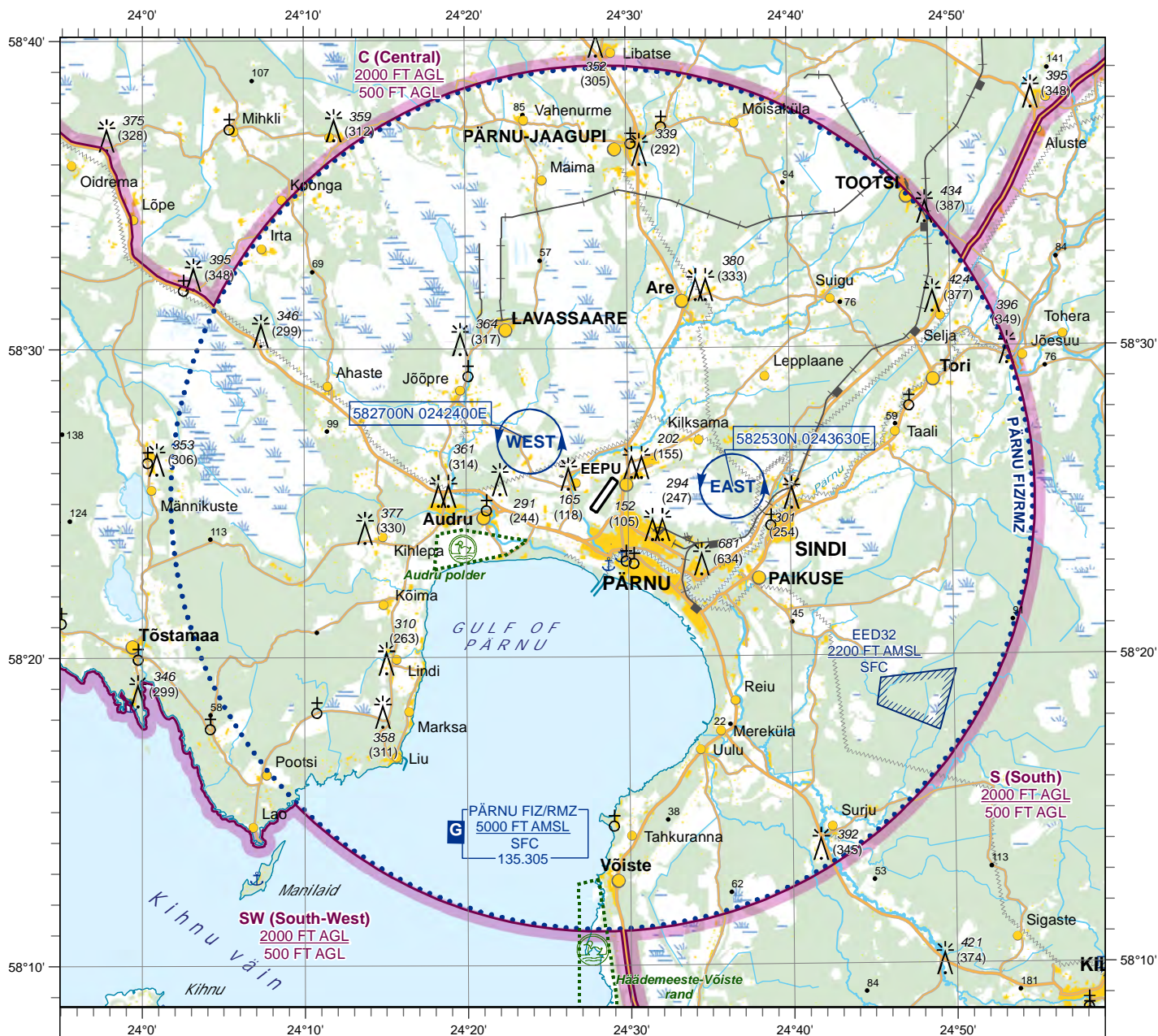
**VISUAL  
APPROACH  
CHART - ICAO**

58°25'08''N  
024°28'22''E

ELEV 47 FT  
HEIGHTS RELATED  
TO AD ELEV

INFORMATION 135.305

**PÄRNU**



**LEGEND**



Holding

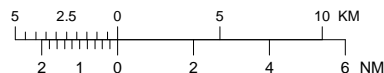


Sensitive fauna area



LFA (Low level flying area)

SCALE 1:370 000



ALT and ELEV in FT

**QFE DATA**

THR RWY 03 29 FT  
THR RWY 21 47 FT

Topography © Estonian Land Board

CHANGES: call sign, airspace type.

24 MAR 2022 (AIRAC AMDT 03/2022)

EANS

AD 2.EEPU-VAC