

Kontakt / Contact

Address: Lennuliiklusteeninduse
Aktiaselts
Lennuinfo osakond
Kanali põik 3
Rae küla, Rae vald
10112 Harjumaa
Estonia
Tel: +372 625 8323
Faks: +372 625 8200
AFS: EETNYOYX
Email: aip@eans.ee
URL: aim.eans.ee

AIP Supplement for Estonia

AIRAC
AIP Lisa / AIP SUP
03/2017
Kehtiv alates
Effective from
02 MAR 2017
kuni / to 27 APR 2017
Avaldatud
Published on
19 JAN 2017

**Kuressaare lennuvälja ILS ja VOR
instrumentaalsete
lähenemisprotseduuride muutmine****Changes to Kuressaare Aerodrome ILS
and VOR Instrument Approach Procedures**

See peatükk täiendab järgmist AIP-i osa: AD 2 EEKE.

This section supplements the following portion of the AIP:
AD 2 EEKE.

See AIRAC AIP Lisa sisaldab Kuressaare lennuvälja ILS RWY 17, VOR RWY 17 ja VOR RWY 35 **muudetud** instrumentaalsete lähenemisprotseduuride.

This AIRAC AIP SUP contains **changed** instrument approach procedures of Kuressaare aerodrome ILS RWY 17, VOR 17 and VOR 35.

1 Periood

Alates 2. märts 2017 kuni 27. aprill 2017.

1 Period

From 02 MAR 2017 to 27 APR 2017.

Peale antud ajavahemiku lõppu avaldatakse protseduurid Eesti AIP-is.

After the given period the changed procedures shall be published in the Estonian AIP.

2 Muu

Võimalikud muudatused AIRAC AIP Lisale avaldatakse NOTAM-iga.

2 Other

Possible amendments to AIRAC AIP SUP will be published by NOTAM.

3 Lisad**3 Appendixes**

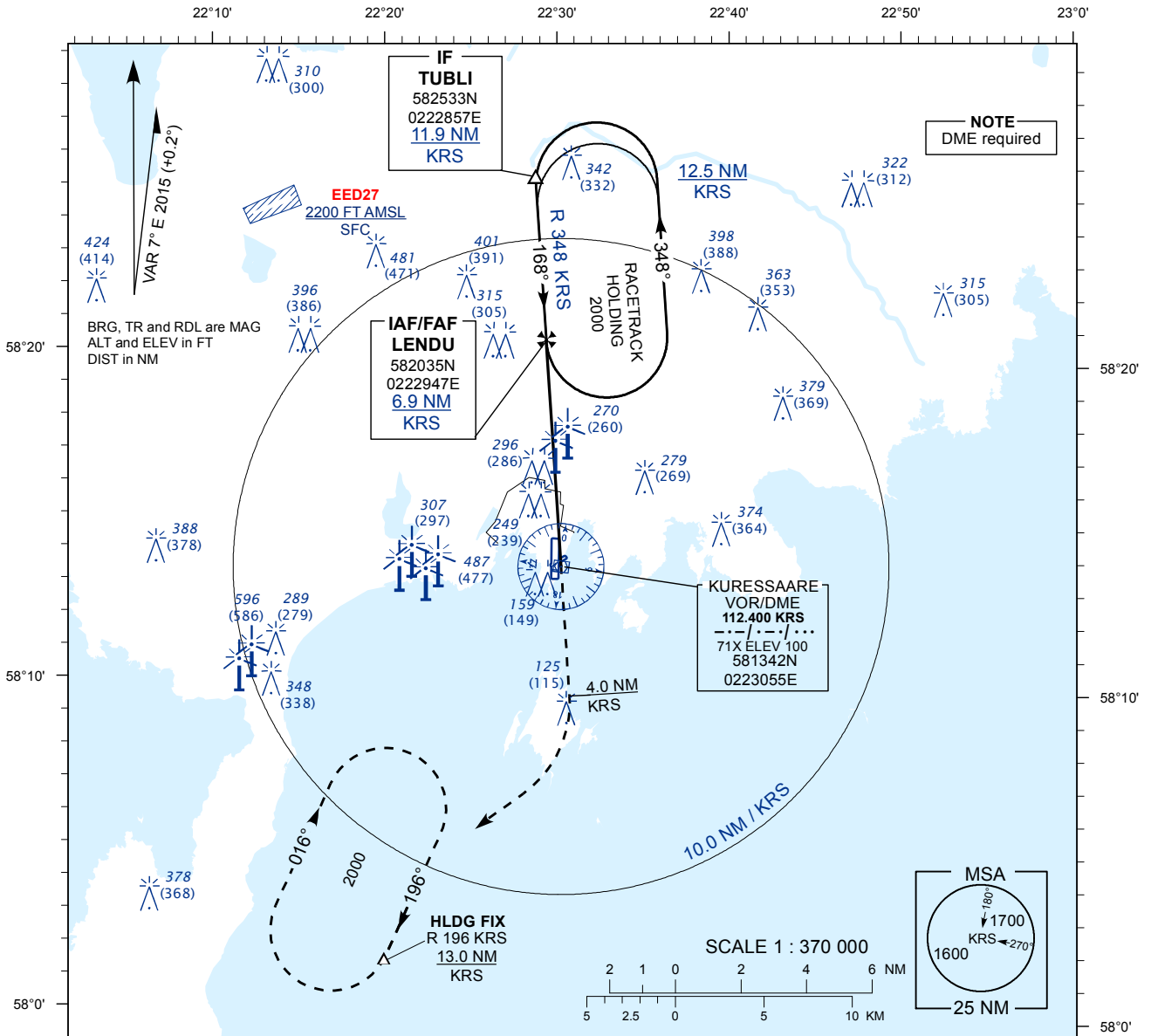
TÜHJAKS JÄETUD
PAGE INTENTIONALLY LEFT BLANK

**INSTRUMENT
APPROACH
CHART - ICAO**

**AD ELEV 14 FT
HEIGHTS RELATED
TO THR RWY 17 ELEV 10 FT**

INFORMATION 118.050

**KURESSAARE
VOR RWY 17
(Cat A;B;C)**



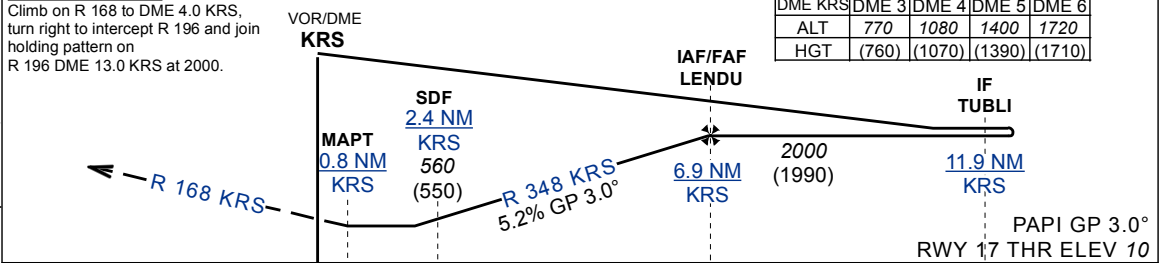
MISSED APPROACH

Climb on R 168 to DME 4.0 KRS, turn right to intercept R 196 and join holding pattern on R 196 DME 13.0 KRS at 2000.

TRANSITION ALT 5000

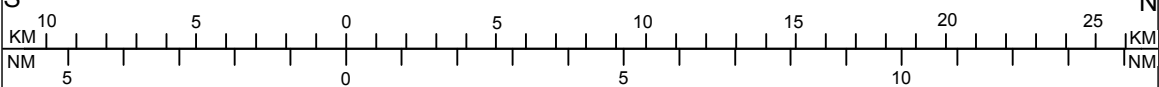
DME KRS	DME 3	DME 4	DME 5	DME 6
ALT	770	1080	1400	1720
HGT	(760)	(1070)	(1390)	(1710)

CHANGES: new missed approach procedure, editorial.



PROFILE SCALE 1 : 250 000

Timing from table not authorized for defining the MAPT.



	A	B	C								
Straight-in-Approach	560 (550)			KT	90	100	120	140	160		
Straight-in-Approach+SDF	460 (450)			FAF-MAPT 5.75 NM	MIN:SEC	3:48	3:25	2:51	2:27	2:08	
Circling (E of AD only)	610 (600)		710 (700)		Rate of descent	FT / MIN	475	530	635	740	850

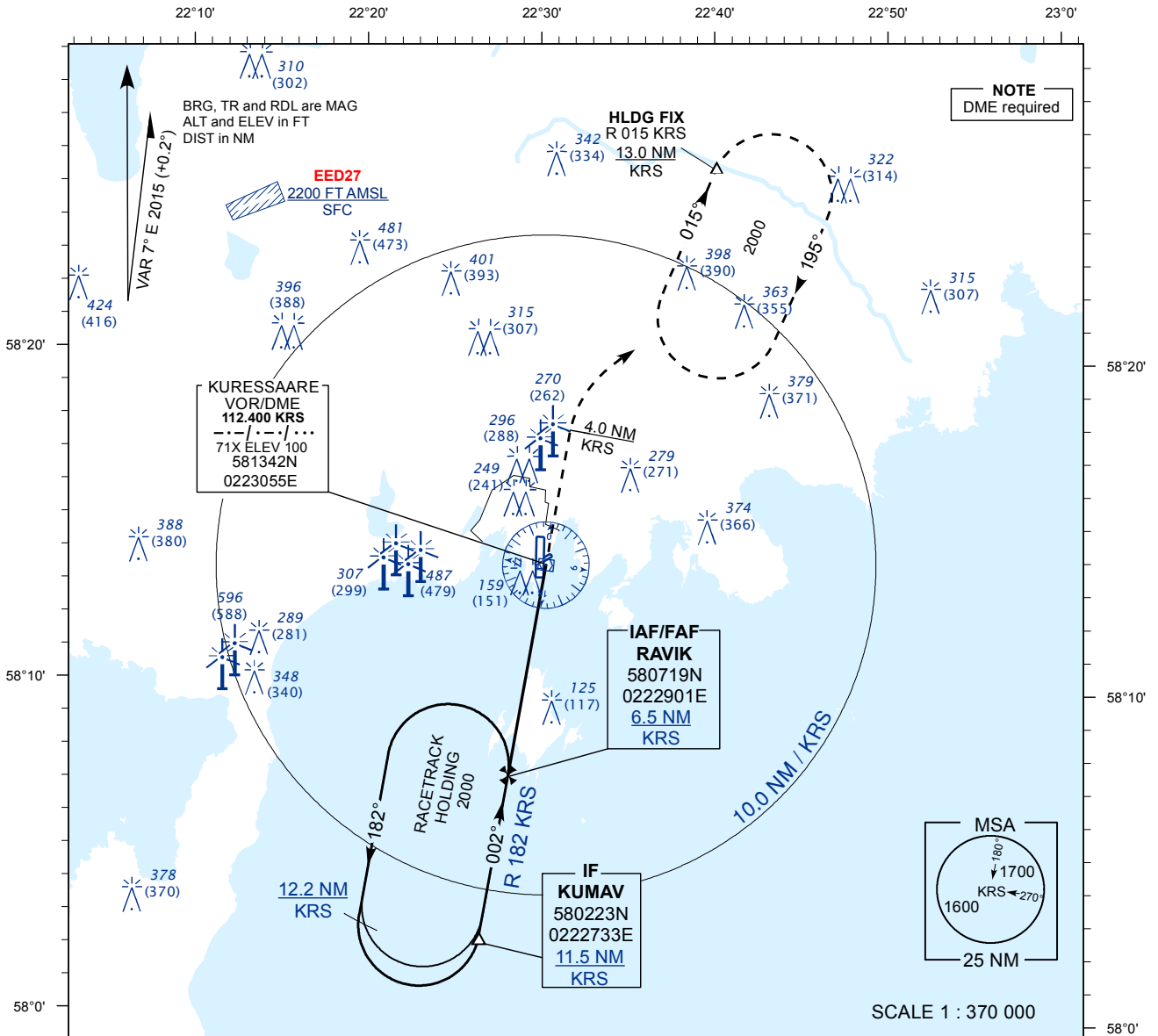
TÜHJAKS JÄETUD
PAGE INTENTIONALLY LEFT BLANK

**INSTRUMENT
APPROACH
CHART - ICAO**

**AD ELEV 14 FT
HEIGHTS RELATED
TO THR RWY 35 ELEV 8 FT**

INFORMATION 118.050

**KURESSAARE
VOR RWY 35
(Cat A;B;C)**

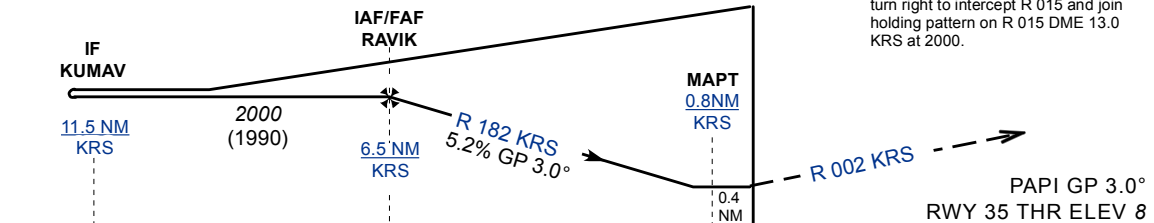


DME KRS	DME 2	DME 3	DME 4	DME 5	DME 6
ALT	590	910	1220	1540	1860
HGT	(580)	(900)	(1210)	(1530)	(1850)

TRANSITION ALT 5000

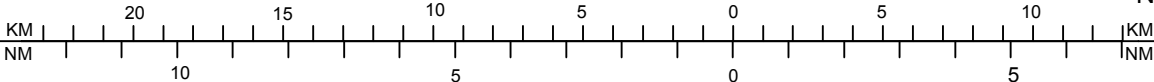
MISSED APPROACH
Climb on R 002 to DME 4.0 KRS, turn right to intercept R 015 and join holding pattern on R 015 DME 13.0 KRS at 2000.

CHANGES: new missed approach procedure, editorial.



PROFILE SCALE 1 : 250 000

Timing from table not authorized for defining the MAPT.



OCA (H)	A	B	C	KT	90	100	120	140	160
Straight-in-Approach	410 (400)	420 (410)	FAF-MAPT 5.75 NM	MIN:SEC	3:48	3:25	2:51	2:27	2:08
Circling (E of AD only)	610 (600)	710 (700)	Rate of descent	FT / MIN	475	530	635	740	850

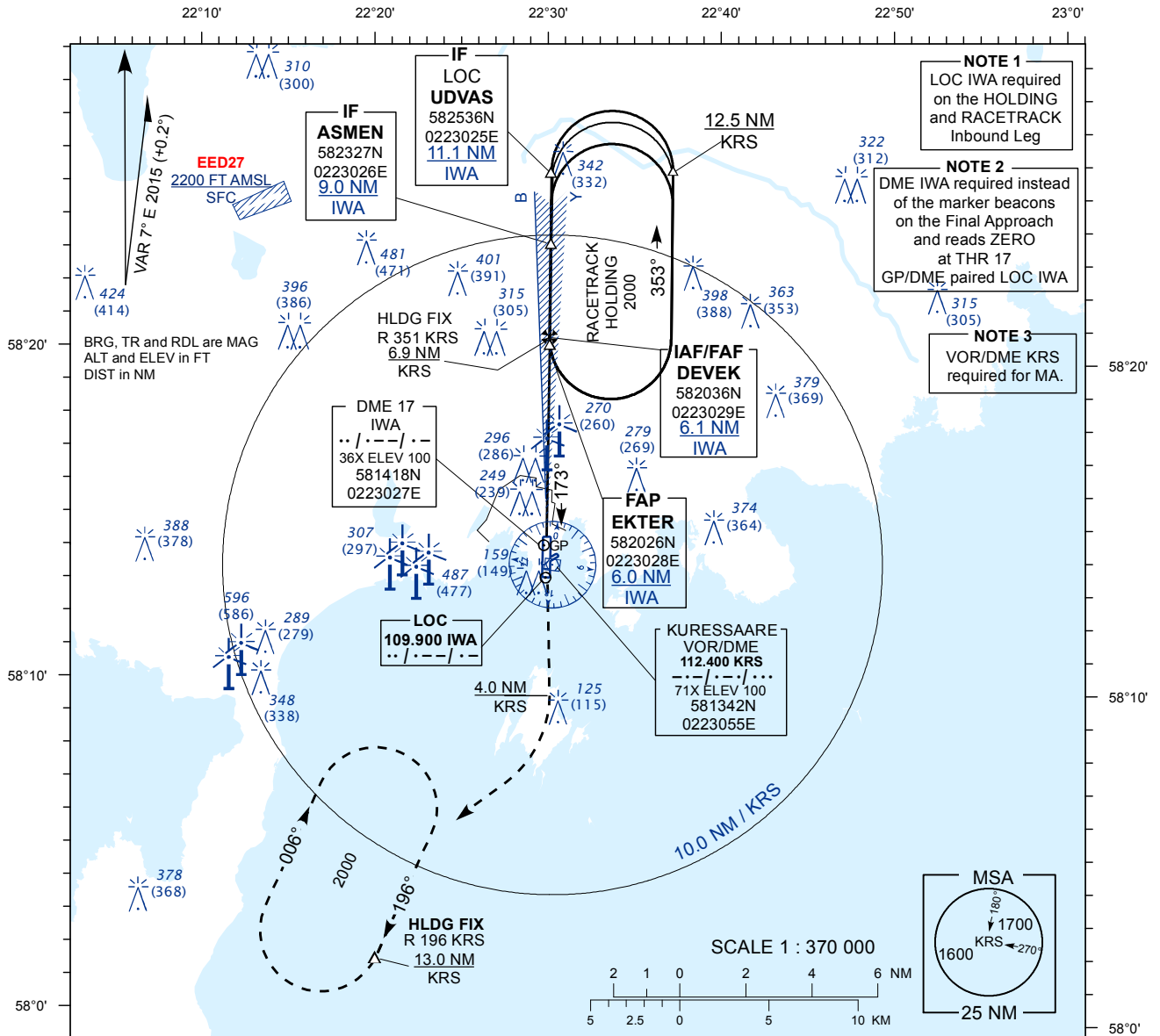
TÜHJAKS JÄETUD
PAGE INTENTIONALLY LEFT BLANK

**INSTRUMENT
APPROACH
CHART - ICAO**

**AD ELEV 14 FT
HEIGHTS RELATED
TO THR RWY 17 ELEV 10 FT**

INFORMATION 118.050

**KURESSAARE
ILS RWY 17
(Cat A;B;C)**



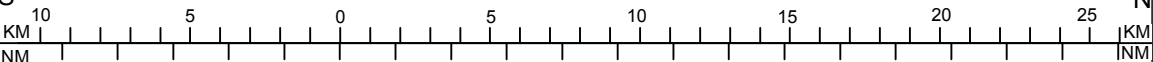
TRANSITION ALT 5000

MISSED APPROACH

Climb on track 173° to DME 4.0 KRS, turn right to intercept R 196 and join holding pattern on R 196 DME 13.0 KRS at 2000.

ILS RDH 54 FT

PROFILE SCALE 1 : 250 000



OCA (H)		A	B	C							
Straight-in Approach	CAT I	175 (165)	187 (177)	195 (185)							
	LOC ONLY	520 (510)									
	LOC ONLY+SDF	360 (350)			FAF-MAPT 5.75 NM	MIN:SEC	3:48	3:25	2:51	2:27	2:08
Rate of descent	600 (590) 610 (600) 710 (700)				Rate of descent	FT / MIN	475	530	635	740	850

CHANGES: new missed approach procedure, editorial.

TÜHJAKS JÄETUD
PAGE INTENTIONALLY LEFT BLANK